

#5654

# New Apartment in Episkopi

📍 Episkopi Lemesou, Limassol

€218,000 +VAT





# Overview

## Specifications

Bedrooms



2

Bathrooms



2

Covered



77 m<sup>2</sup>

Type

**Apartment**

Status

**Under construction**

## Description

The apartment building is only 2 floors and consists of 6 apartments in total.

This apartment consists of an open plan kitchen, dining and living area, 2 bedrooms and 2 bathrooms (1 ensuite).

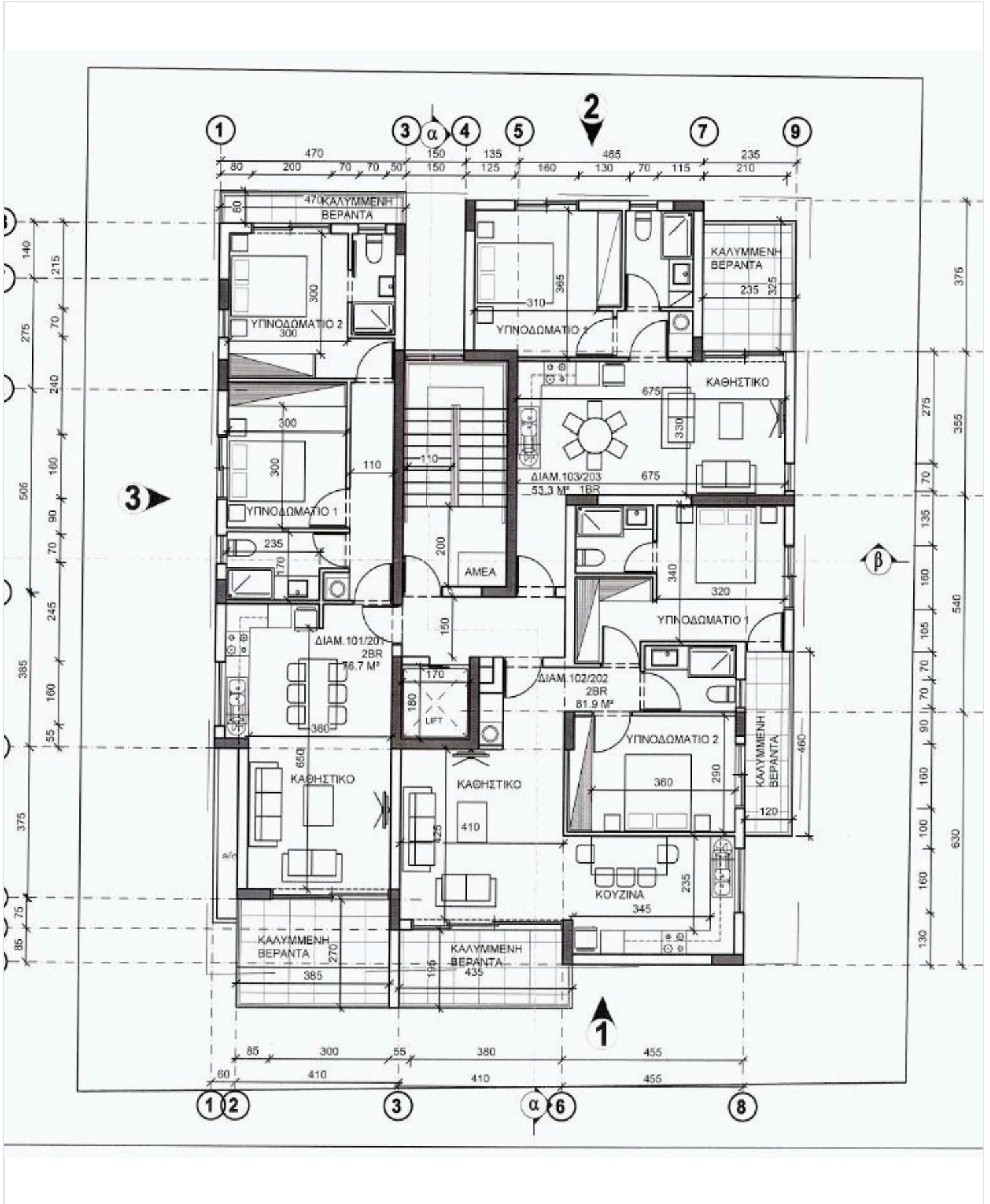
It has covered parking and storage room.

It is located in a quite residential area with easy access from/to the highway and in close proximity to all amenities.

\*Location on map is indicative.



# Floor plans



# Additional information

## Facilities

Parking, Covered

## Features

Balcony

En suite bathroom

Open plan

## Contact us



**Katerina Athini**

✉ [katerina@cyprusdomus.com](mailto:katerina@cyprusdomus.com)

