

#5663

New Penthouse For Sale in Erimi area

 Erimi, Limassol


€165,000 +VAT





Overview

Specifications

Bedrooms	Bathrooms	Covered
 1	 1	 50.52 m ²
Type	Apartment	
Status	Under construction	

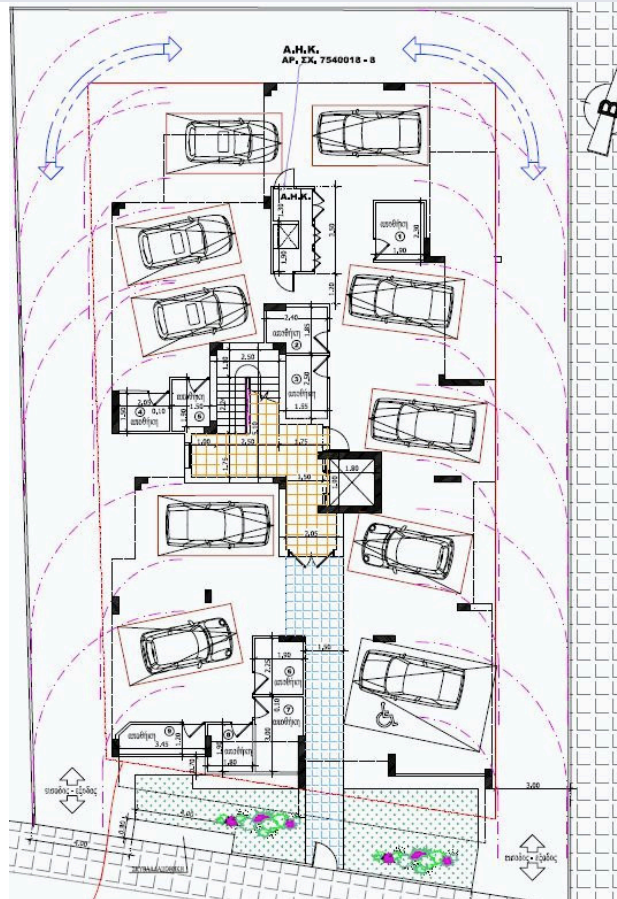
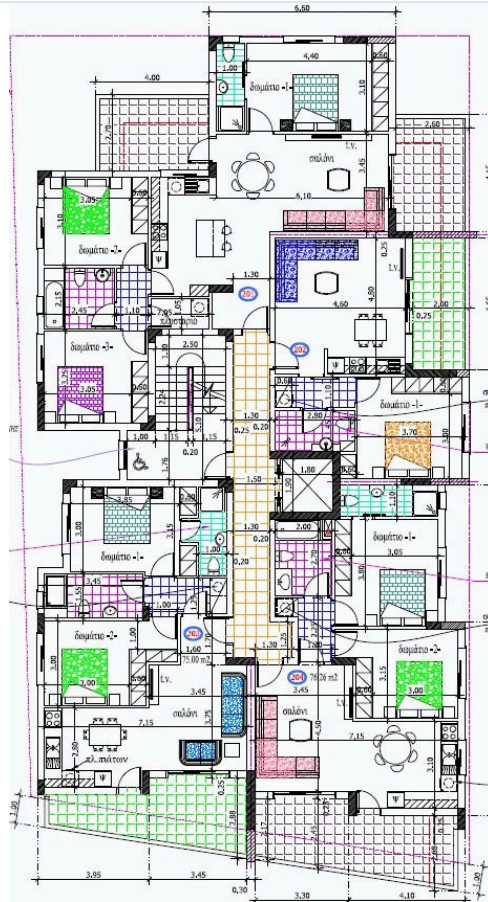
Description

The penthouse consists of an open plan kitchen, dining and living area, 1 bedroom and 1 bathroom.

It has 1 covered parking and 1 storage.

*Location on map is indicative.

Floor plans



Additional information

Facilities

Parking, Covered

Storage

Contact us



Katerina Athini

✉ katerina@cyprusdomus.com