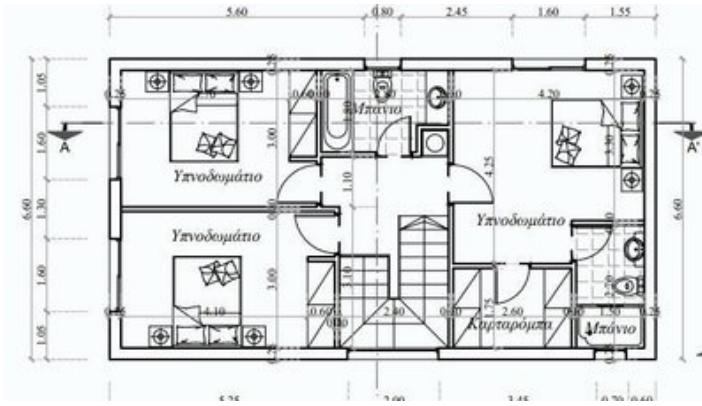


## New Detached House In Erimi Area

📍 Limassol, Erimi

#6021





<b>Price</b>	€400,000 +VAT	<b>Type</b>	House
<b>Bedrooms</b>	3	<b>Bathrooms</b>	2
<b>Covered</b>	158 m <sup>2</sup>	<b>Covered parking</b>	23 m <sup>2</sup>
<b>Plot</b>	380 m <sup>2</sup>	<b>Status</b>	Off plan
<b>Area</b>	Limassol, Erimi		

---

## Description

The house consists of an open plan kitchen, dining and living area, and 1 guest w/c on the ground floor.

The first floor includes 3 bedrooms and 2 bathrooms (1 en-suite).

\* Location on the map is indicative.

## Vassilis Papadopoulos

Manager

✉ info@cyprusdomus.com

☎ (+357) 99662023

## Facilities

Parking, Covered

---

## Features

Guest WC

En suite Bathroom

## Floor plans

