

#6283

New Commercial Office Building For Sale in Germasogeia area.

📍 Germasogeia Tourist Area, Limassol

€28,000,000 +VAT





Overview

Specifications

Covered

 **1970 m²**

Type	Commercial Building
Plot	1532 m²
Covered veranda	385 m²

Uncovered veranda	158 m²
Status	Off plan

Description

This outstanding building comprises of 9 floors of commercial office space, all of which are meticulously designed to reach the level of quality any high caliber business deserves and expects.

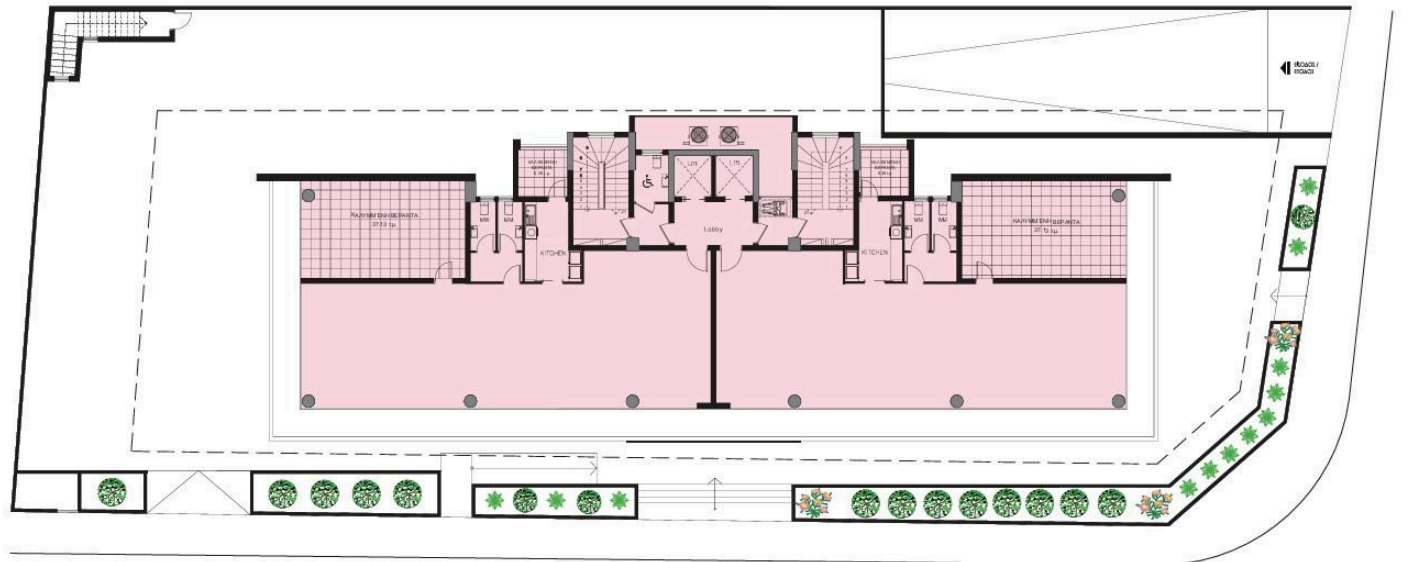
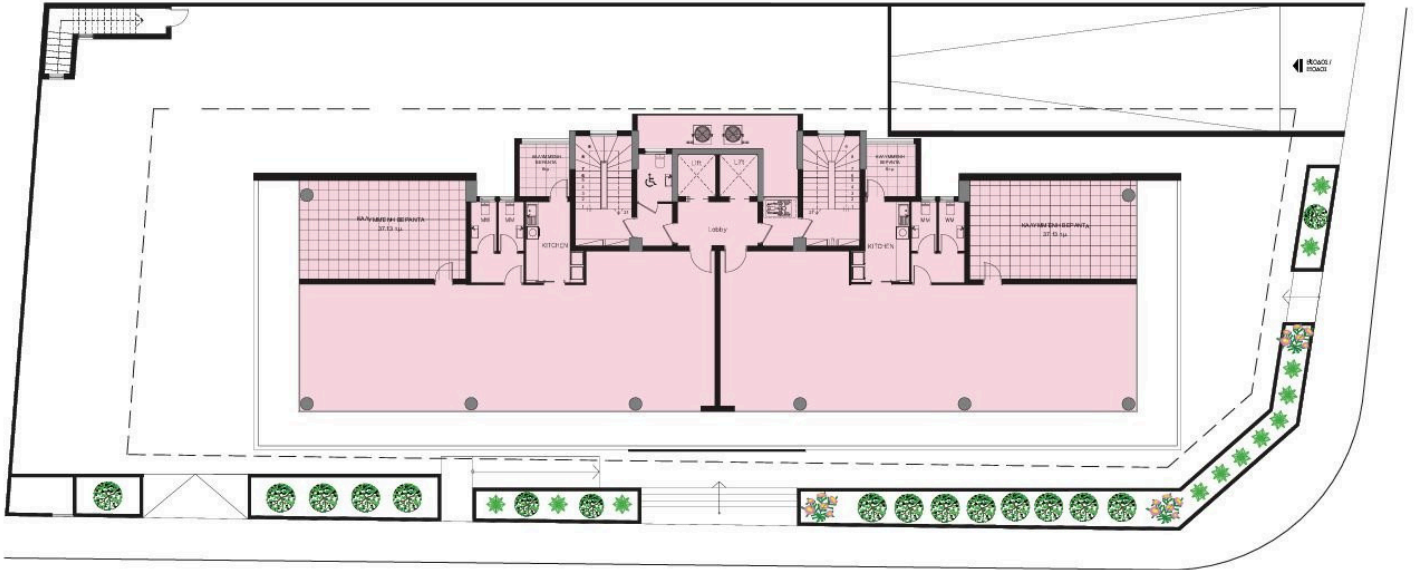
Furthermore, the building provides open spaces, giving a light and airy working environment, with floor to ceiling windows offering panoramic views across the city as well as views of the beautiful seafront of Limassol.

It offers a wealth of amenities such as a gym facility, cafeteria area, sauna and a conference room.

*Location on map is indicative.



Floor plans



Additional information

Facilities

Aircondition, Central system

Elevator

Gym

Parking, Underground

Sauna

Features

CCTV

Conference hall

Fire detector

Lobby

Raised floors

Reception

Sound insulation

Contact us



Katerina Athini

✉ katerina@cyprusdomus.com

