

#6359

3 Bedroom House for sale in Dali

📍 Dali, Nicosia

€265,000 +VAT





ΚΑΤΟΨΗ ΟΡΟΦΟΥ



Overview

Specifications

Bedrooms

 3

Bathrooms

 2

Covered

 140 m²

| | |
|---------|--------------------------|
| Type | House |
| Toilets | 3 |
| Plot | 286 m² |

| | |
|------------|---------------------------|
| Status | Under construction |
| Title deed | Yes |

Description

Discover this spacious 3-bedroom home located in the charming and family-friendly area of Dali, Nicosia. With its modern architecture and thoughtful design, this property offers an ideal combination of comfort, functionality, and energy efficiency.

Key Features:

Reinforced Concrete Structure: Built with seismic-resistant reinforced concrete for durability and safety.

Walls: External walls are 25 cm thick, using perforated bricks, while internal walls are 10 cm thick for efficient insulation.

Thermal Insulation System: 8 cm thermal facade for enhanced energy efficiency, ensuring comfort throughout the year.

Flooring: High-quality ceramic tiles with a purchase value of €20/m² + VAT, adding a modern touch to the interiors.

Bathrooms and Kitchen: Fully tiled with ceramics up to 60 cm height in the kitchen, valued at €20/m² + VAT.

Staircase: Elegant marble or granite staircase valued at €1,800 + VAT.

Balustrades: Stylish internal staircase railing installed for €85/m + VAT.

Exterior Gates: Entrance gate priced at €215 + VAT, and parking area gate at €360 + VAT, ensuring privacy and security.

Sanitary Fittings: High-quality fittings with a provision of €2,000 + VAT for bathroom fixtures.

Carpentry and Fittings:

Internal Doors: Stylish doors valued at €380 + VAT.

Kitchen: Modern cabinetry at €240/m + VAT, with countertops priced at €100/m + VAT.

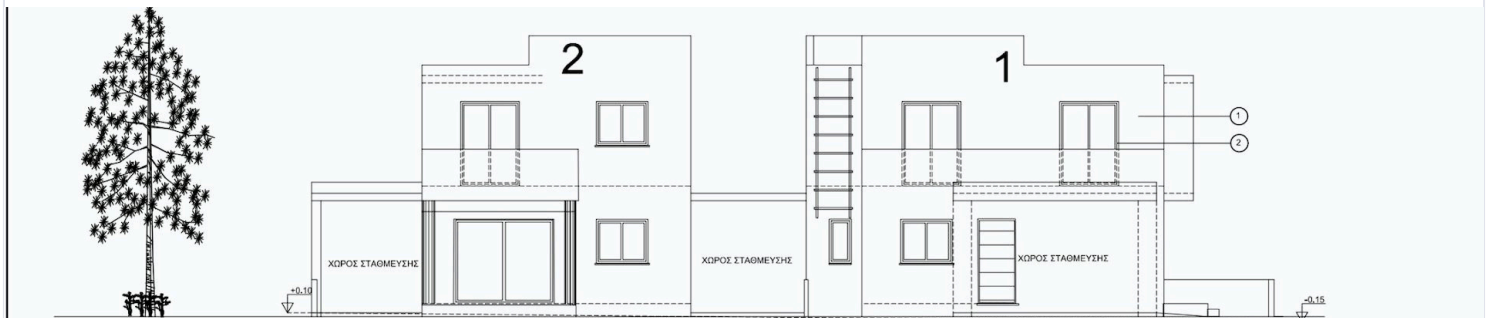
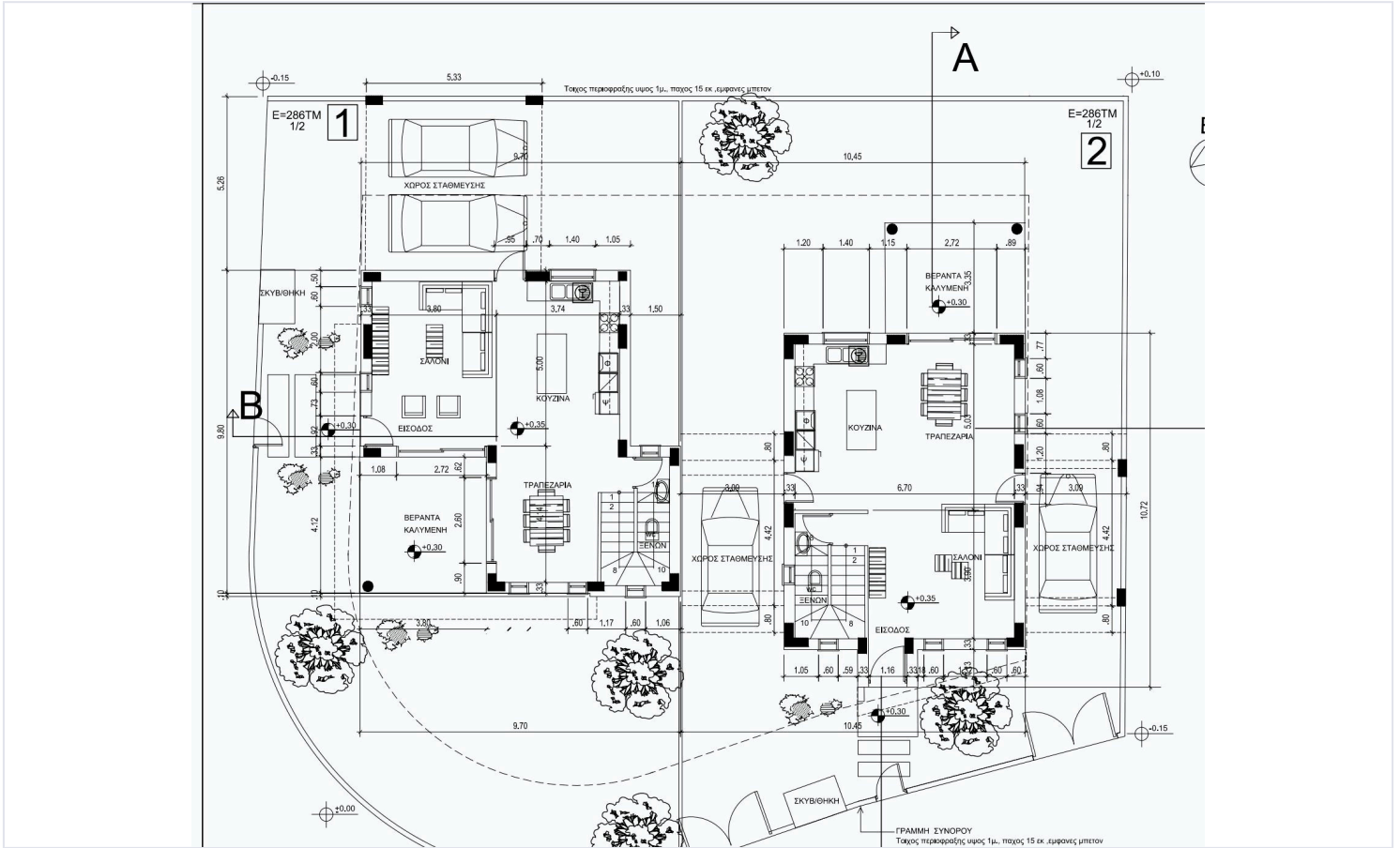
Wardrobes: Spacious wardrobes at €210/m², all crafted from high-quality melamine.

Windows and Doors:

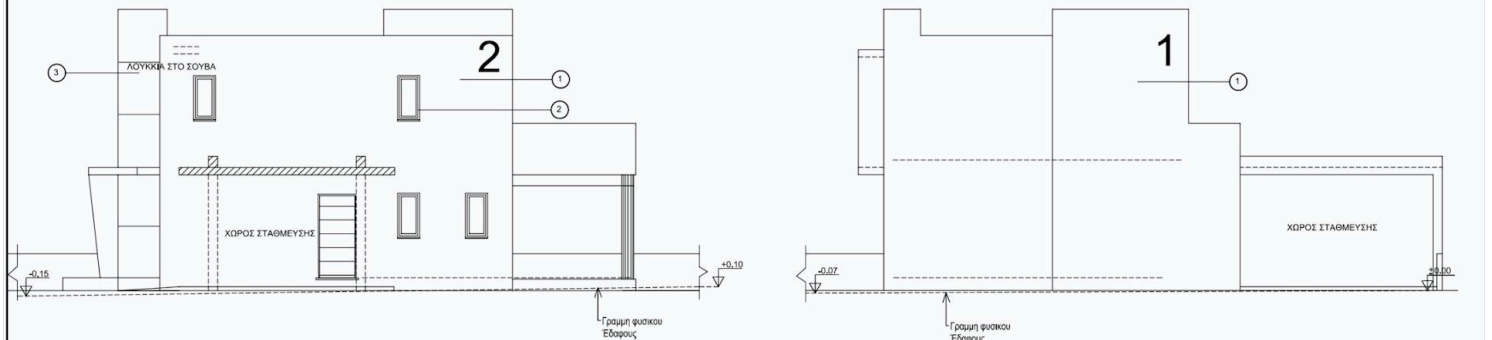
Aluminum Windows and Doors: Thermal insulated aluminum in natural color, with double glazing for energy efficiency. Opening windows and doors are from the MU 2075 series, while sliding ones use the MU 3000 series.



Floor plans



ΠΙΣΩ ΟΨΗ ΚΑΤΟΙΚΙΑ 2+1 (ΒΟΡΕΙΑ)



Additional information

Contact us



Nicolas Efthimiou

☎ (+357) 94098260

✉ nicolas@cyprusdomus.com

