

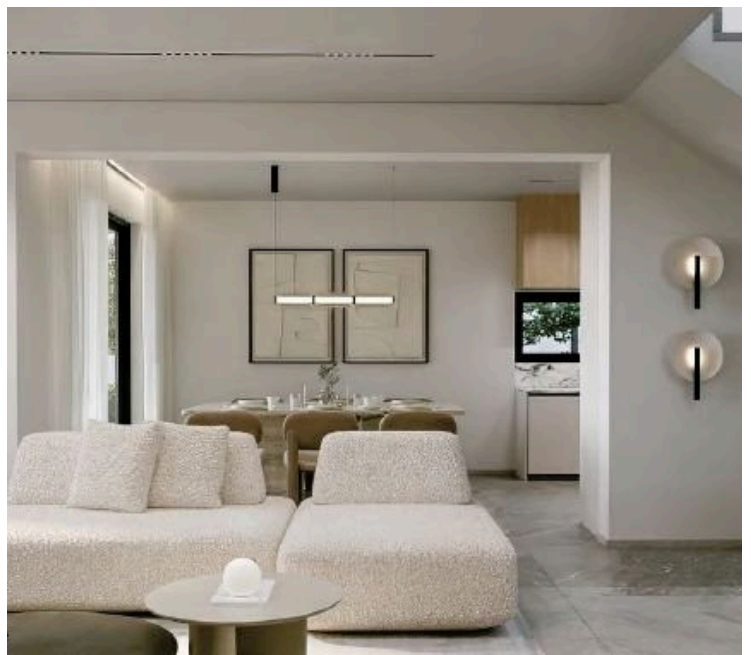
#6514

New Modern Semi-Detached Villas in Erimi Area

📍 Erimi, Limassol

€398,000 +VAT





Overview

Specifications

Bedrooms



4

Bathrooms



2

Covered



151.7 m²

Type	House	Plot	188.96 m ²
Toilets	1	Status	Off plan

Description

These modern villas offer a perfect blend of comfort, luxury, and the serene Cypriot lifestyle, with spacious living areas, private gardens, and stunning views of the surrounding landscape.

As you step into each villa, you are welcomed by a bright and airy open-plan living space. The high ceilings and expansive windows fill the area with natural light, creating a warm and inviting atmosphere.

The outdoor space features a private covered terrace for each villa, complete with an outdoor dining area and barbecue facilities private swimming pool is an optional feature available on request.

-Showing Villa B2

*Location on map is indicative,



Floor plans



Additional information

Facilities

Aircondition, Provision

Parking, Covered

Storage

Gated complex

Pool, Optional

Heating, Provision

Solar water heater

Features

Ceramic tiles

High ceilings

Double glazing

Irrigation system

Granite countertops

Pressurized water system

Contact us



Katerina Athini

[✉ katerina@cyprusdomus.com](mailto:katerina@cyprusdomus.com)

