

#6613

New Sea View Penthouses With Attic For Sale in Trachoni area

📍 Trachoni Lemesou, Limassol

€320,000 +VAT





Overview

Specifications

Bedrooms



3

Bathrooms



2

Covered

125 m²

Type

Apartment

Status

Off plan

Description

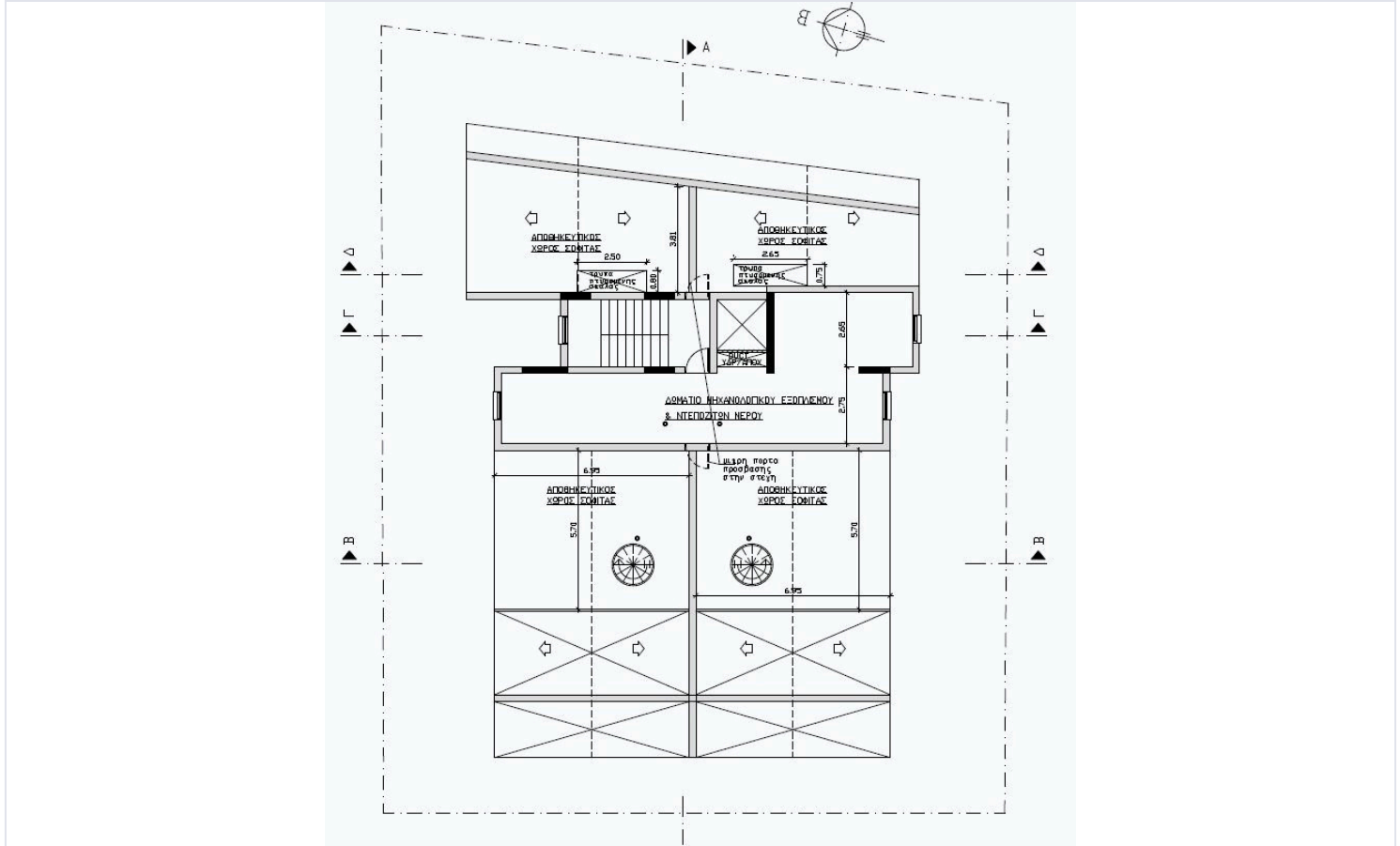
This is a unique A-shaped apartment building situated in a cul-de-sac, offering both privacy and a modern aesthetic. The building's A-frame structure stands out with its sleek design, featuring large glass windows that allow natural light to flood the interiors.

The penthouses attic, is located just above the main living space, accessible via a stylish spiral staircase. The attic could serve multiple purposes, depending on the residents needs.

Across the street is a green area, giving residents a peaceful living.

*Location on map is indicative





Additional information

Facilities

Parking, Covered

Solar water heater

Storage

Features

Attic

Cul de sac

Elevated

High ceilings

Modern design

Near amenities

Next to green area

Open plan

Sea view

Contact us



Katerina Athini

✉ katerina@cyprusdomus.com

