

#6622

# New Houses For Sale in Palodeia area.

📍 Palodeia, Limassol

€410,000 +VAT





# Overview

## Specifications

Bedrooms

 3

Bathrooms

 2

Covered

 136.4 m<sup>2</sup>

Type **House**

Toilets **1**

Plot **208 m<sup>2</sup>**

Status **Under construction**

## Description

This residential complex consists of four detached two-floor residences, all three-bedroom situated in the northern suburbs of Limassol, in Palodeia area.

The houses are build on a plot on a hill with a panoramic view, opening to a large expanse of nature.

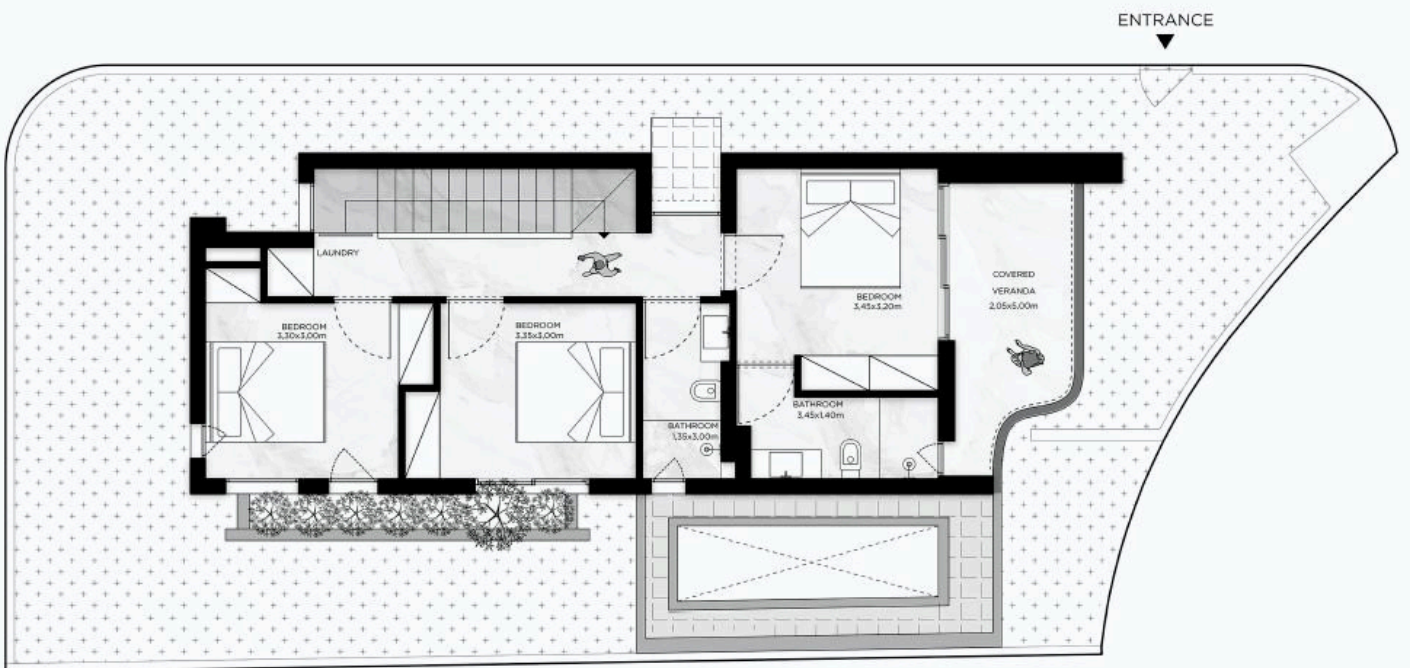
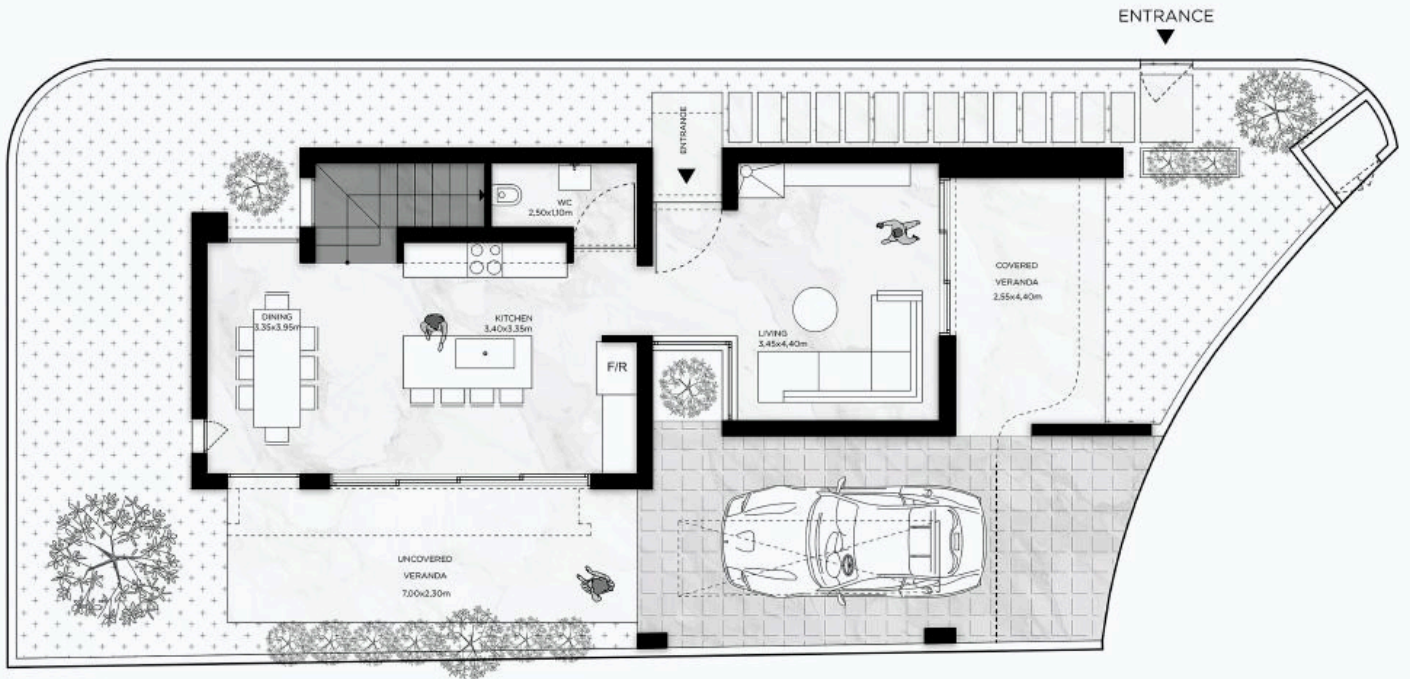
The house on the ground floor consists of an open plan kitchen, dining and living area, and 1 guest w/c.

On the first floor you will find a laundry room, 3 bedrooms and 2 bathrooms (1 ensuite).

\*Location on map is indicative.



# Floor plans



# Additional information

## Facilities

Aircondition, Provision

Heating, Provision

Parking, Covered

Solar water heater

## Features

Ceramic tiles

Double glazing

Granite countertops

Laundry room

Pressurized water system

## Contact us



**Katerina Athini**

✉ [katerina@cyprusdomus.com](mailto:katerina@cyprusdomus.com)

