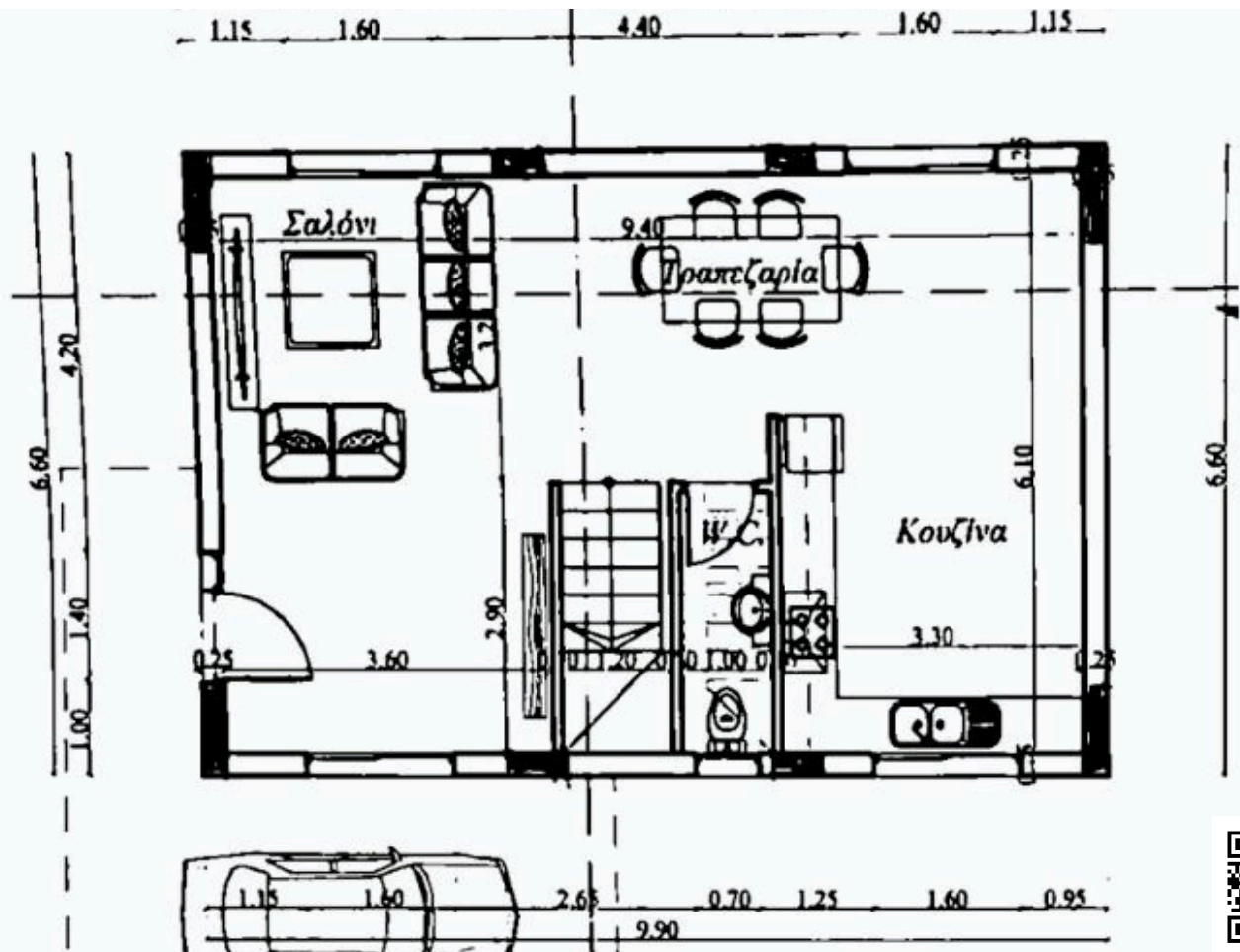


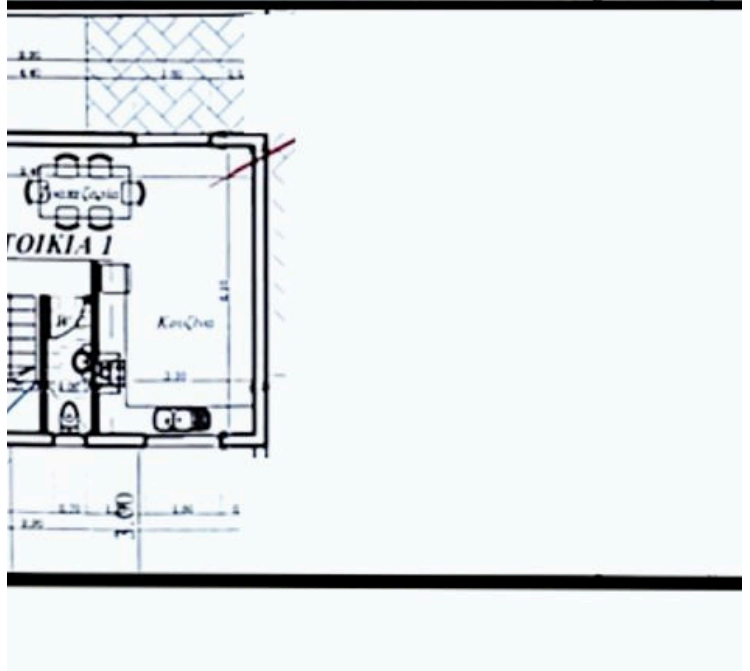
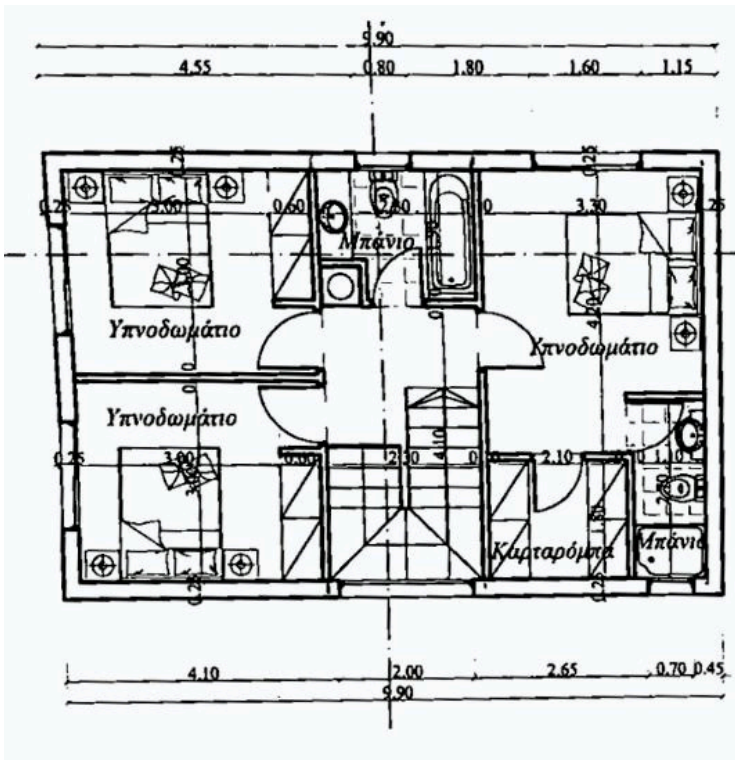
#6635

# New Detached House In Erimi Area

📍 Erimi, Limassol

€370,000 +VAT





# Overview

## Specifications

Bedrooms

 3

Bathrooms

 2

Covered

 130 m<sup>2</sup>

Type	<b>House</b>	Plot	<b>380 m<sup>2</sup></b>
Toilets	<b>1</b>	Status	<b>Off plan</b>

## Description

The house consists of an open plan kitchen, dining and living area, and 1 guest w/c on the ground floor.

The first floor includes 3 bedrooms and 2 bathrooms (1 en-suite).

\* Location on the map is indicative.



# Additional information

## Facilities

Aircondition, Split system

Heating, Provision

Solar photovoltaic panels, provision

Solar water heater

## Features

Double glazing


En suite bathroom

Pressurized water system

## Contact us



**Vassilis Papadopoulos**

 (+357) 99662023

 [info@cyprusdomus.com](mailto:info@cyprusdomus.com)

