

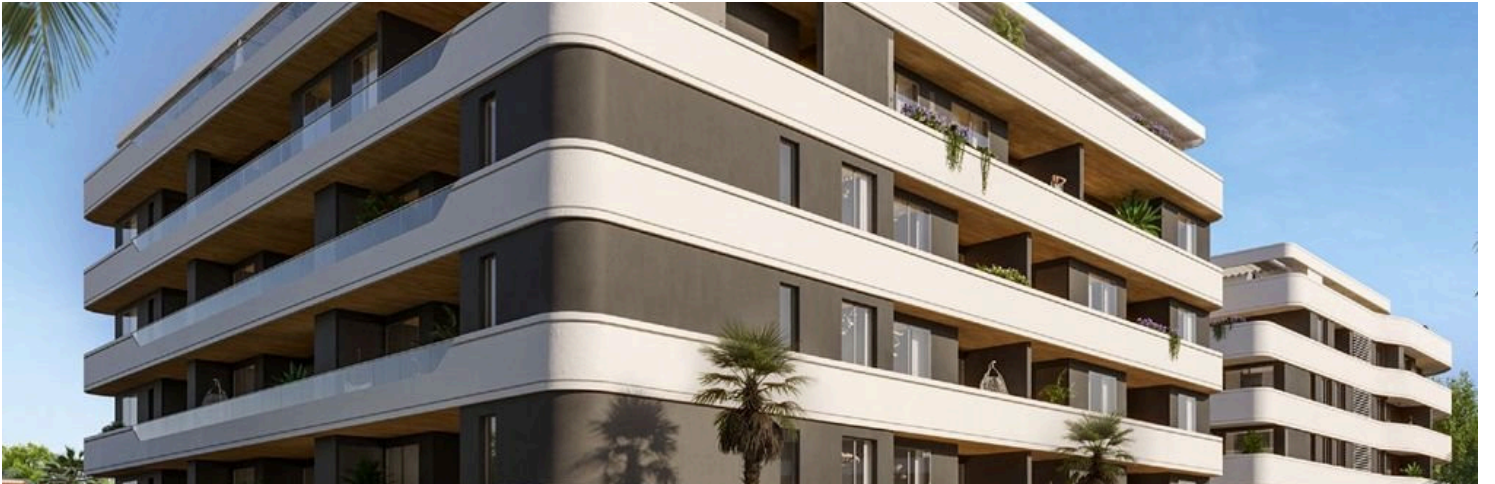
#6727

New Luxury Apartment In Germasogeia Area

📍 Germasogeia, Limassol

€530,000 +VAT





Overview

Specifications

Bedrooms



Bathrooms



Covered

 **56 m²**

Type

Apartment

Status

Under construction

Energy efficiency rating



Description

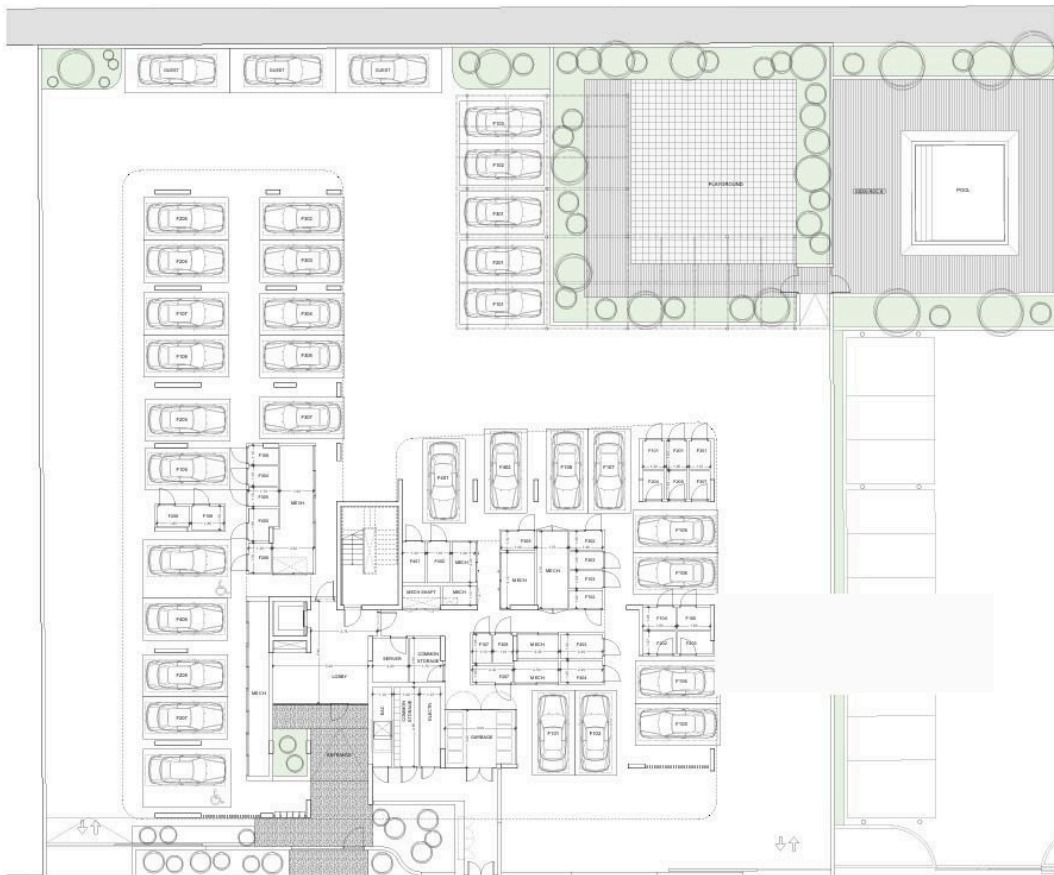
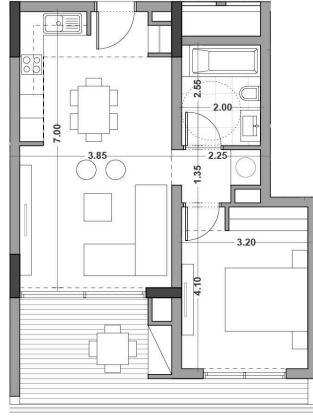
Luxury residential complex in central Limassol, in a privileged and quite neighborhood of the tourist area, approximately half a kilometer from the seafront.

The residents will enjoy hotel-type facilities: outdoor pool, indoor heated pool, SPA, concierge, playroom, club house, underground parking, large outdoor gardens, gym and playground for kids

*Location on the map is indicative.



Floor plans



Additional information

Facilities

Aircondition, Central system

Childrens playground

Gym

Heating, Underfloor

Indoor pool, Communal, heated

Landscaped garden

Parking, Covered

Pool, Communal

Sauna

Features

Double glazing

High ceilings

Thermal insulation

Contact us



Vassilis Papadopoulos

☎ (+357) 99662023

✉ info@cyprusdomus.com

