

#6816

New Commercial Building in Petrou & Pavlou Area.

 Petrou Kai Pavlou, Limassol

€7,000,000 +VAT





Overview

Specifications

Covered

 **1897.22 m²**

Type	Commercial Building	Status	Off plan
Plot	527 m²		

Description

The six-story building, spanning 1897 square meters, is a contemporary commercial property that offers a comprehensive and functional layout for businesses.

With a thoughtfully designed structure, it caters to modern needs while ensuring ample space, ease of access, and flexibility for various business purposes.

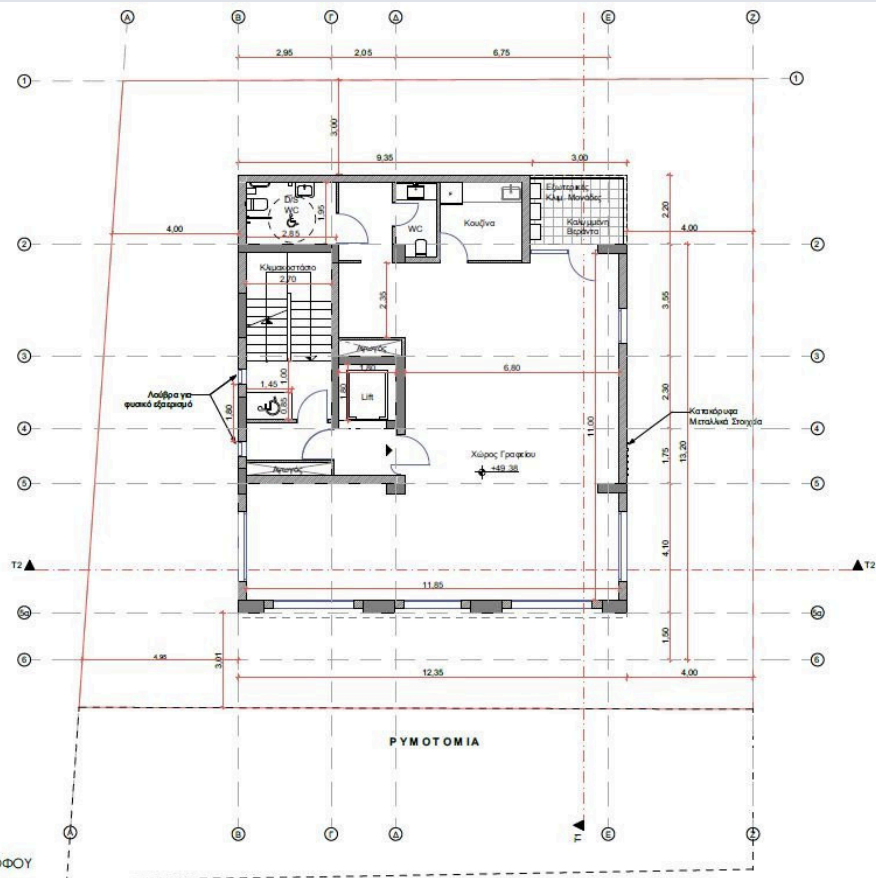
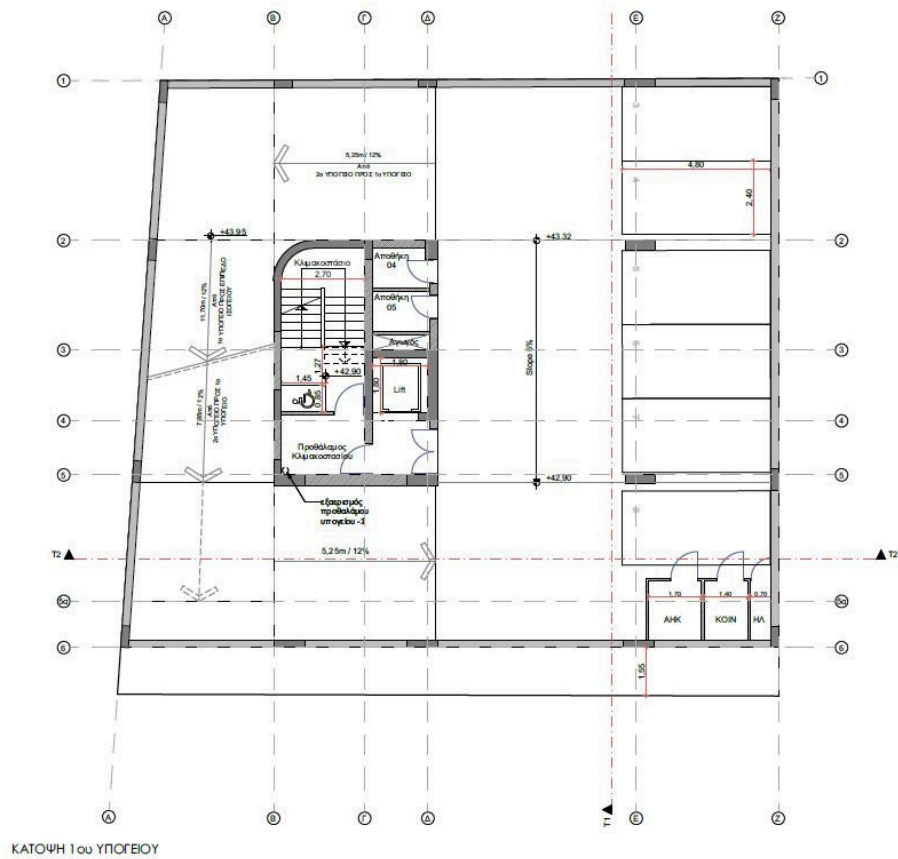
Large windows line the front exterior of the building, allowing abundant natural light to flood the space and offering inspiring views of the city skyline.

Upon entering the building, you're welcomed into a spacious, inviting lobby. Above the lobby, the building comprises six floors of open-space office areas.

*Location on map is indicative.



Floor plans



Additional information

Facilities

Parking, Underground

Solar photovoltaic panels

Features

Entrance gate

Contact us



Katerina Athini

✉ katerina@cyprusdomus.com

