

#6830

New Modern Commercial Building For Sale in Mesa Geitonia area.

 Mesa Geitonia, Limassol

€7,750,000 +VAT





Overview

Specifications

Covered

 **1049 m²**

Type

Commercial Building

Status

Under construction

Energy efficiency rating

 **A**

Description

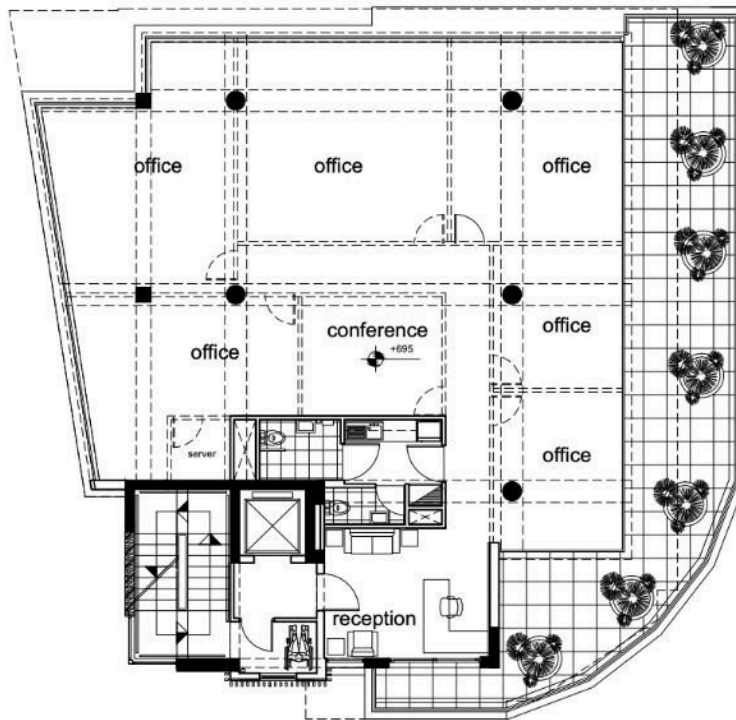
The building is comprised of a shop with mezzanine and 4 floors of offices for a total area of around 1302 plus a basement. It has 18 parking spaces and high rise reception and lobby area, creating the most welcoming and functional environment for occupants and guests. It enjoys a sea view on the upper floor and can accommodate a roof garden, as an optional feature.

It is designed with most premium material and up to date technical specification, and it will be energy efficient with ample green areas, in its interior and exterior façade, and can be delivered bear-shell allowing for customizations and design.

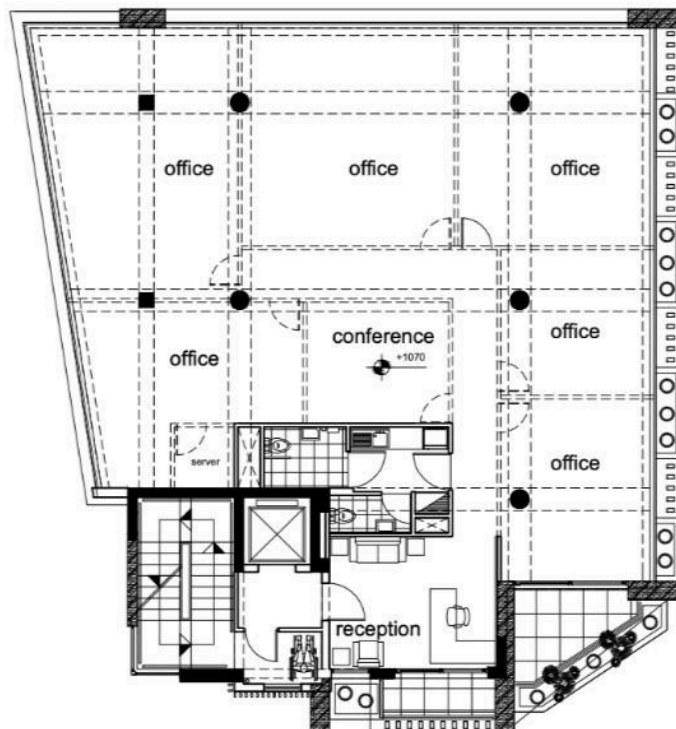
*Location on map is indicative.



Floor plans



1st floor - office



2nd floor - office



Additional information

Features

Lobby

Contact us



Katerina Athini

✉ katerina@cyprusdomus.com

