

#6890

New Contemporary Design Apartment At Panthea Area

📍 Panthea, Limassol

€250,000 +VAT





Overview

Specifications

Bedrooms



Bathrooms



Covered

 **65 m²**

Type

Apartment

Status

Under construction

Description

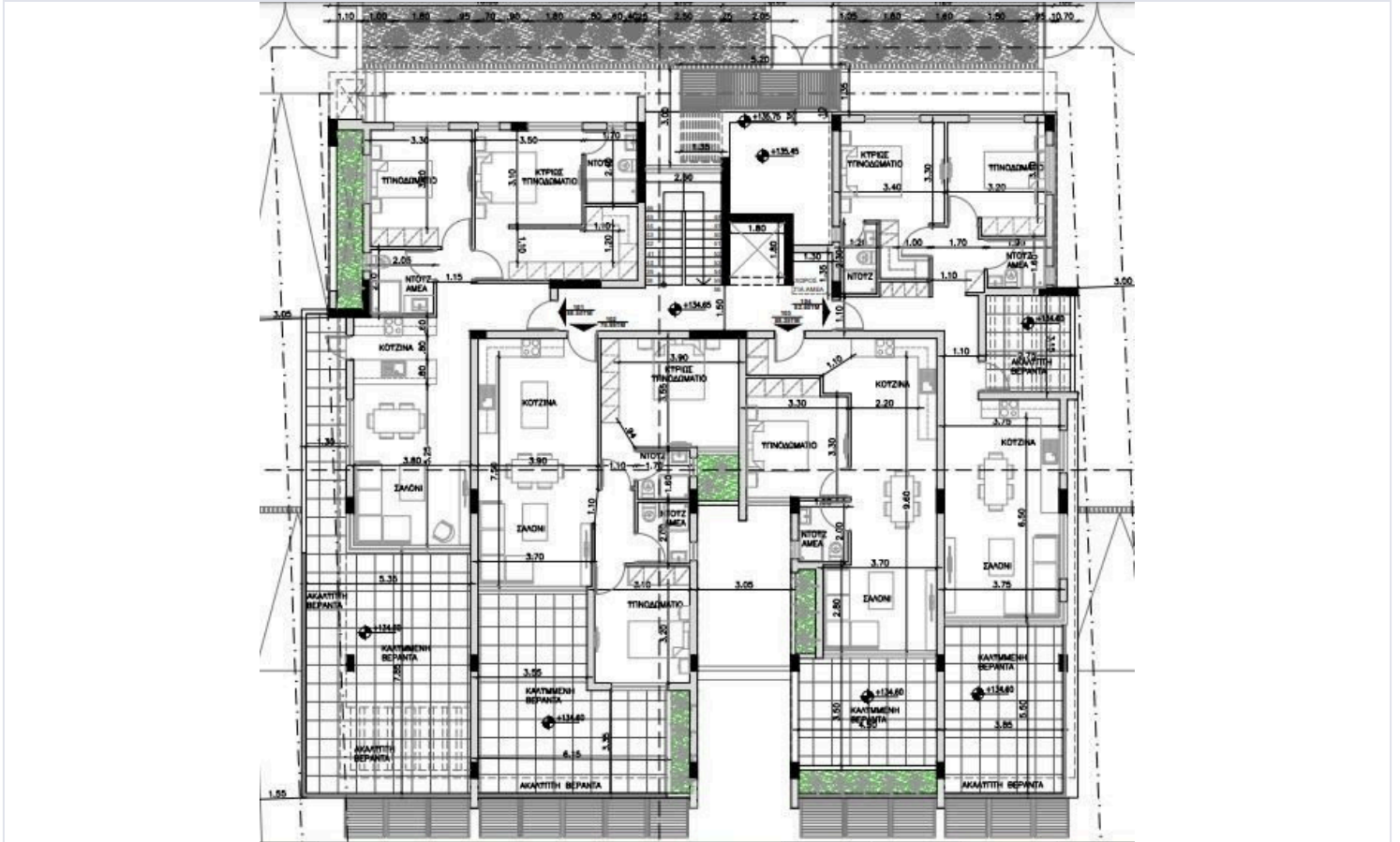
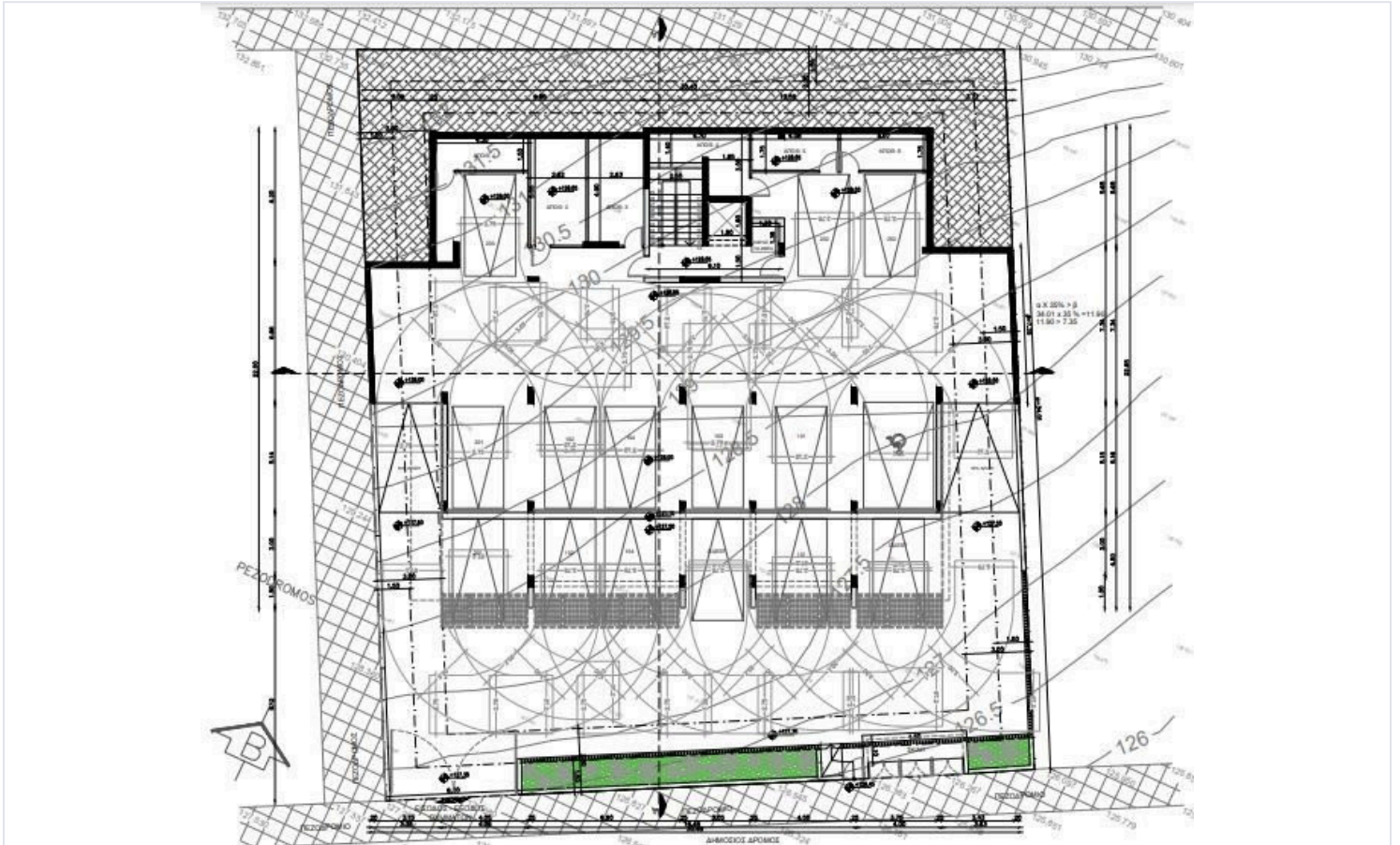
The apartment consists of an open plan kitchen, dining and living area, 1 bedroom and 1 bathroom.

It has 1 covered parking and storage room.

*Location on the map is indicative.



Floor plans



Additional information

Facilities

Aircondition, Provision

Heating, Provision

Parking, Covered

Storage

Features


Double glazing


Thermal insulation

Contact us



Vassilis Papadopoulos

 (+357) 99662023

 info@cyprusdomus.com

