

#6942

New Modern Penthouse In Ypsonas Area

📍 Ypsonas, Limassol

€259,000 +VAT





Overview

Specifications

Bedrooms



2

Bathrooms



2

Covered



98 m²

Type

Apartment

Status

Off plan

Description

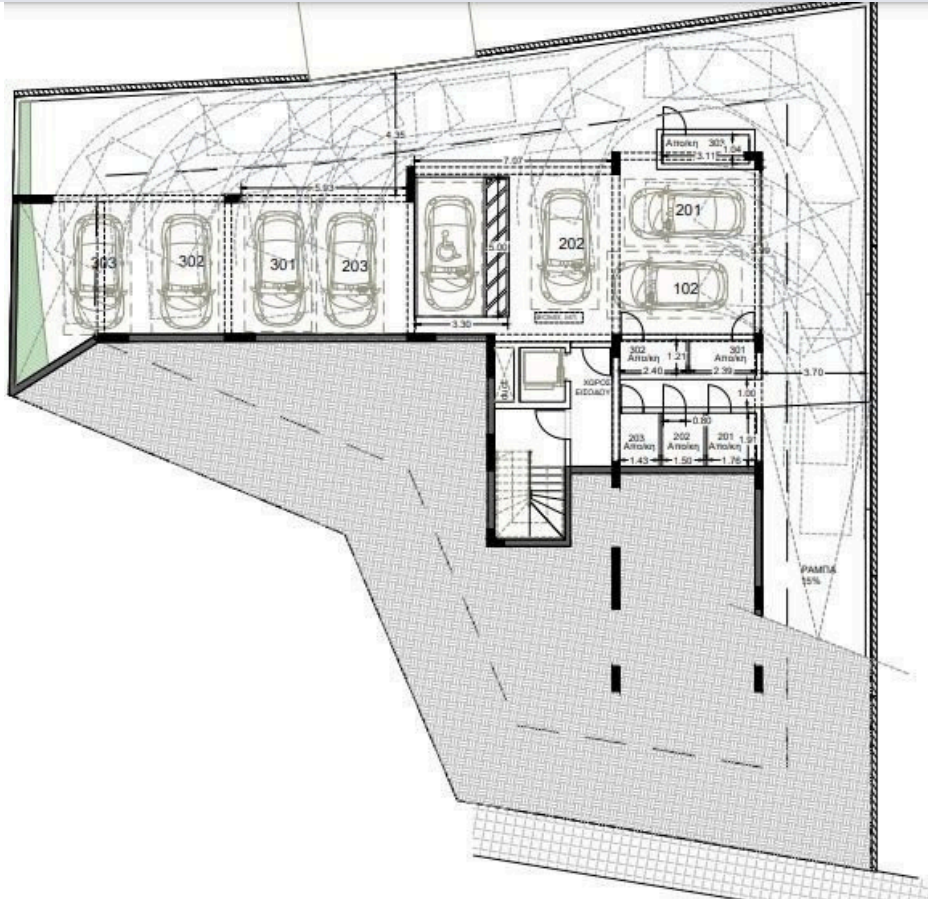
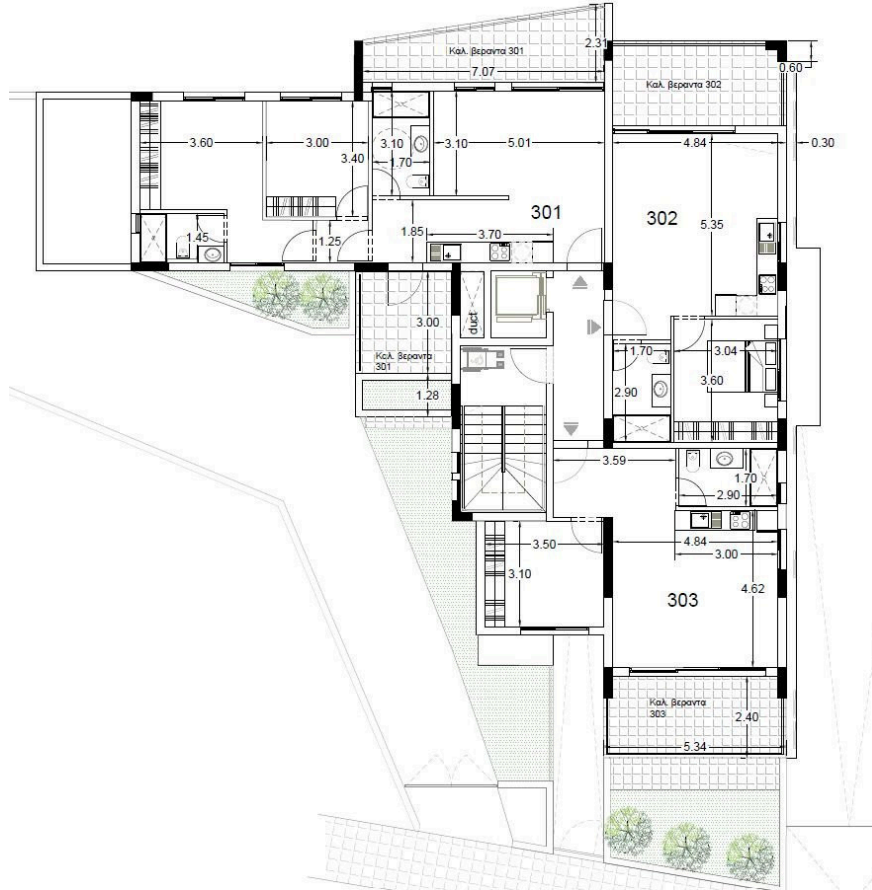
The Apartment consists of an open plan kitchen, dining and living area, 2 bedrooms and 2 bathrooms.

It has 1 parking and 1 storage.

*Location on the map is indicative.



Floor plans



Additional information

Facilities

Parking, Covered

Storage


Features

En suite bathroom

Contact us



Vassilis Papadopoulos

 (+357) 99662023

 info@cyprusdomus.com

