

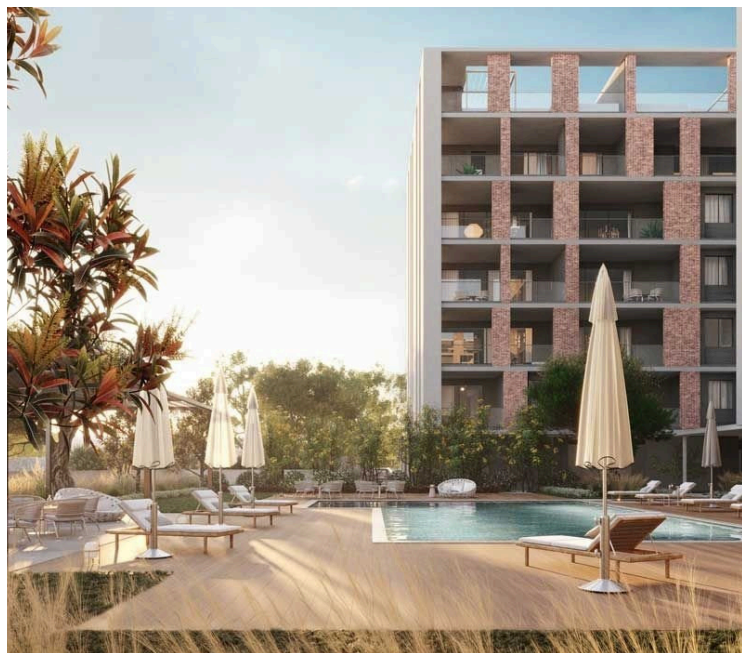
#7010

# New Luxury Apartments In Germasogeia Area

📍 Germasogeia Tourist Area, Limassol

€920,000 +VAT





# Overview

## Specifications

Bedrooms

 2

Bathrooms

 2

Covered

 90.8 m<sup>2</sup>

Type

**Apartment**

Status

**Under construction**

Energy efficiency rating

 **A**

## Description

The Project is located in a thriving location, a central spot in the heart of Limassol's tourist area, bustling with vibrancy, incredible shopping and an endless array of upscale restaurants.

The Mediterranean lifestyle comes easy in this city.

Every detail has been carefully designed to bring home the best of Mediterranean living with comfort and style.

This complex will complement your taste for fine living and energize a thriving new destination.

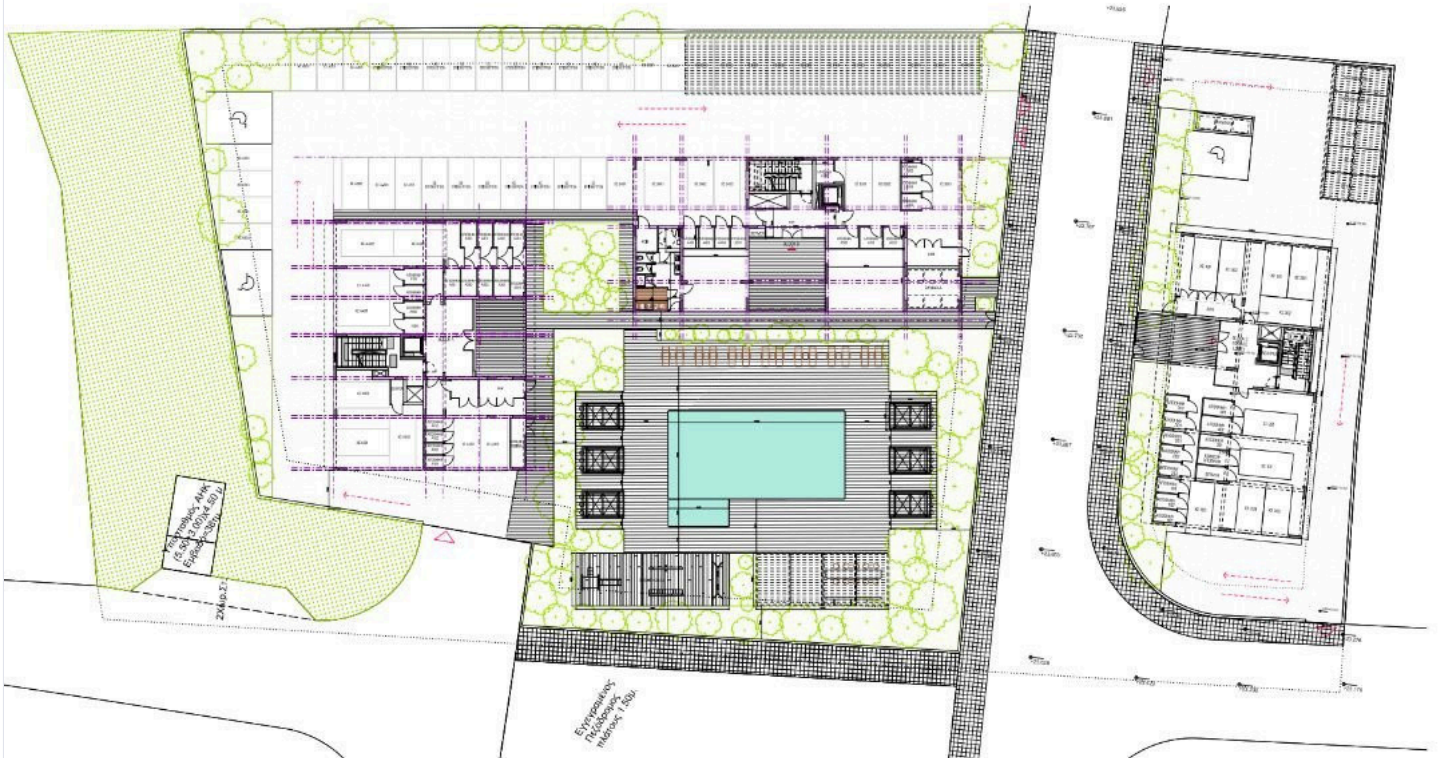
Surrounded by endless panoramic sea views, this stunning city and iconic area is an example of resort living at its best.

Each apartment and penthouse provides an intelligent, efficient and functional design through creativity and purpose.

\*Location on the map is indicative.



# Floor plans



# Additional information

## Facilities

Aircondition, Central system

Gym

Heating, Underfloor

Parking, Covered

Pool, Communal

Sauna

Storage

## Features

Double glazing

High ceilings

Thermal insulation

## Contact us



**Vassilis Papadopoulos**

☎ (+357) 99662023

✉ info@cyprusdomus.com

