

#7016

New Penthouse With Roof Garden in Episkopi area

📍 Episkopi Lemesou, Limassol

€255,000 +VAT





Overview

Specifications

Bedrooms



2

Bathrooms



2

Covered



82 m²

Type

Apartment

Status

Under construction

Year of construction

2025

Energy efficiency rating

 **A**

Description

The apartment building is only 2 floors and consists of 6 apartments in total.

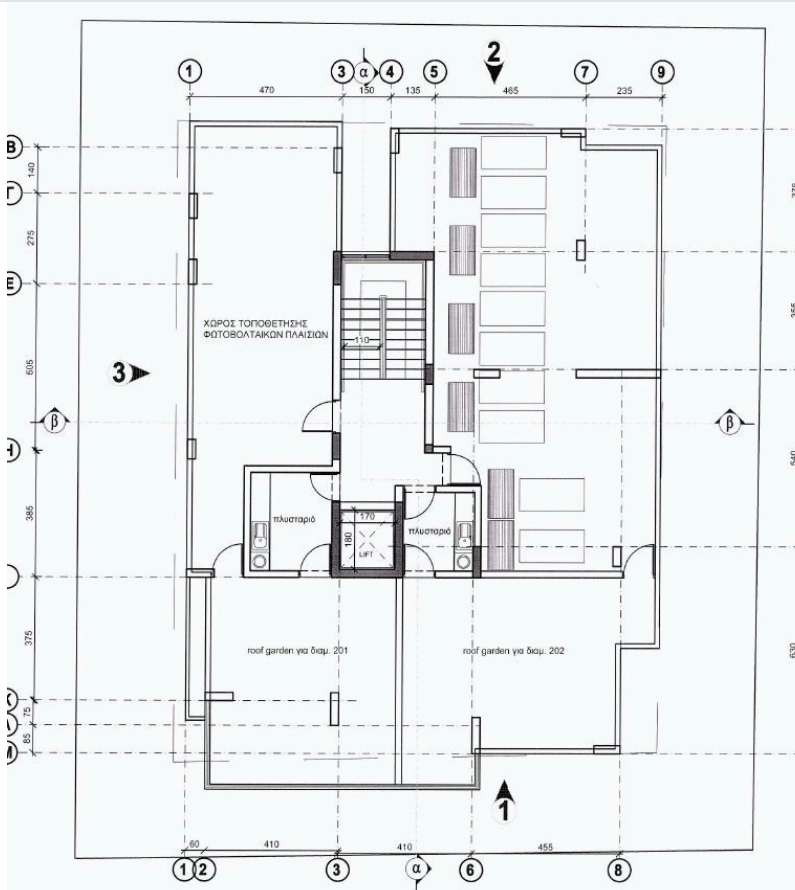
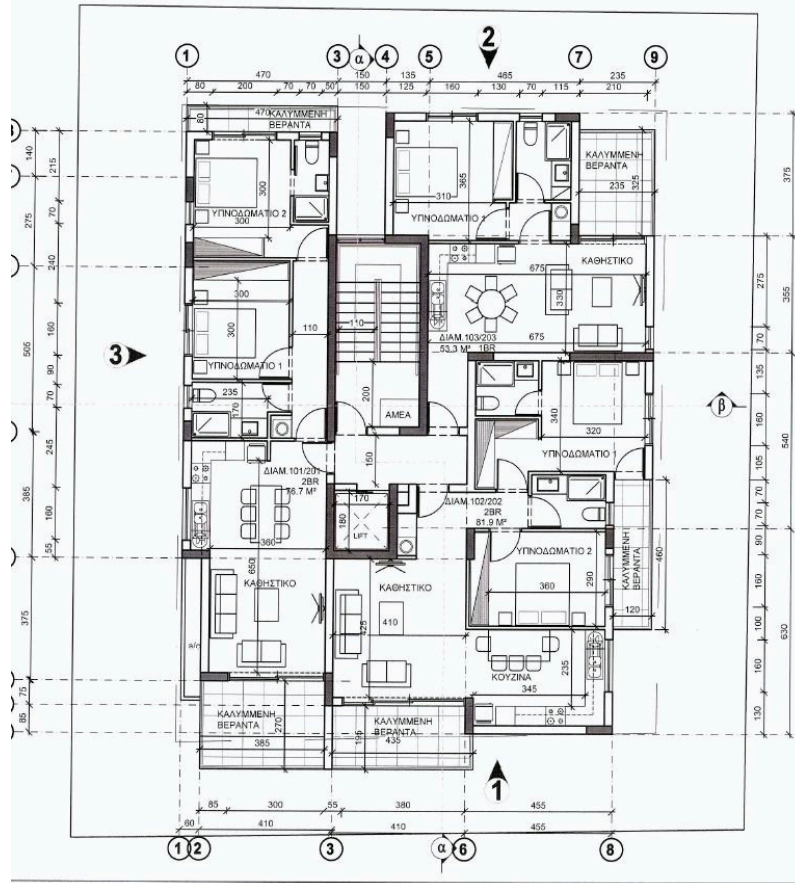
The penthouse consists of an open plan kitchen, dining and living area, 2 bedrooms and 2 bathrooms (1 ensuite).

It has covered parking and storage room.

It is located in a quite residential area with easy access from/to the highway and in close proximity to all amenities.



Floor plans



Additional information

Facilities

Parking, Covered

Features

Balcony

En suite bathroom

Open plan

Roof garden

Contact us



Katerina Athini

✉ katerina@cyprusdomus.com

