

#7017

New Semi-Detached Houses In Episkopi

📍 Episkopi Lemesou, Limassol

€350,000 +VAT



Overview

Specifications

Bedrooms		Bathrooms		Covered	
 3		 2		 144 m ²	
Type		House		Plot	
Toilets		1		Status	
				164 m ²	
				Off plan	

Description

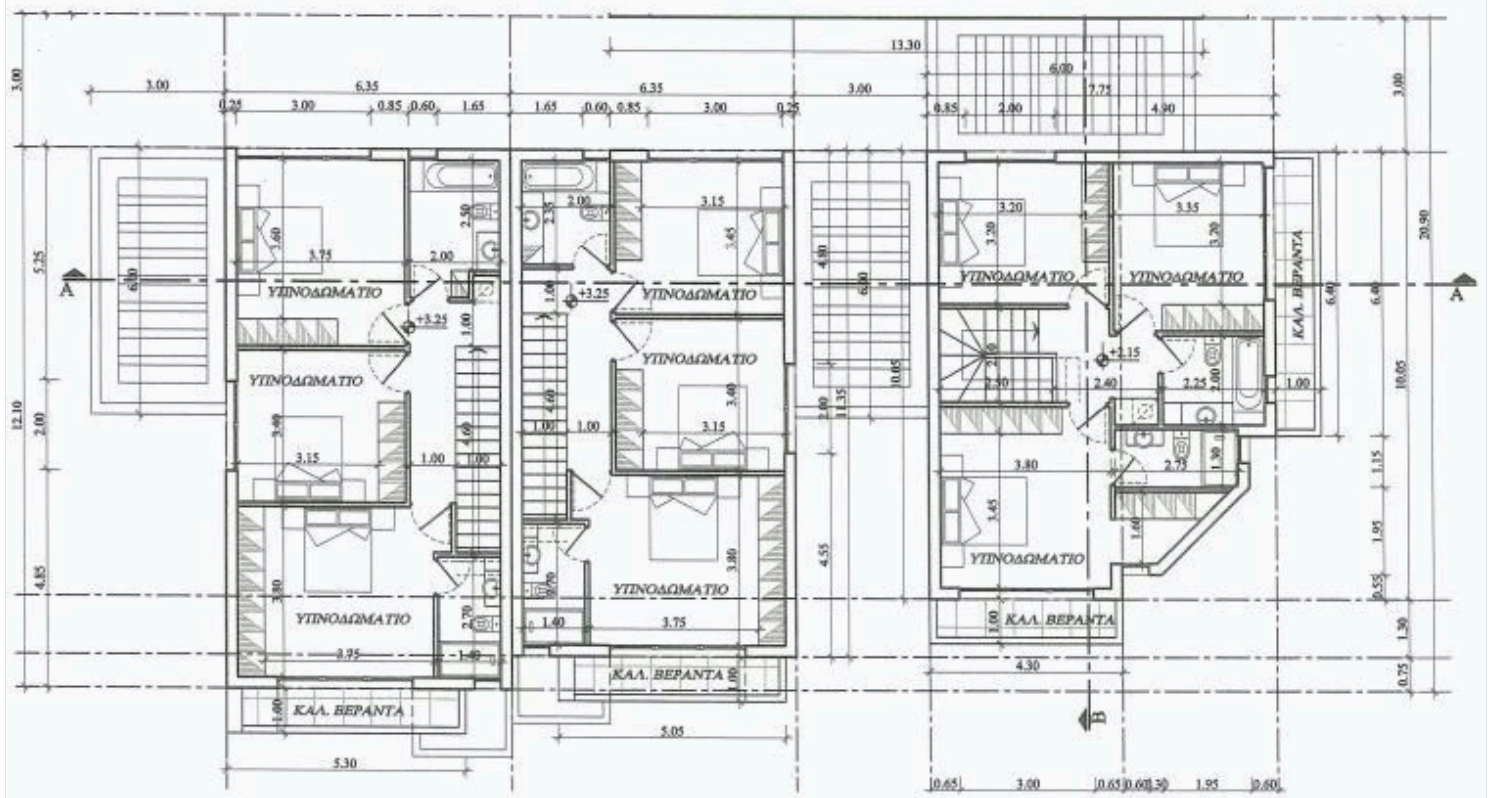
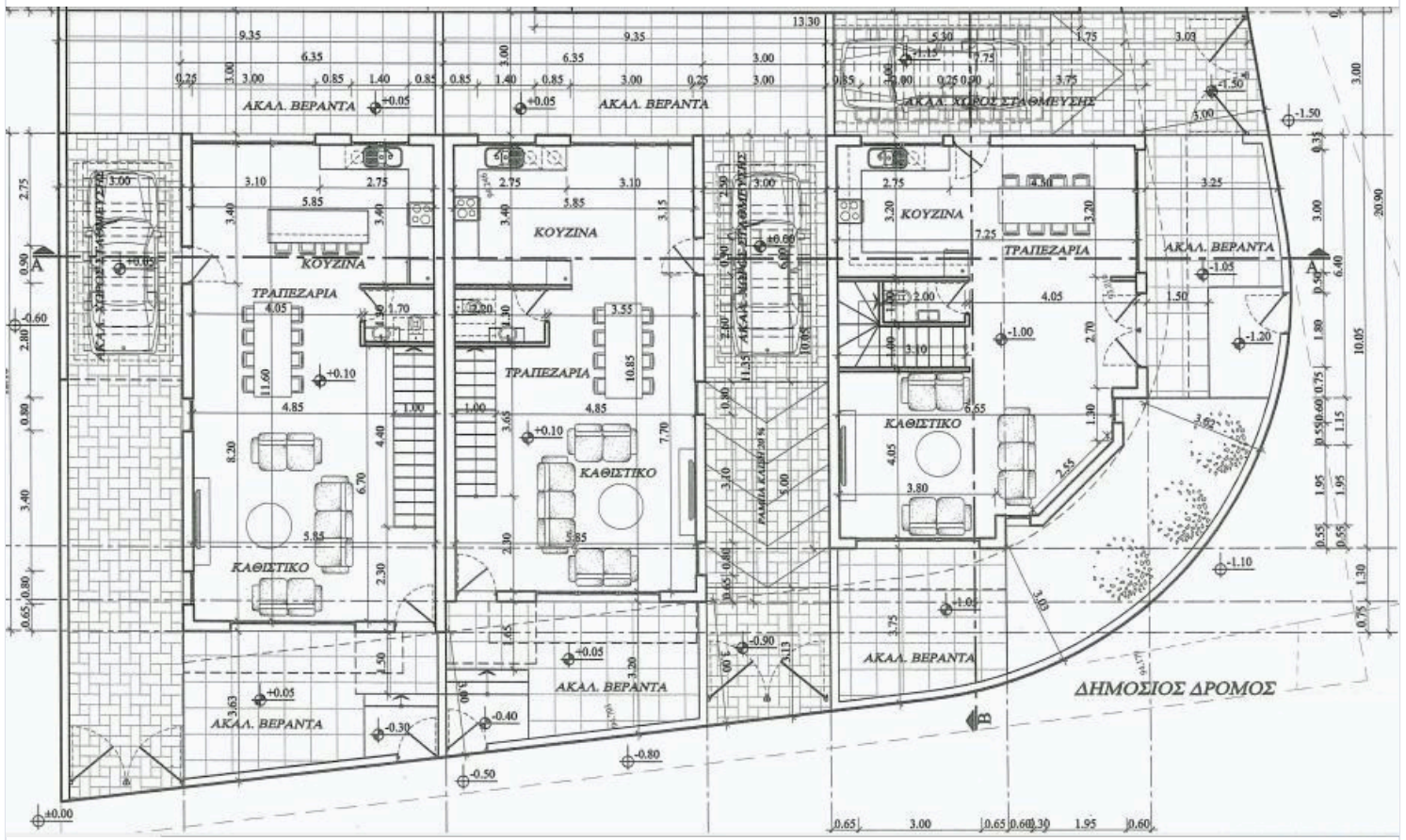
The houses consist of an open plan kitchen, dining and living area, 3 bedrooms, 2 bathrooms (1 en-suite) and 1 guest w/c.

*Featured House 2

*Location on the map is indicative.



Floor plans



Additional information

Contact us



Vassilis Papadopoulos

☎ (+357) 99662023

✉ info@cyprusdomus.com

