

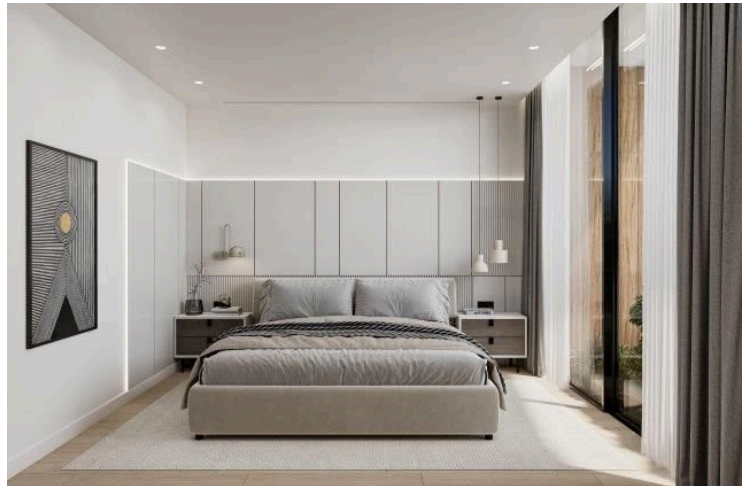
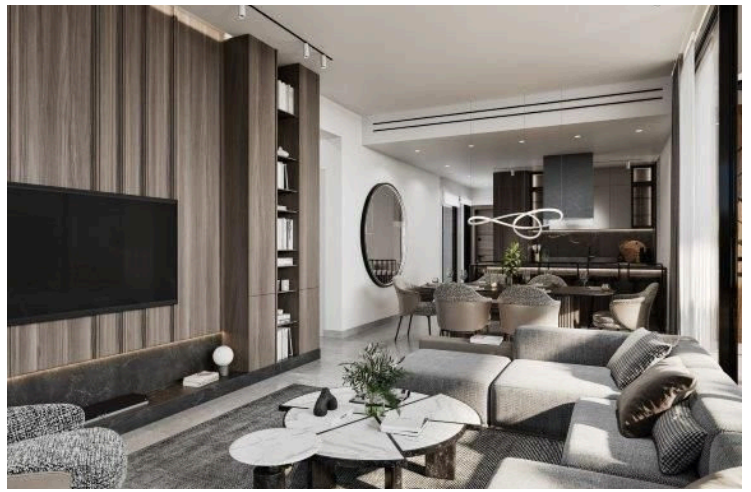
#7068

New Apartments For Sale in Germasogeia Area.

📍 Germasogeia, Limassol

€500,000 +VAT





Overview

Specifications

Bedrooms



2

Bathrooms



2

Covered



80 m²

Type

Apartment

Status

Off plan

Description

With a generous internal space of 80 m², this stylish unit features two well-sized bedrooms and two contemporary bathrooms, ideal for families or those looking for a comfortable retreat.

Situated on the second floor of a three-story building, this apartment is designed to maximize natural light and provide a welcoming atmosphere.

You will find a variety of local shops, cafes, and restaurants in close distance, making everyday living convenient and enjoyable.

Additionally, the close proximity to the highway ensures easy access to nearby attractions and cities, enhancing your lifestyle.

*Location on map is indicative



Additional information

Facilities

Heating, Central

Parking, Covered

Solar water heater

Storage

Features

Easy access to highway

Easy access to main roads

Fitted wardrobes

High ceilings

Near amenities

Contact us



Katerina Athini

✉ katerina@cyprusdomus.com

