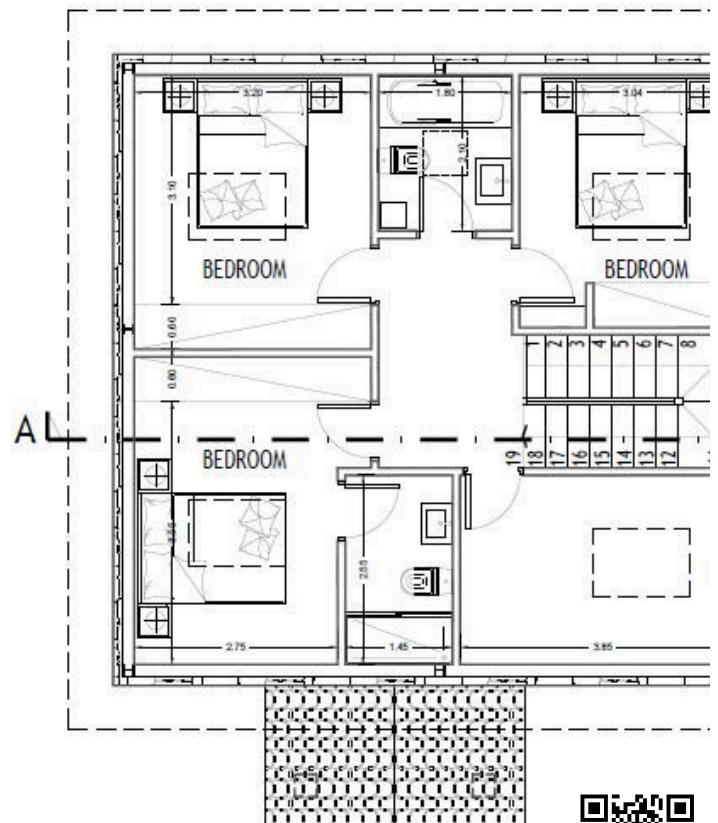
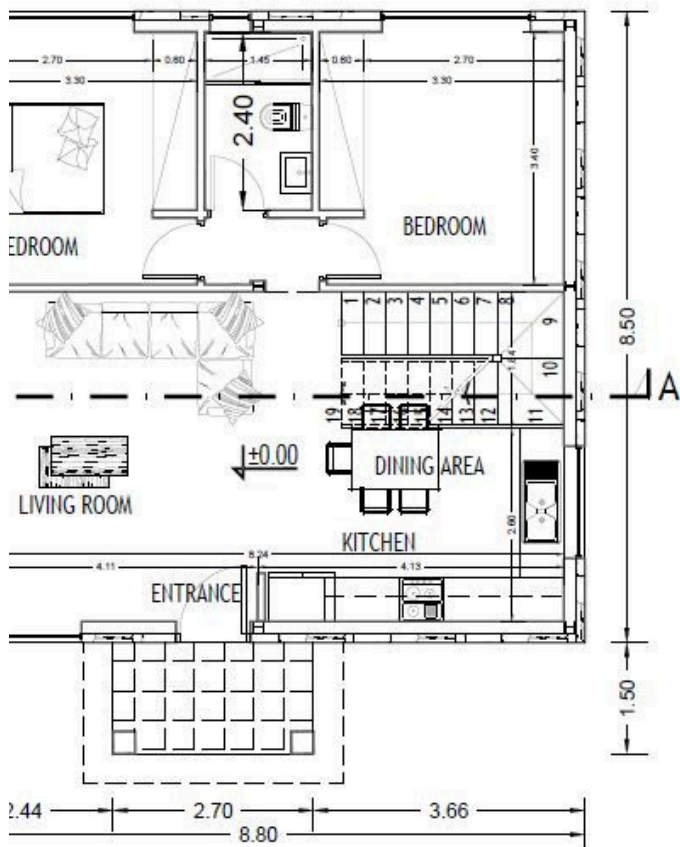


#7071

New Stone House in Souni Area

📍 Souni, Limassol

€365,000 +VAT



Overview

Specifications

Bedrooms



Bathrooms



Covered



Type	House	Status	Off plan
Plot	375 m²	Structure	Stone

Description

This is a stunning house in Souni, offering a modern living experience with an impressive internal space of 140 m². Designed with comfort and style in mind, this home features four spacious bedrooms, perfect for families or those wanting extra room for guests. With two well-appointed bathrooms, convenience is prioritized for everyday living.

Souni is a charming village known for its serene environment and beautiful landscapes. Surrounded by lush greenery, this area offers a peaceful lifestyle while still being close to essential amenities. Enjoy the benefits of local markets, restaurants, and recreational activities without sacrificing tranquility.

The house is completely stone built and will have red roof tiles.

-Option for a swimming pool at extra cost.

*Location on map is indicative



Additional information

Facilities

Aircondition, Split system

Heating, Provision

Solar water heater

Contact us



Katerina Athini

✉ katerina@cyprusdomus.com

