

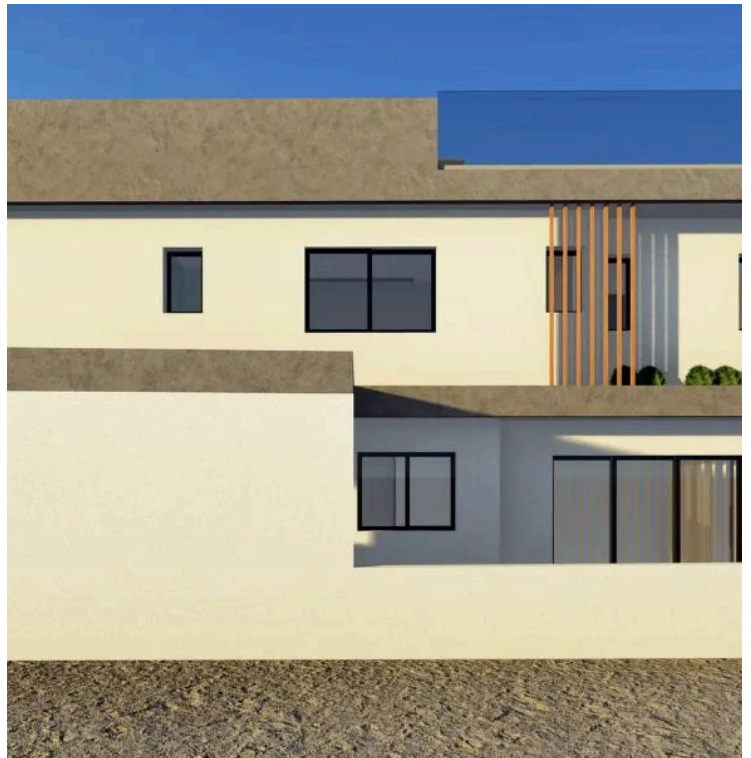
#7073

New Semi Detached House For Sale

📍 Pano Polemidia, Limassol

€470,000 +VAT





Overview

Specifications

Bedrooms



3

Bathrooms



2

Covered

175 m²

Type	House	Plot	280 m ²
Toilets	1	Status	Under construction

Description

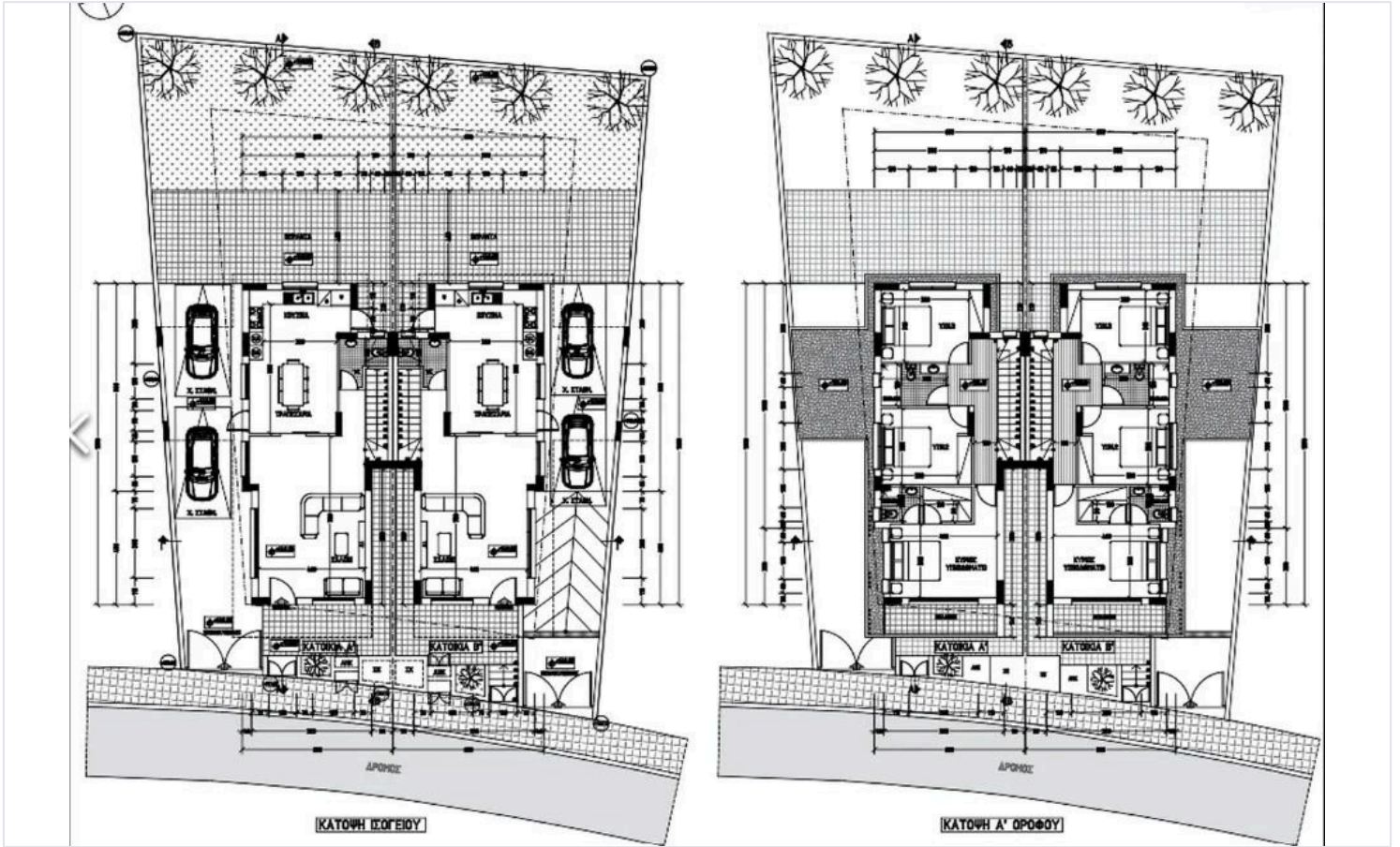
This spacious home covers an internal area of 175 m² and features three well-designed bedrooms two bathrooms, and one guest w/c.

Residents enjoy easy access to local parks, schools, and shopping centers, making it an ideal location for both young families and professionals. The area boasts convenient transport links, ensuring that you are never far from the bustling city life.

*Location on map is indicative



Floor plans



Additional information

Facilities

Parking, Covered

Solar water heater

Features

Barbeque

Garden

Quiet area

Roof garden

Contact us



Katerina Athini

✉ katerina@cyprusdomus.com

