

#7110

New Penthouses For Sale in Erimi Area

📍 Erimi, Limassol


€160,000 +VAT





Overview

Specifications

Bedrooms	Bathrooms	Covered	
 1	 1	 50.3 m ²	
Type	Apartment	Status	Off plan

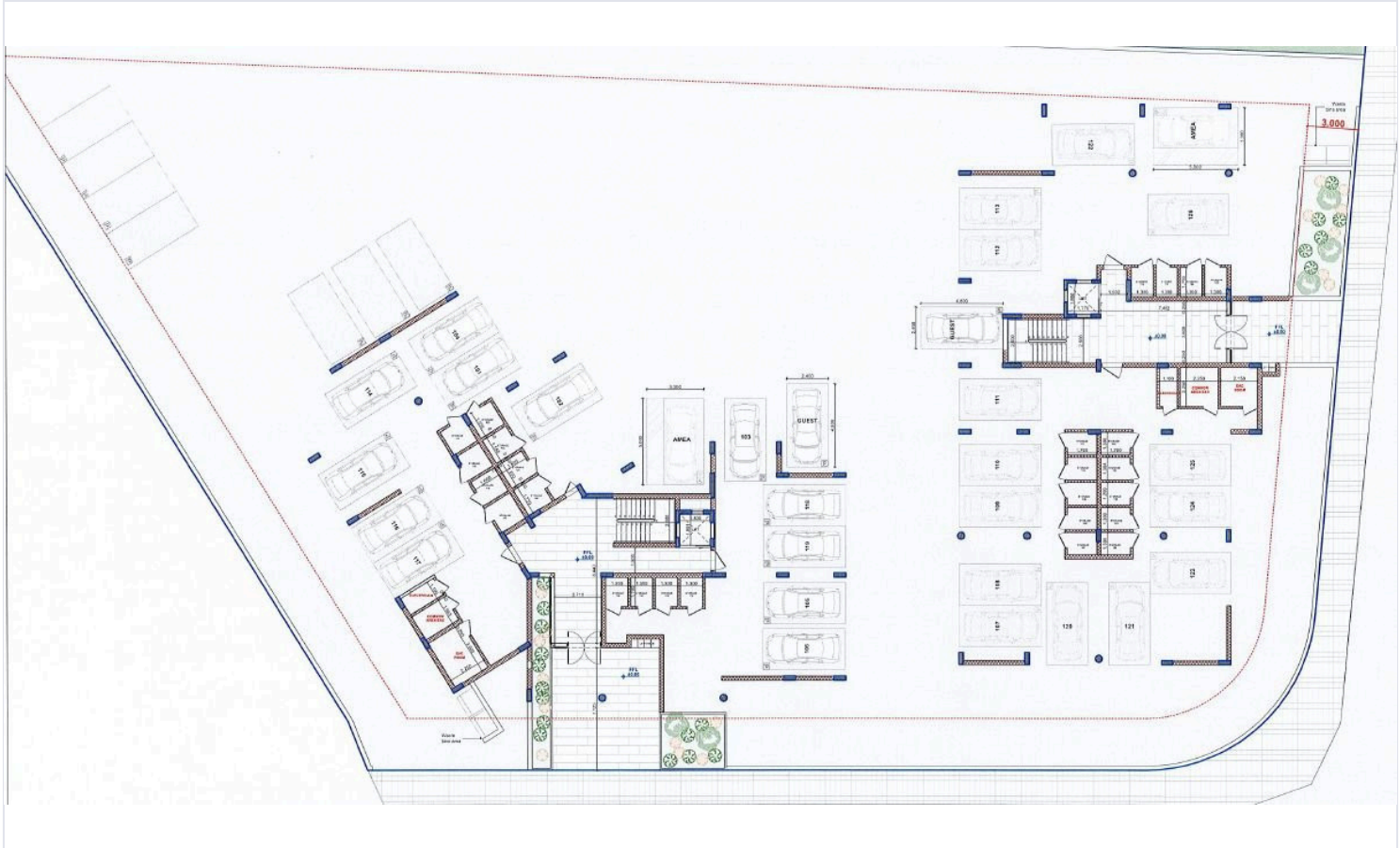
Description

This inviting residence features an internal space of 50.3 square meters and encompasses one bedroom and one bathroom, making it ideal for singles or couples seeking a modern lifestyle.

The area boasts beautiful landscapes, including nearby hills and scenic views, providing a peaceful retreat while still being close to urban conveniences. Residents enjoy easy access to essential amenities such as shops, cafes, and schools, ensuring that daily needs are met with ease.

*Location on map is indicative.



[illegible]

Additional information

Facilities

Aircondition, Provision
Storage

Parking, Covered

Solar water heater

Features

Ceramic tiles
Open plan

Laminate flooring
Pressurized water system

Near amenities

Contact us



Katerina Athini

✉ katerina@cyprusdomus.com

