

#7111

New Penthouses with Roof Garden For Sale in Erimi Area

📍 Erimi, Limassol

€250,000 +VAT





Overview

Specifications

Bedrooms



2

Bathrooms



1

Covered

77.6 m²

Type

Apartment

Status

Off plan

Description

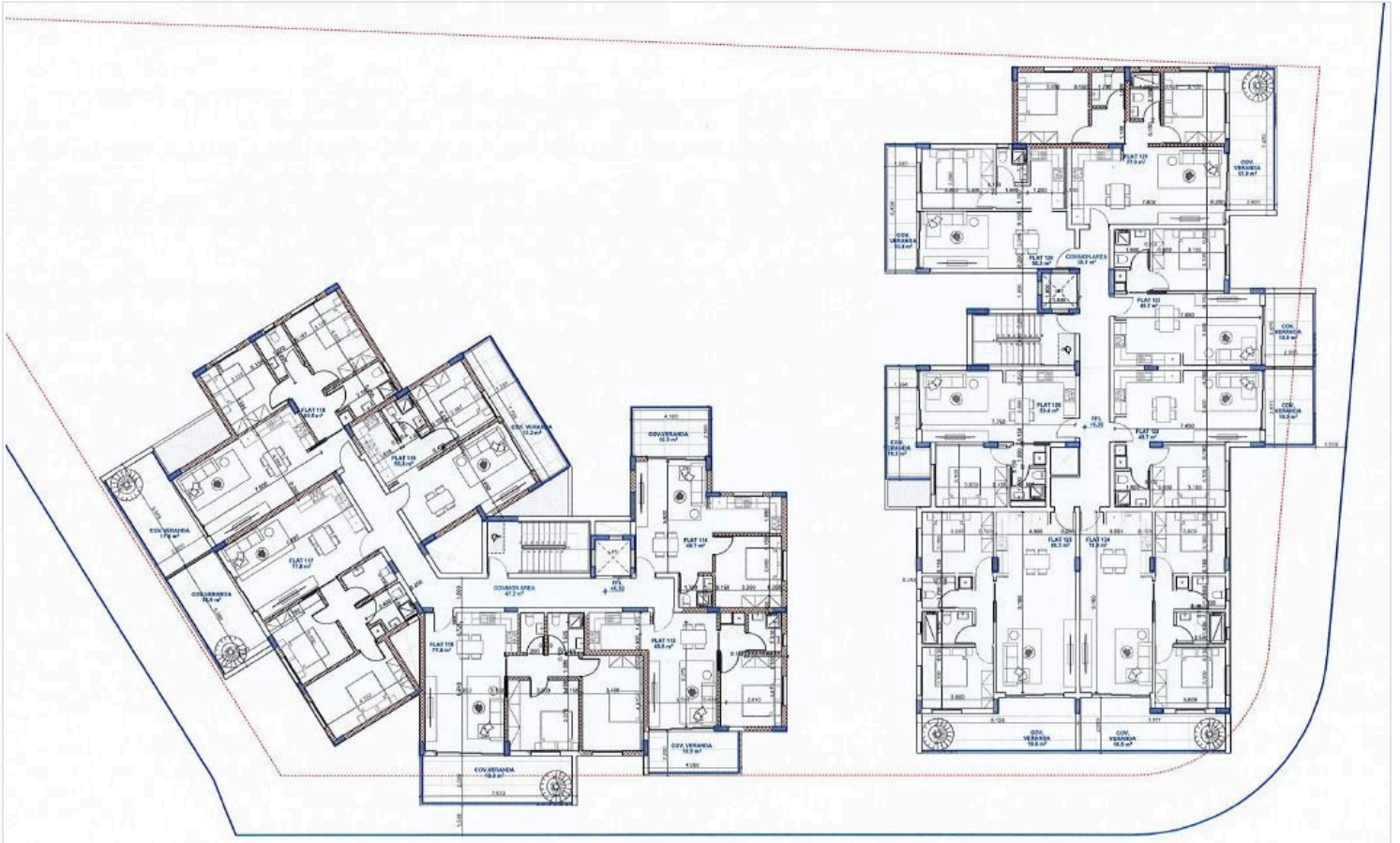
With a generous internal space of 77.6 m², this apartment features two spacious bedrooms, one modern bathroom and one guest w/c, designed to offer comfort and convenience.

The area boasts beautiful landscapes, including nearby hills and scenic views, providing a peaceful retreat while still being close to urban conveniences. Residents enjoy easy access to essential amenities such as shops, cafes, and schools, ensuring that daily needs are met with ease.

*Location on map is indicative.



Floor plans



Additional information

Facilities

Parking, Covered

Solar water heater

Storage

Features

Near amenities

Open plan

Roof garden

Contact us



Katerina Athini

✉ katerina@cyprusdomus.com

