

#7146

New Semi-Detached House For Sale in Ypsonas Area

 Ypsonas, Limassol

€365,000 +VAT





Overview

Specifications

Bedrooms



3

Bathrooms



2

Covered

129.23 m²

Type	House
Toilets	1
Plot	155 m ²
Covered veranda	24.75 m ²

Uncovered veranda	9.37 m ²
Covered parking	21.13 m ²
Status	Off plan

Description

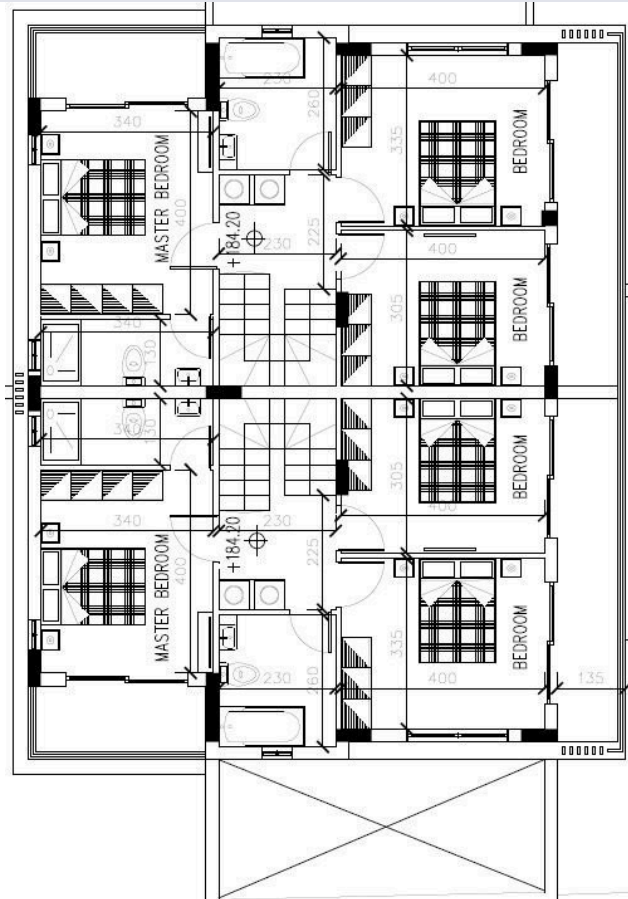
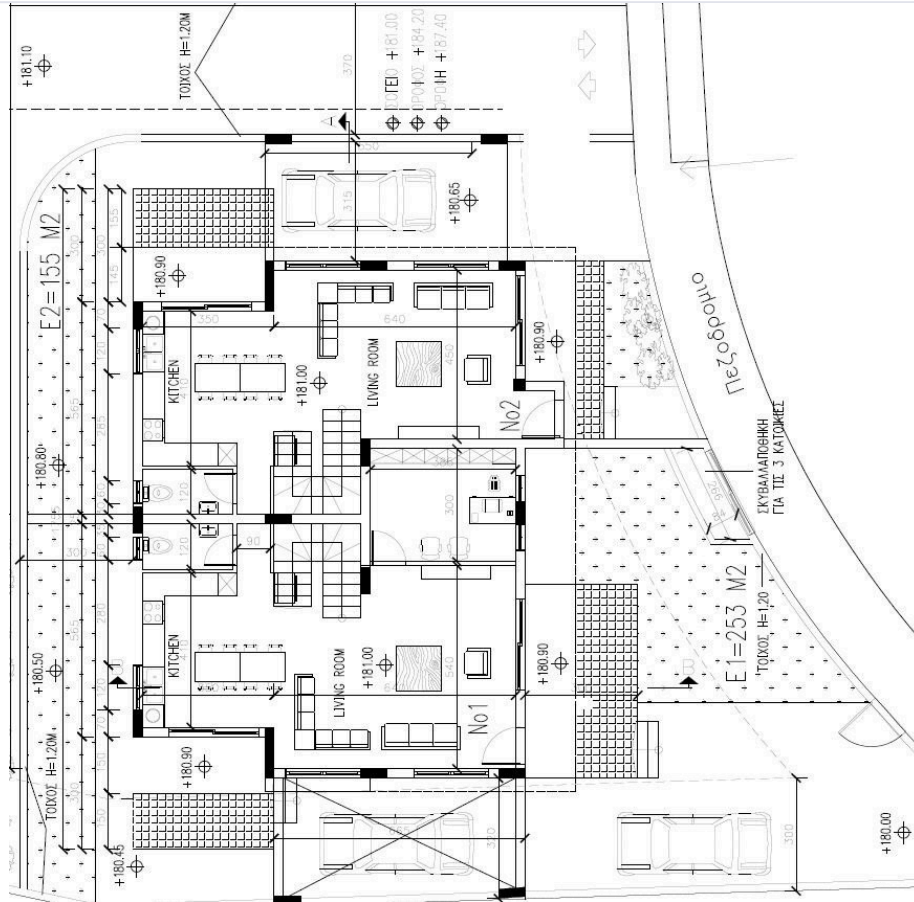
This spacious house boasts an internal area of 129.23 square meters, featuring three well-sized bedrooms that create a warm and inviting atmosphere. Two modern bathrooms and 1 guest w/c offer convenience for families or guests.

Residents enjoy easy access to local shops, schools, and parks, making it an ideal location for families and professionals alike. The proximity to the highway ensures smooth connections to other parts of the region, adding to the convenience of living in this vibrant area.

*Location on map is indicative.



Floor plans



Additional information

Facilities

Aircondition, Provision

Heating, Underfloor

Parking, Covered

Pool, Optional

Solar photovoltaic panels

Solar water heater

Features

Easy access to highway

Easy access to main roads

En suite bathroom

Granite countertops

Guest WC

Shutters, electric (provision)

Contact us



Katerina Athini

✉ katerina@cyprusdomus.com

