

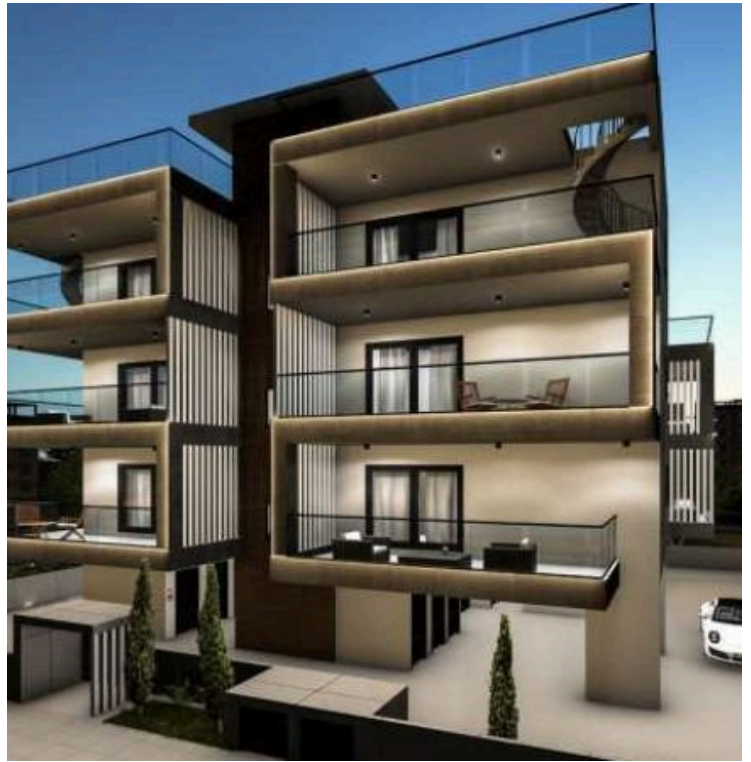
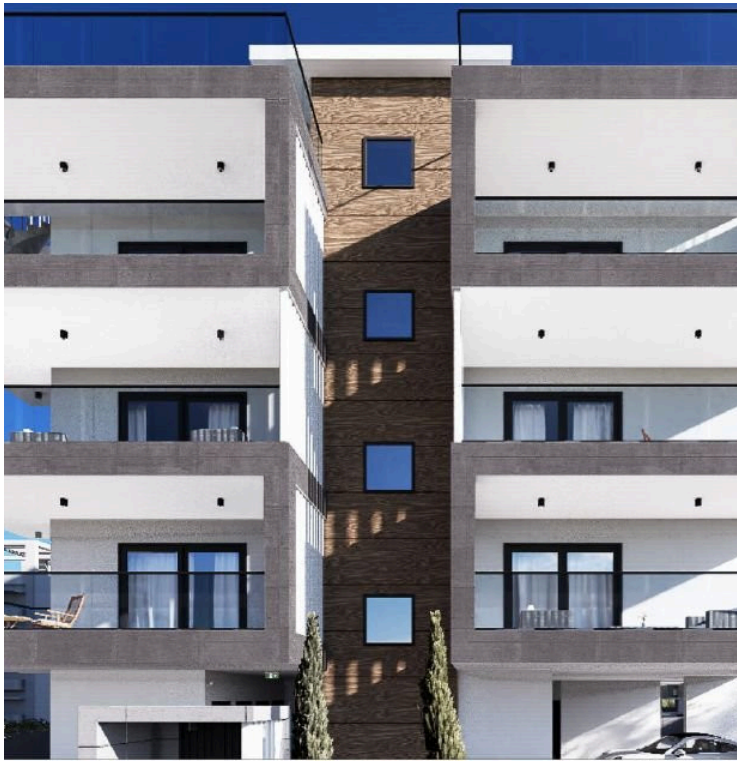
#7219

# New Modern Apartment For Sale in Petrou & Pavlou Area

📍 Petrou Kai Pavlou, Limassol

€245,000 +VAT





# Overview

## Specifications

Bedrooms



1

Bathrooms



1

Covered

50 m<sup>2</sup>

Type

**Apartment**

Status

**Off plan**

Energy efficiency rating



## Description

This modern apartment offers a spacious internal area of 50 square meters, featuring one well-designed bedroom and one bathroom. Located on the second floor of a three-story building, this apartment is easily accessible with an included elevator.

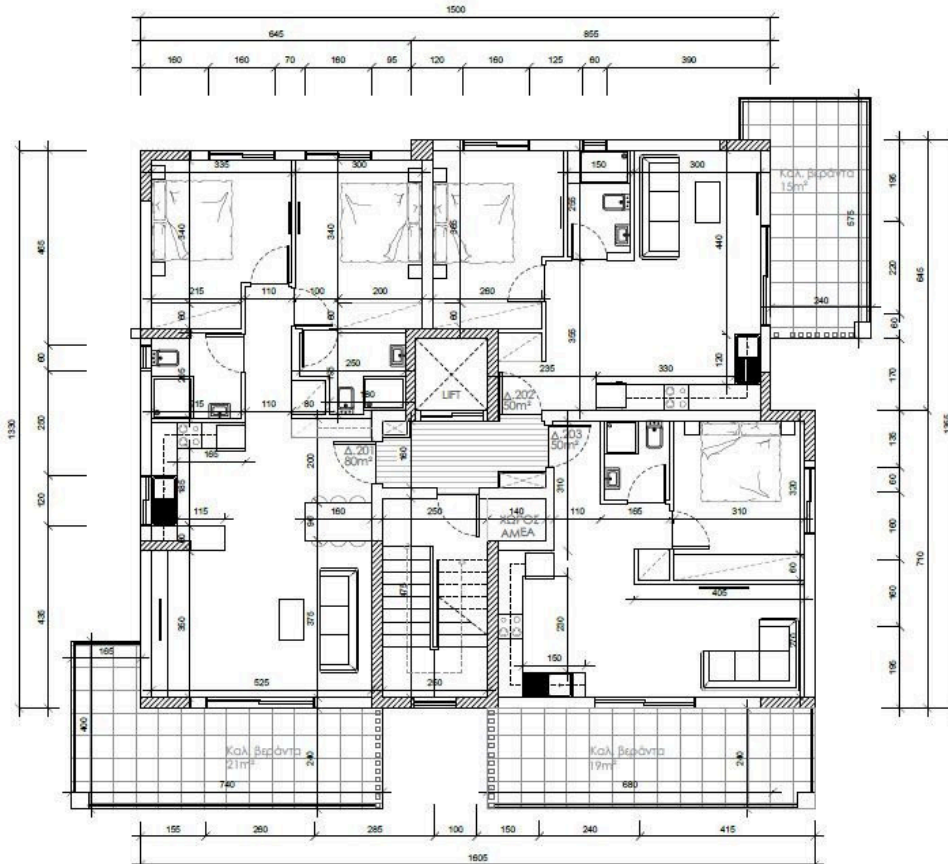
Petrou Kai Pavlou boasts a vibrant atmosphere, with a blend of local shops, cafes, and restaurants. Residents will appreciate the convenience of having essential amenities just a short distance away. Additionally, the location provides easy access to the highway, making commuting to nearby areas straightforward.

This apartment is designed with energy efficiency in mind, achieving an impressive Energy Efficiency rating of A. It is the perfect opportunity for those wanting a contemporary living space in a thriving neighborhood.

\*Location on map is indicative.



# Floor plans



# Additional information

## Facilities

Aircondition, Provision

Elevator

Heating, Provision

Parking, Covered

Solar photovoltaic panels

Storage

## Features

Ceramic tiles

Double glazing

Easy access to highway

Electric car charger, provision

Granite countertops

Near amenities

Open plan

Pressurized water system

Sound insulation

Thermal insulation

## Contact us



**Katerina Athini**

✉ [katerina@cyprusdomus.com](mailto:katerina@cyprusdomus.com)

