

#7257

New Apartment For Sale in Panthea Area.

📍 Panthea, Limassol

€195,000 +VAT





Overview

Specifications

Bedrooms



Bathrooms



Covered

 **52 m²**

Type

Apartment

Status

Off plan

Description

This well-designed residence offers an internal area of 52 m², consisting of one comfortable bedroom and one modern bathroom.

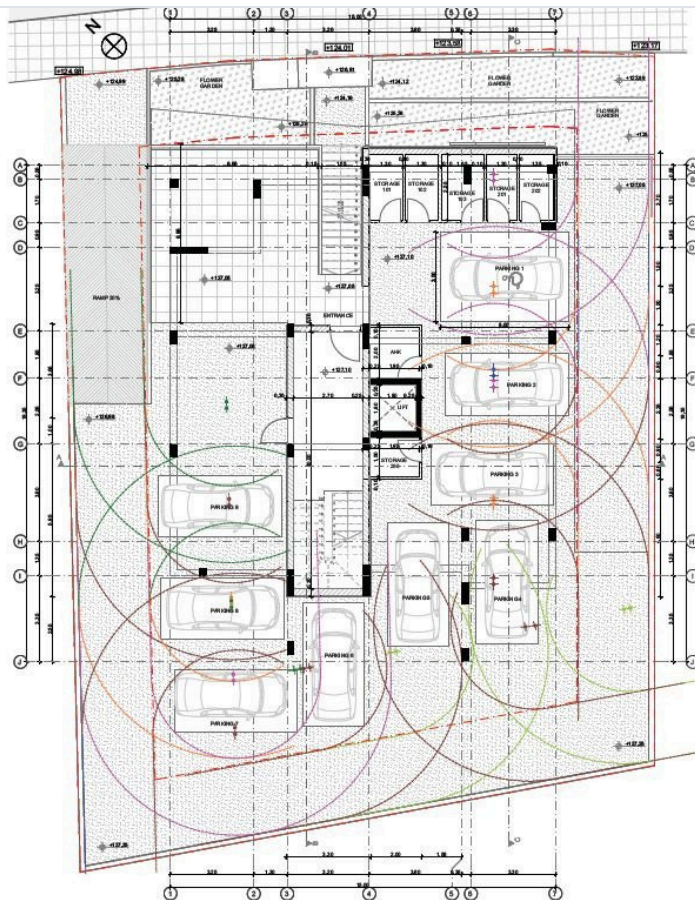
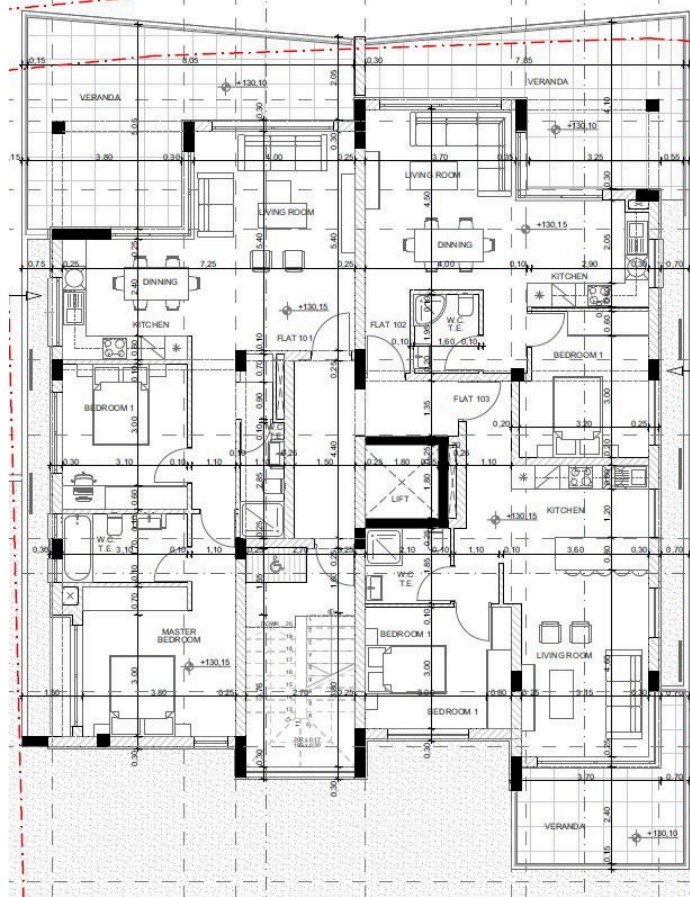
Situated on the first floor of a three-story building, this apartment provides a peaceful environment while still being close to all essential amenities.

The location offers easy access to the highway, ensuring quick connections to nearby towns and attractions.

*Location on map is indicative,



Floor plans



Additional information

Facilities

Parking, Covered

Storage

Features

Easy access to highway

Near amenities

Open plan

Contact us



Katerina Athini

✉ katerina@cyprusdomus.com

