

#7270

New Semi-Detached House For Sale in Ypsonas Area

📍 Ypsonas, Limassol

€385,000 +VAT





Overview

Specifications

Bedrooms

 3

Bathrooms

 2

Covered

 145.3 m²

Type **House**

Toilets **1**

Plot **253 m²**

Status **Off plan**

Description

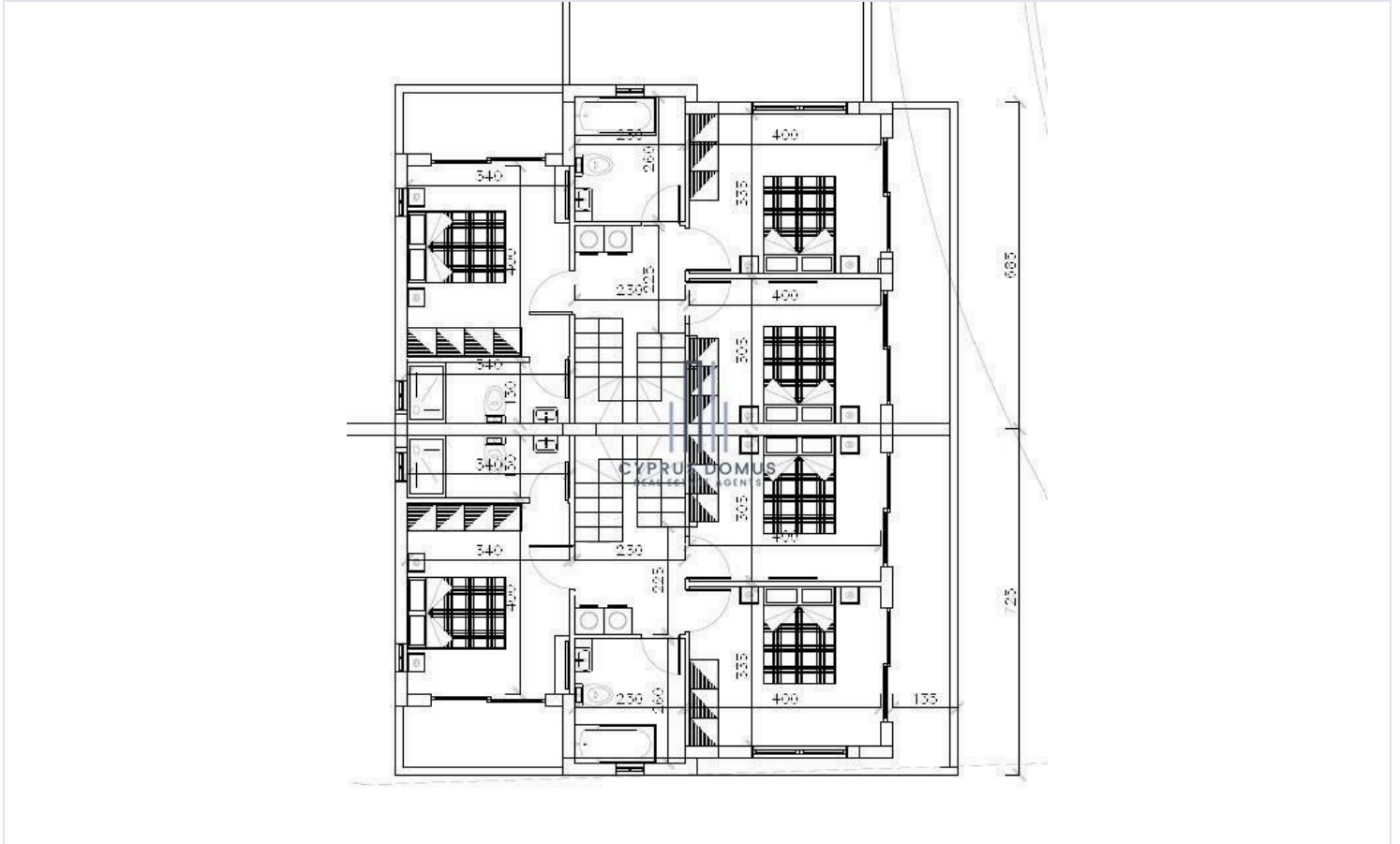
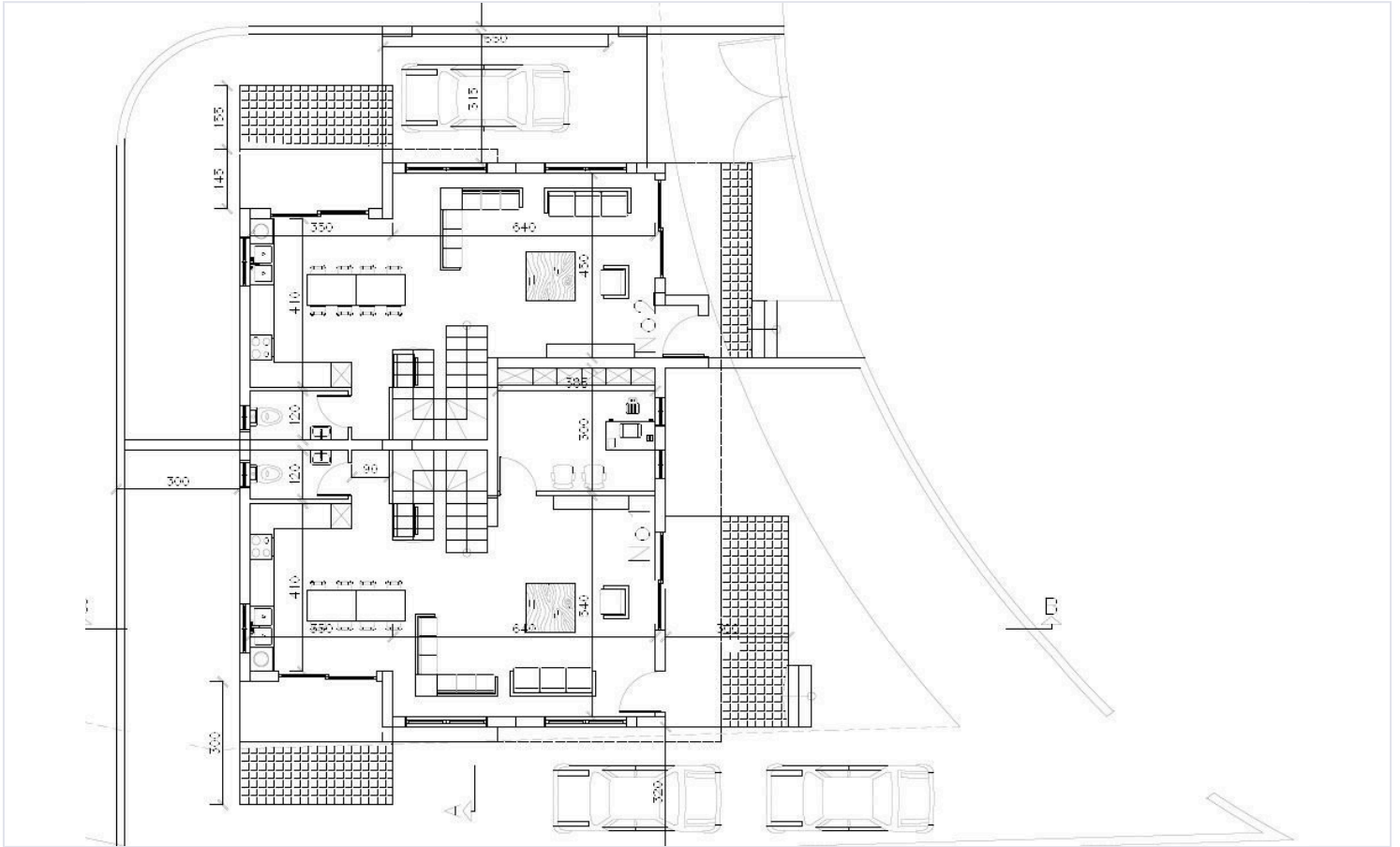
This spacious house boasts an internal area of 145.3 square meters, featuring three well-sized bedrooms that create a warm and inviting atmosphere. Two modern bathrooms and 1 guest w/c offer convenience for families or guests.

Residents enjoy easy access to local shops, schools, and parks, making it an ideal location for families and professionals alike. The proximity to the highway ensures smooth connections to other parts of the region, adding to the convenience of living in this vibrant area.

*Location on map is indicative.



Floor plans



Additional information

Facilities

Parking, Covered

Features

Easy access to highway

Easy access to main roads

En suite bathroom

Guest WC

Contact us



Katerina Athini

✉ katerina@cyprusdomus.com

