

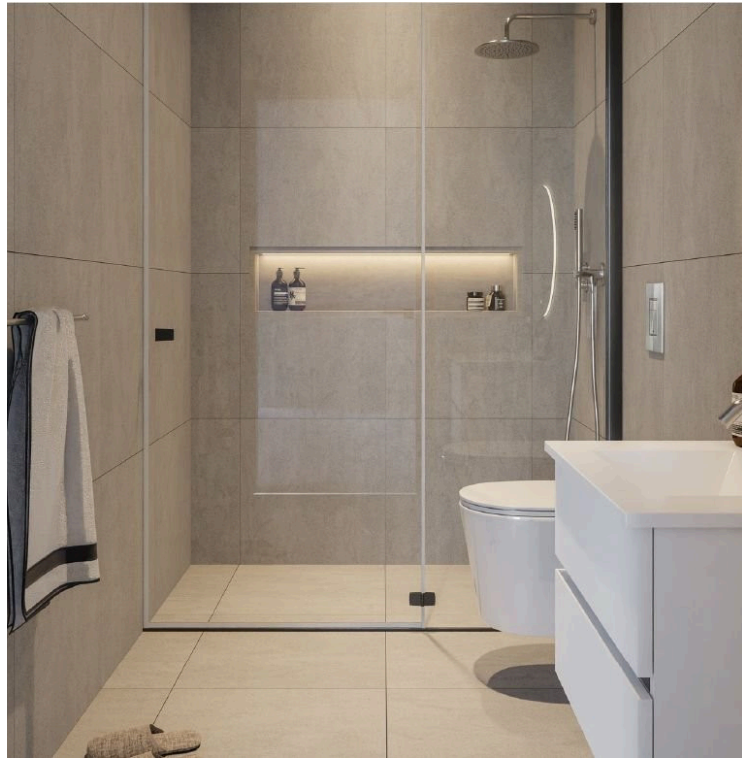
#7289

New modern Apartments For Sale in Historical Center Area

📍 Historical Center, Limassol

€200,000





Overview

Specifications

Bedrooms

 **Studio**

Bathrooms

 **1**

Covered

 **28 m²**

Type

Apartment

Energy efficiency rating

 **A**

Status

Off plan

Description

A premier investment opportunity located in the heart of Limassol's Historical Centre, this new project offers 17 modern and stylish apartments, featuring exclusively studio units tailored for contemporary living and strong rental demand.

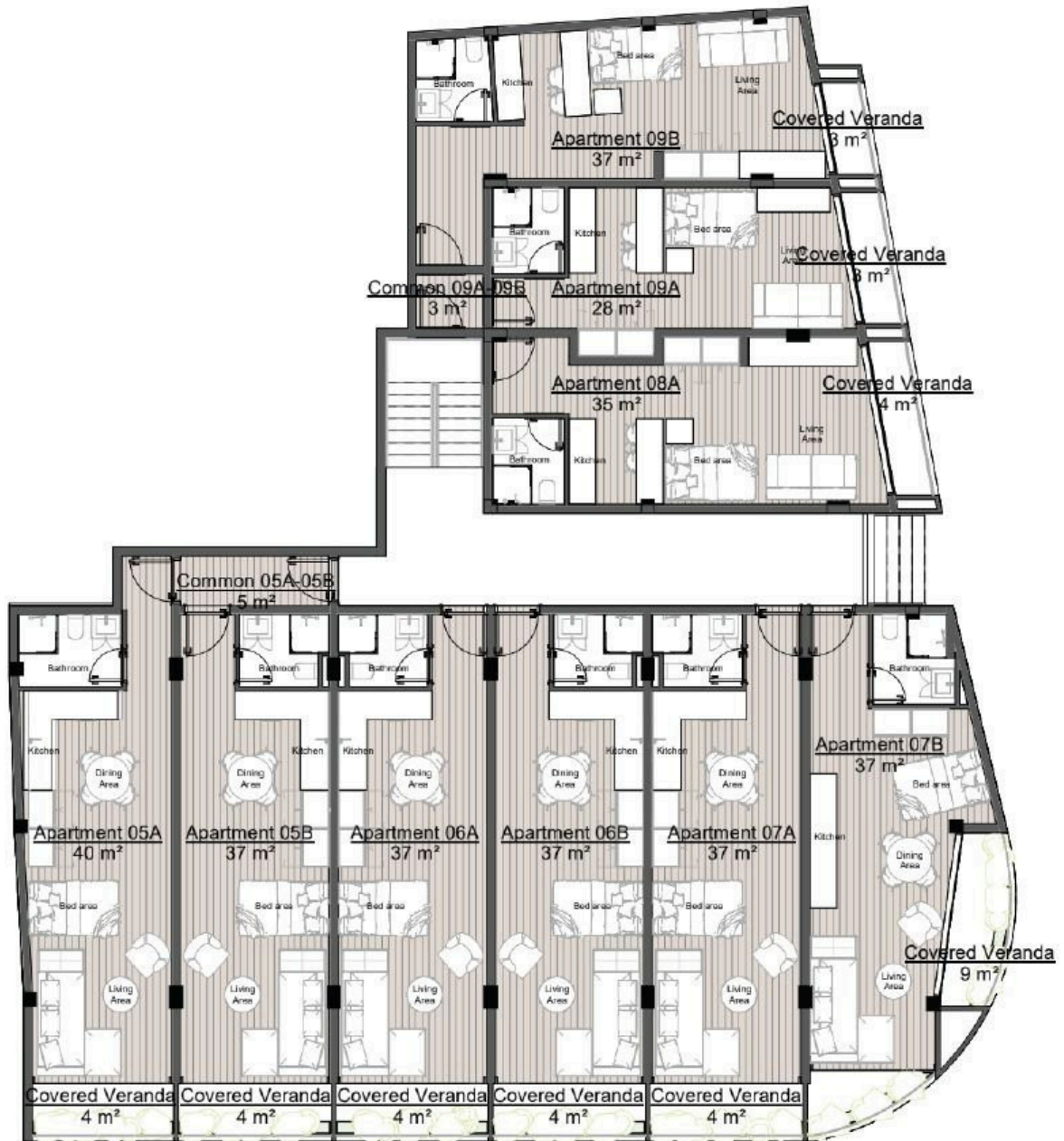
Optional private parking adds an extra layer of convenience for homeowners and tenants alike.

*No VAT is applicable to the above units as they are classified as resale apartments.

*Location on map is indicative.



Floor plans



Additional information

Features

Near amenities

Contact us



Katerina Athini

✉ katerina@cyprusdomus.com

