

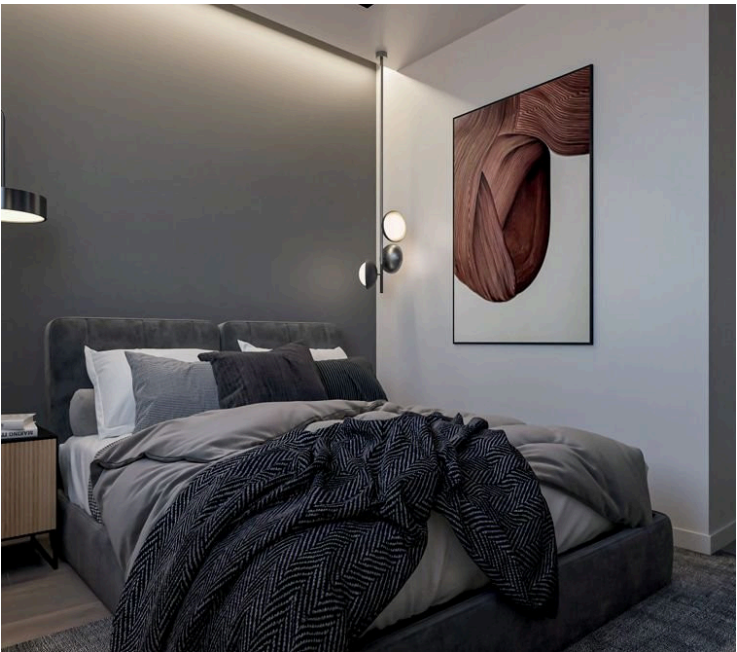
#7407

New Modern Design House In Germasogeia Area

📍 Germasogeia, Limassol

€698,425 +VAT





Overview

Specifications

Bedrooms



Bathrooms



Covered

 **143.4 m²**

Type

House

Plot

276 m²

Status

Under construction

Energy efficiency rating



Description

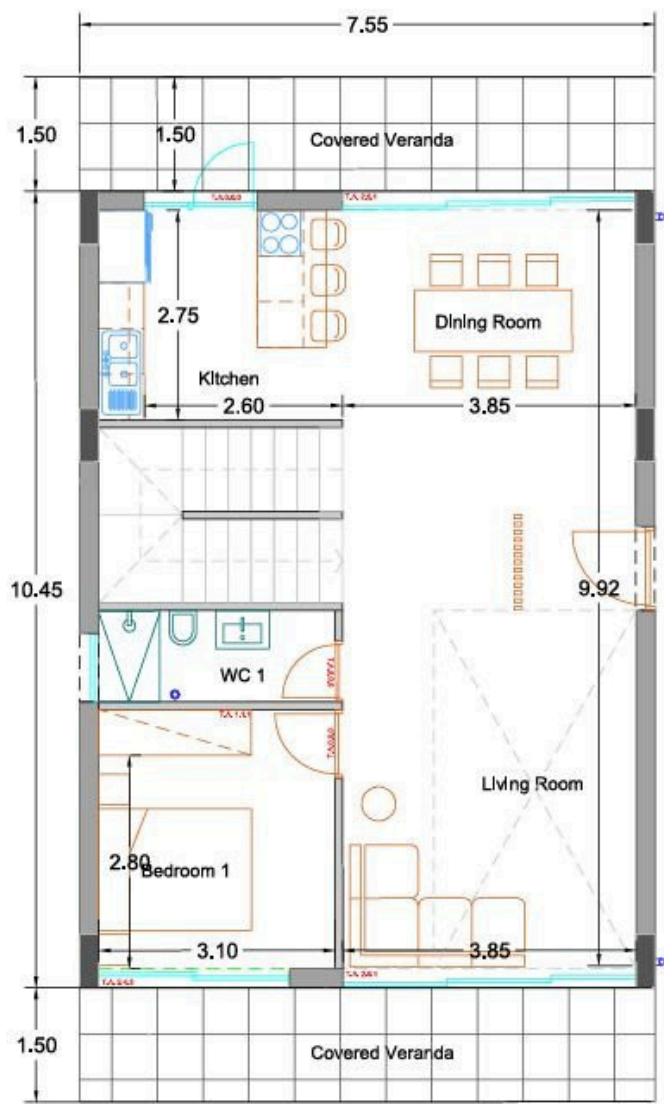
A residential development defined through affordable elegance and a contemporary inspired architecture.

A real estate development for those aspiring to live in one of the most cosmopolitan cities in the Mediterranean but at the same time enjoy a more relaxed and exclusive atmosphere at one of Limassol's upmarket locations.

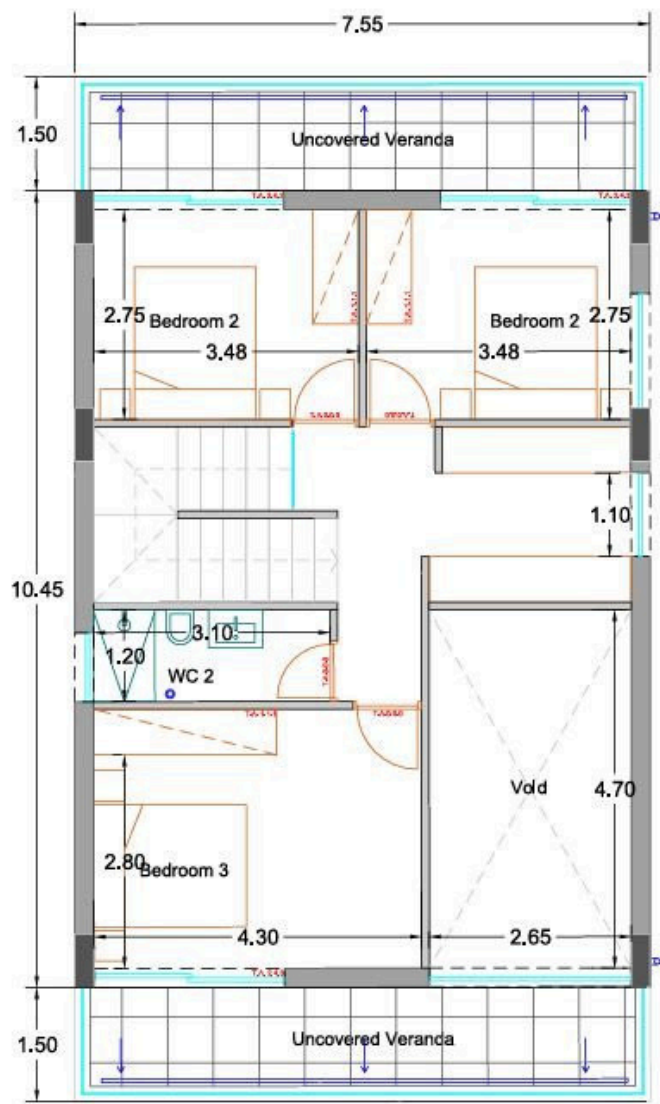
*Location on the map is indicative.



Floor plans



Ground Floor



1st Floor



Additional information

Facilities

Aircondition, Provision
Storage

Parking, Covered

Solar water heater

Features

City view

Combined kitchen and dining
area

Double glazing

En suite bathroom

Garden

Modern design

Near amenities

Next to green area

Quiet area

Roof garden

Contact us



Vassilis Papadopoulos

☎ (+357) 99662023

✉ info@cyprusdomus.com

