

#7417

New Houses For Sale in Palodeia Area

 Palodeia, Limassol

€580,000 +VAT





Overview

Specifications

Bedrooms

 3


Bathrooms

 2

Covered

 139 m²

Type	House
Toilets	1
Plot	694 m ²
Covered veranda	30 m ²

Basement	110 m ²
Status	Off plan
Energy efficiency rating	 A+

Description

This contemporary home offers a generous internal space of 139 m², and an open basement covered area of 110sqm, designed with comfort and style in mind.

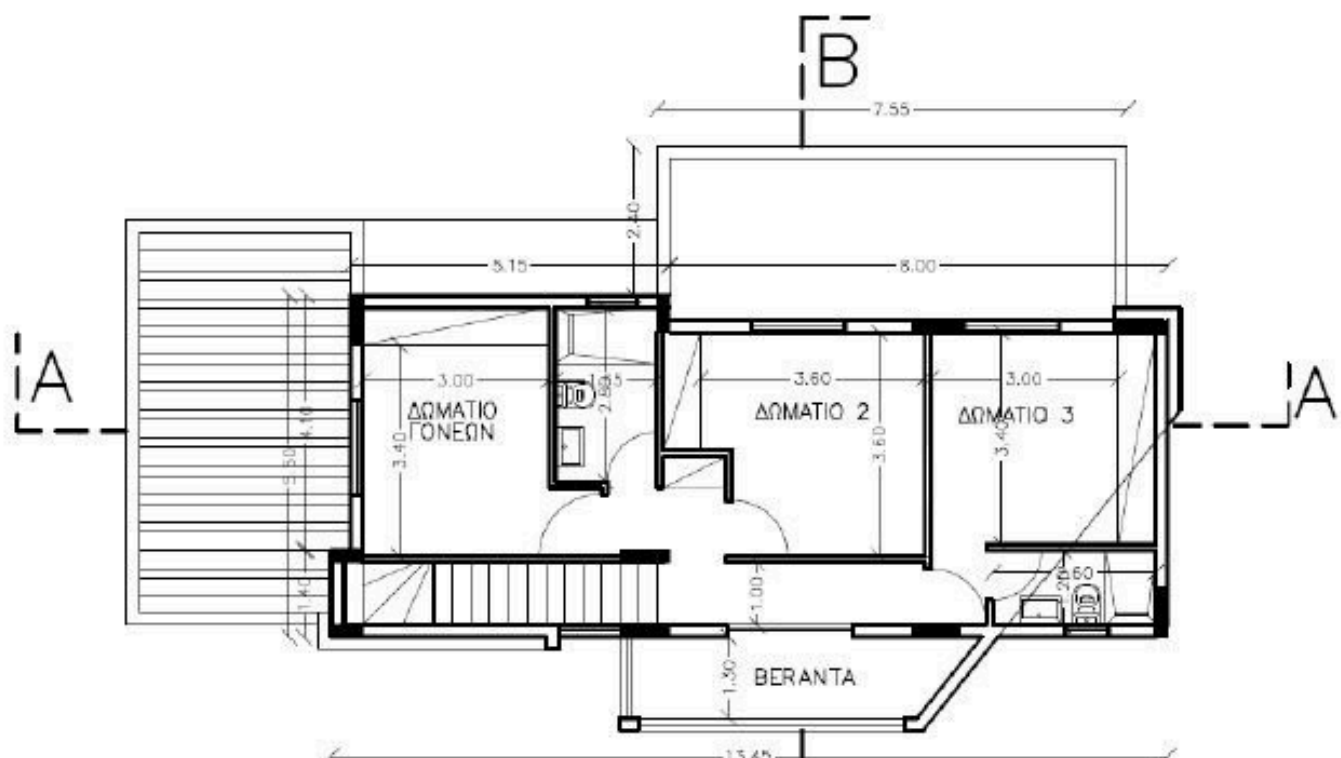
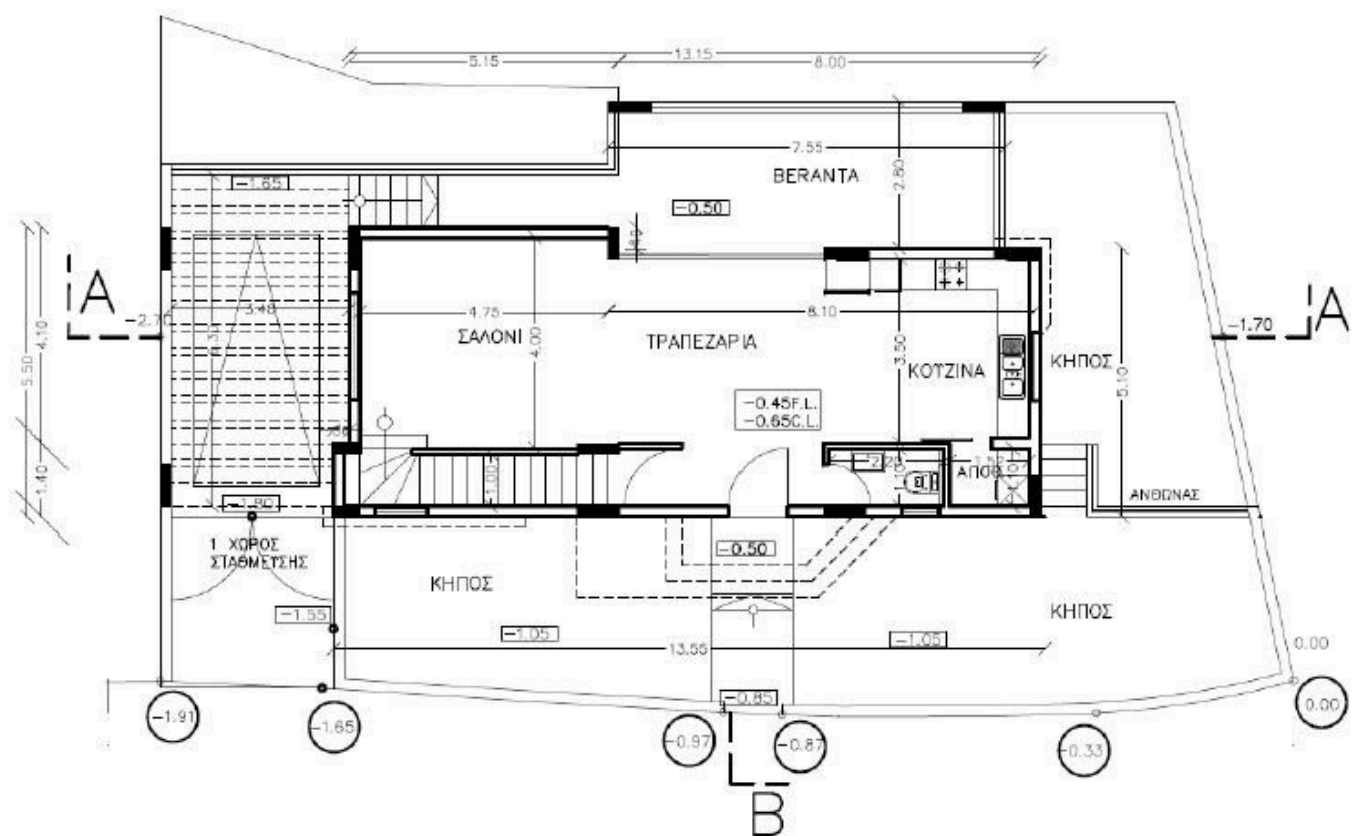
The property features three spacious bedrooms, perfect for families or those needing extra space. With two well-appointed bathrooms and one guest w/c, this home ensures convenience and privacy. Additionally, the house is situated on a large plot, providing ample outdoor space for activities, gardening, or simply enjoying the fresh air.

Energy efficiency is a key highlight of this property, rated A+, ensuring lower energy costs and a reduced carbon footprint.

Residents can enjoy a variety of local amenities, including shops, restaurants, and parks, all within close reach.

*Location on map is indicative.





Additional information

Facilities

Aircondition, Provision

Heating, Provision

Parking, Covered

Pool, Optional

Solar water heater

Storage

Features

Ceramic tiles

Double glazing

Garden

Guest WC

Pressurized water system

Thermal insulation

Contact us



Katerina Athini

✉ katerina@cyprusdomus.com

