

#7419

New Houses For Sale in Palodeia Area

📍 Palodeia, Limassol

€680,000 +VAT





Overview

Specifications

Bedrooms

 3

Bathrooms

 2

Covered

 139 m²

Type	House
Toilets	1
Plot	694 m²

Status	Off plan
Energy efficiency rating	 A+

Description

This contemporary home offers a generous internal space of 139 m², and an open basement covered area of 110sqm, designed with comfort and style in mind.

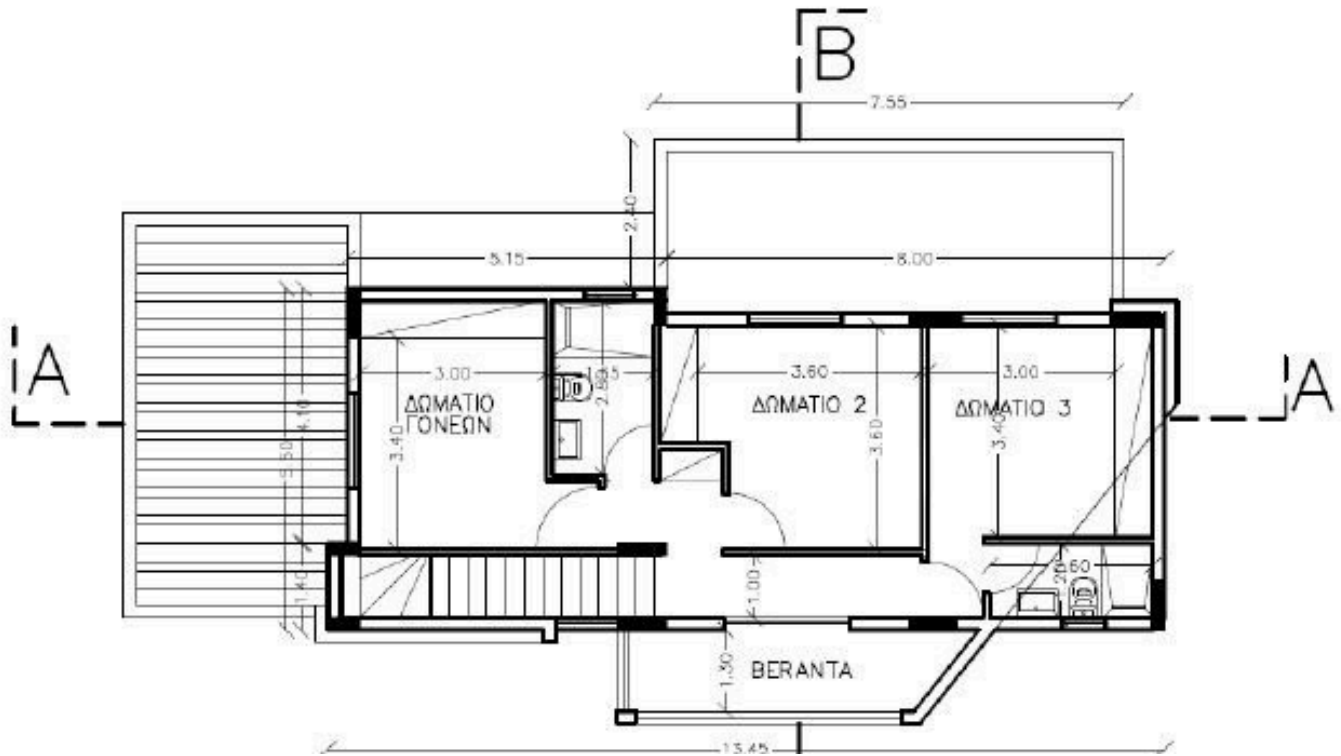
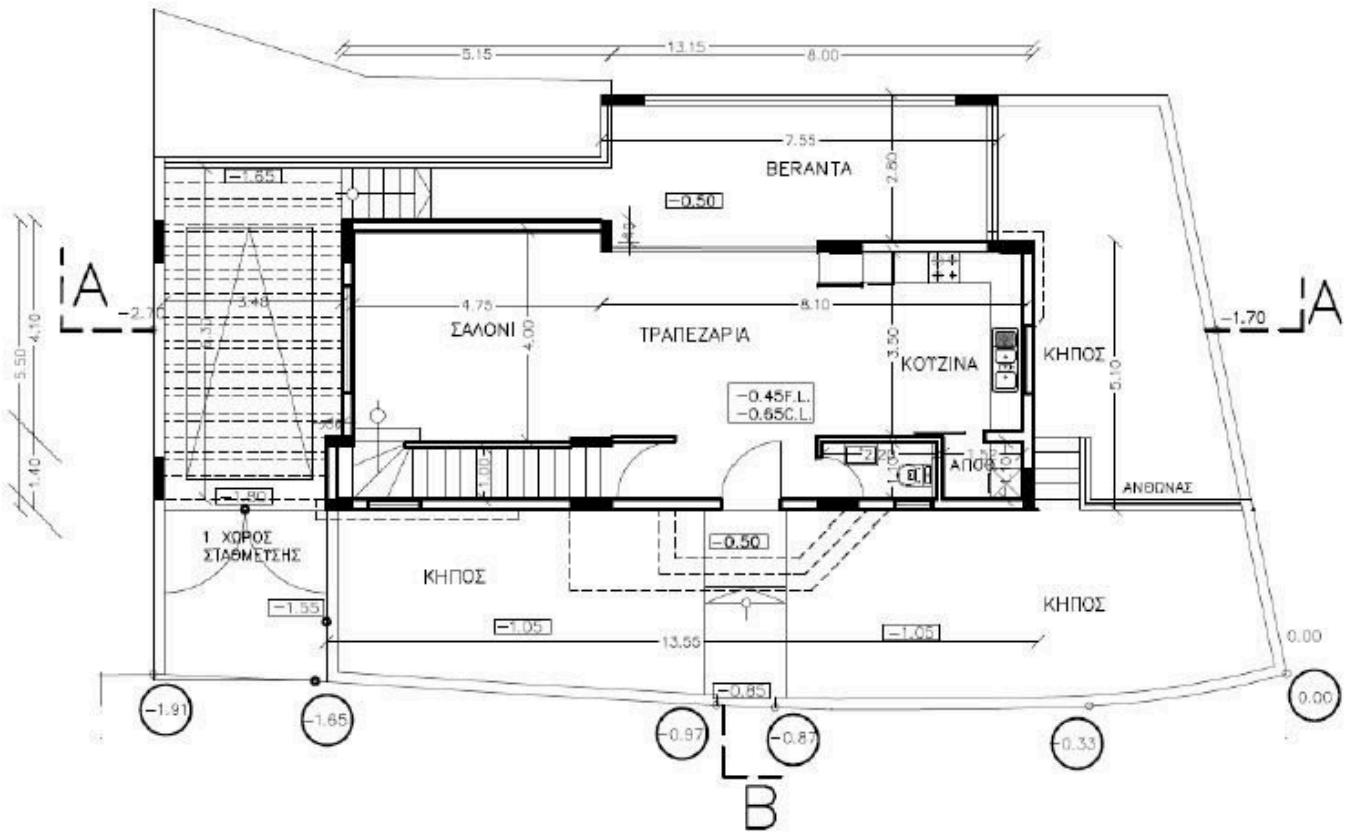
The home's design emphasizes energy efficiency with an impressive A+ rating, ensuring lower energy bills and a smaller carbon footprint.

The property sits on a large plot, offering plenty of outdoor space for relaxation and entertainment. Enjoy the luxury of underfloor heating throughout the house, providing a cozy atmosphere in all seasons. The included jacuzzi is ideal for unwinding after a long day, creating your own personal oasis.

*Location on map is indicative.



Floor plans



Additional information

Facilities

Aircondition, Split system

Heating, Underfloor

Parking, Covered

Pool, Optional

Solar photovoltaic panels

Solar water heater

Storage

Features

Alarm system

Barbeque

CCTV

Ceramic tiles

Double glazing

Garden

Guest WC

Jacuzzi

Pressurized water system

Shutters

Smart home automation

Thermal insulation

Water softener

Contact us



Katerina Athini

✉ katerina@cyprusdomus.com

