

#7431

New Modern Commercial Building For Sale in Petrou & Pavlou area

 Petrou Kai Pavlou, Limassol

€4,700,000 +VAT






Overview

Specifications

Covered

 905 m²

Type	Commercial Building	Status	Under construction
Plot	527 m ²	Energy efficiency rating	 A+

Description

For sale is an exciting opportunity to invest in this spacious commercial building currently under construction. With an impressive internal space of 905 square meters, this property is designed to meet the needs of various businesses and can be customized to suit your specific requirements.

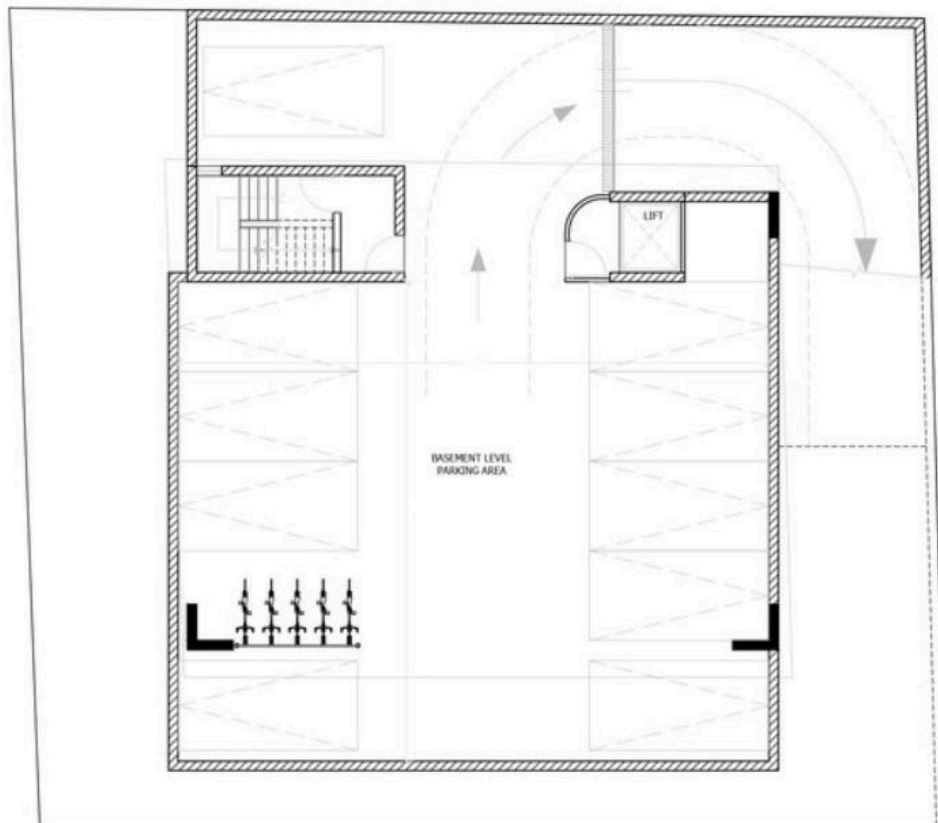
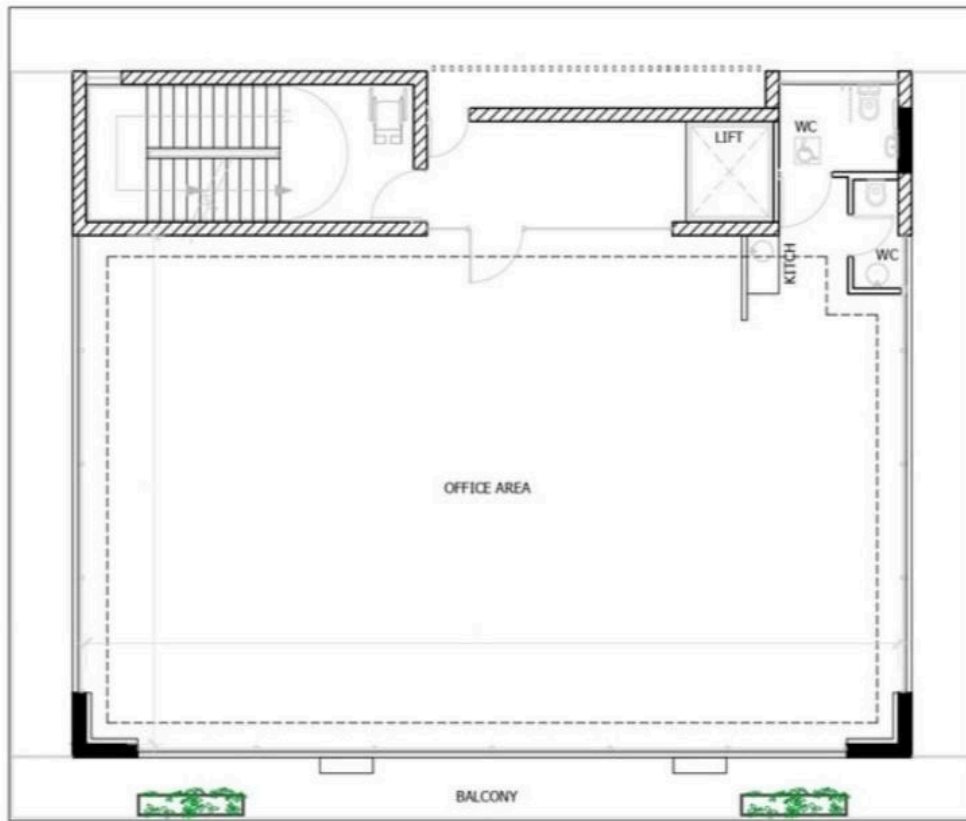
The building is situated on a large plot, providing ample outdoor space for parking or future expansion. It boasts an energy efficiency rating of A+, ensuring significant cost savings on utilities while promoting environmentally friendly practices.

Location is key for any commercial venture, and this property is strategically close to the highway, making it easy to reach for both customers and suppliers. With stunning sea views, the building offers a unique and attractive setting that can enhance your business's appeal.

*Location on map is indicative.



Floor plans



Additional information

Facilities

Elevator

Parking, Covered

Solar photovoltaic panels

Features

Alarm system

Double glazing

Easy access to highway

Easy access to main roads

Lobby

Roof garden

Sea view

Contact us



Katerina Athini

✉ katerina@cyprusdomus.com

