

#7540

New Apartments At Panthea Area

 Panthea, Limassol


€195,000 +VAT





Overview

Specifications

Bedrooms	Bathrooms	Covered
 1	 1	 72 m ²
Type	Apartment	
Status	Off plan	

Description

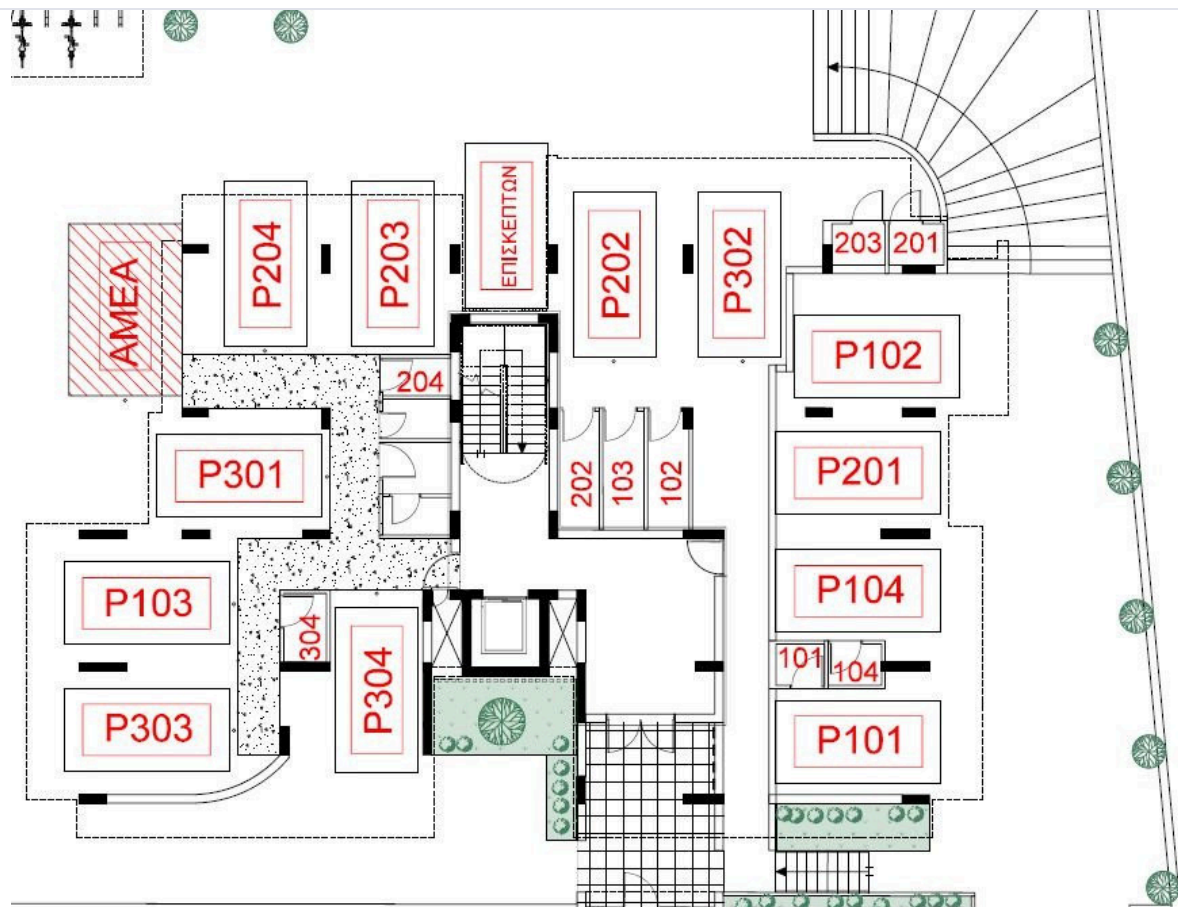
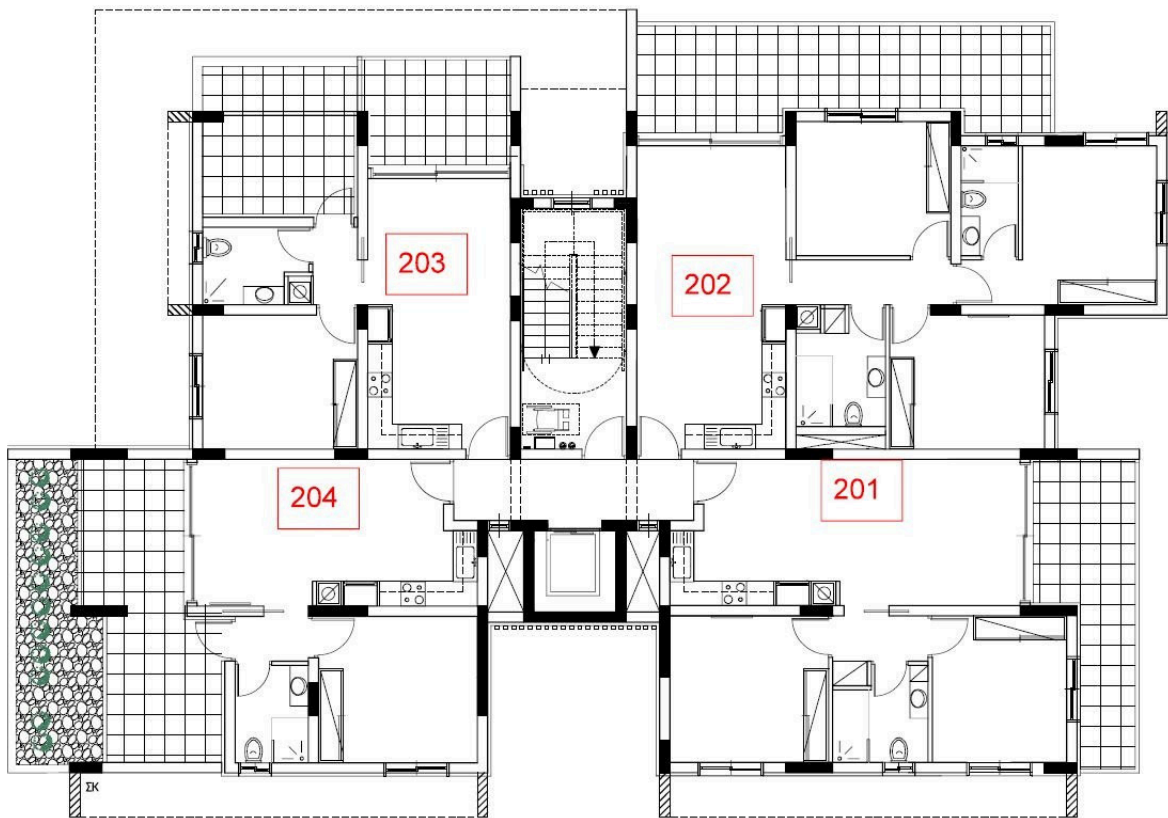
The apartment consists of an open plan kitchen, dining and living area, 1 bedroom and 1 bathroom.

It has covered parking and storage room.

*Location on the map is indicative.



Floor plans



Additional information

Facilities

Parking, Covered

Storage

Contact us



Vassilis Papadopoulos

☎ (+357) 99662023

✉ info@cyprusdomus.com

