

#7690

New Bungalow With Swimming Pool in Panthea Area.

 Panthea, Limassol

€890,000 +VAT





Overview

Specifications

Bedrooms



3

Bathrooms



2

Covered



166 m²

Type

House

Toilets

1

Plot

1148 m²

Status

Under construction

Energy efficiency rating

 A+

Description

This spacious property offers an internal living space of 166 m², providing ample room for modern living. With three comfortable bedrooms, two bathrooms and one guest w/c, this home is ideal for families or anyone seeking extra space.

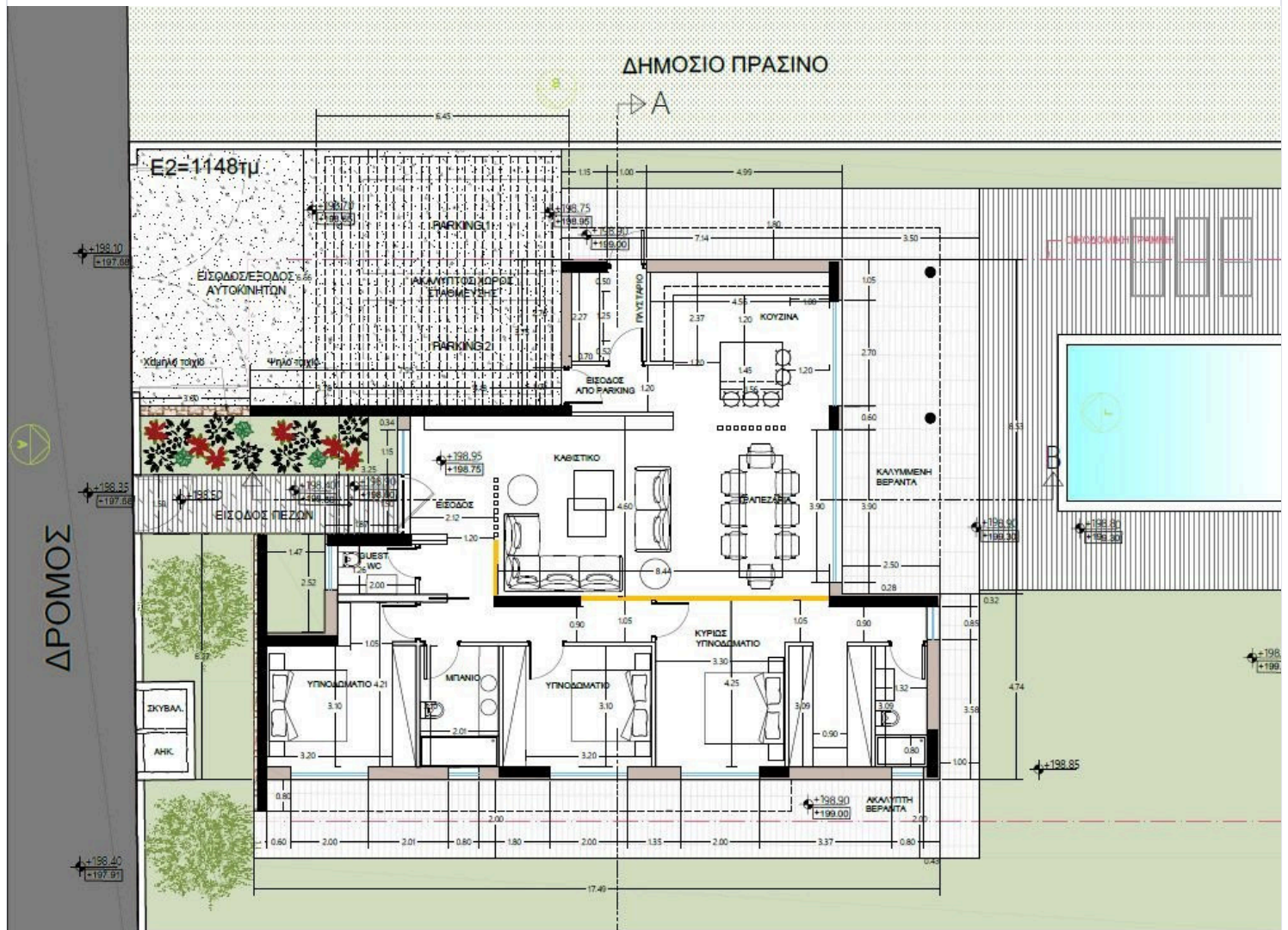
Designed with energy efficiency in mind, this home boasts an impressive A+ energy rating. Inside, you will appreciate the comfort provided by a central AC system and underfloor heating. The property is situated on a large plot that features a private swimming pool, perfect for relaxation and entertaining.

Panthea is a charming neighborhood known for its peaceful atmosphere and stunning views. It offers a perfect blend of tranquility and convenience, with easy access to major highways and local amenities. Residents can enjoy nearby shopping, dining, and recreational options, making it a convenient choice for everyday living.

*Location on map is indicative.



ΔΡΟΜΟΣ



Additional information

Facilities

Aircondition, Central system

Heating, Underfloor

Parking, Covered

Pool, Private

Solar photovoltaic panels
(provision)

Features

Alarm system

Double glazing

Easy access to highway

En suite bathroom

Granite countertops

Guest WC

Near amenities

Quiet area

Shutters, electric (provision)

Contact us



Katerina Athini

✉ katerina@cyprusdomus.com

