

#7711

New Semi Detached House For Sale in Parekkklisia Area

 Parekkklisia, Limassol

€360,000 +VAT





Overview

Specifications

Bedrooms

 3

Bathrooms

 2

Covered

 117.45 m²

Type

House

Toilets

1

Plot

250 m²

Status

Off plan

Energy efficiency rating

 A

Description

This stunning house, currently under construction, offers a modern layout designed for comfortable living. With an internal space of 117.45 square meters, this home features three spacious bedrooms, perfect for families or those needing extra room for guests or a home office.

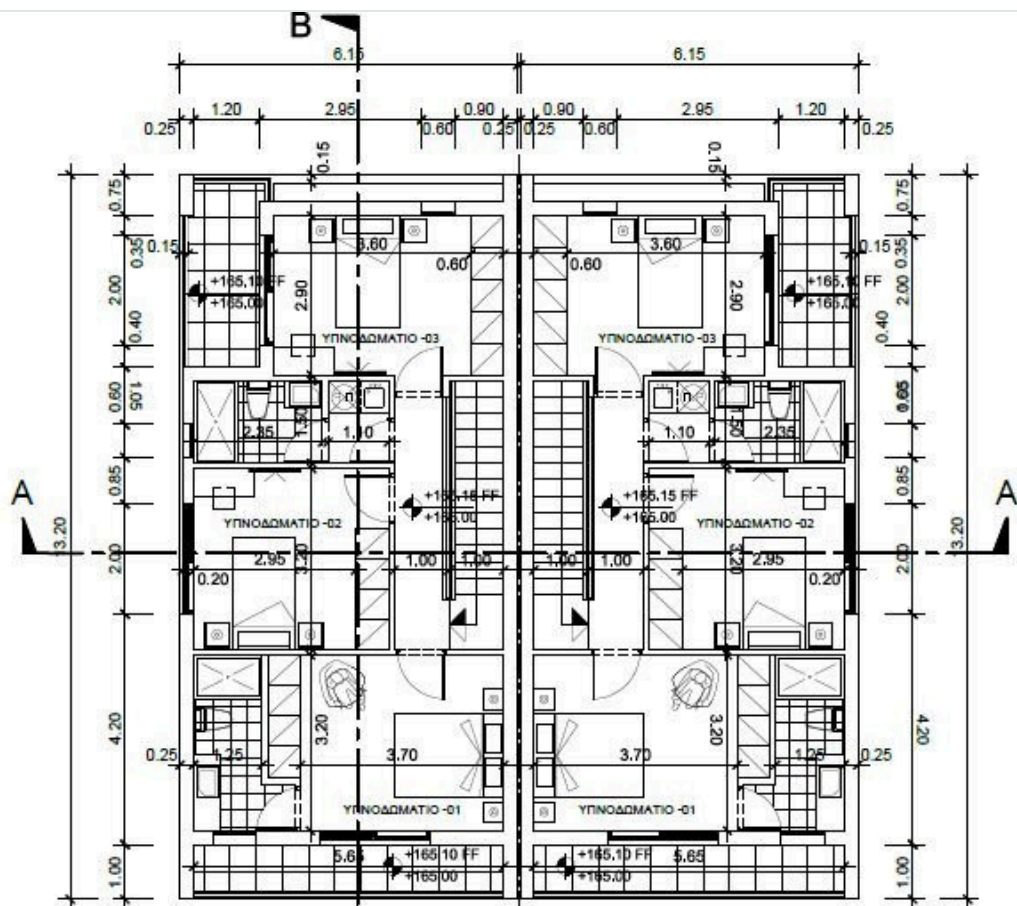
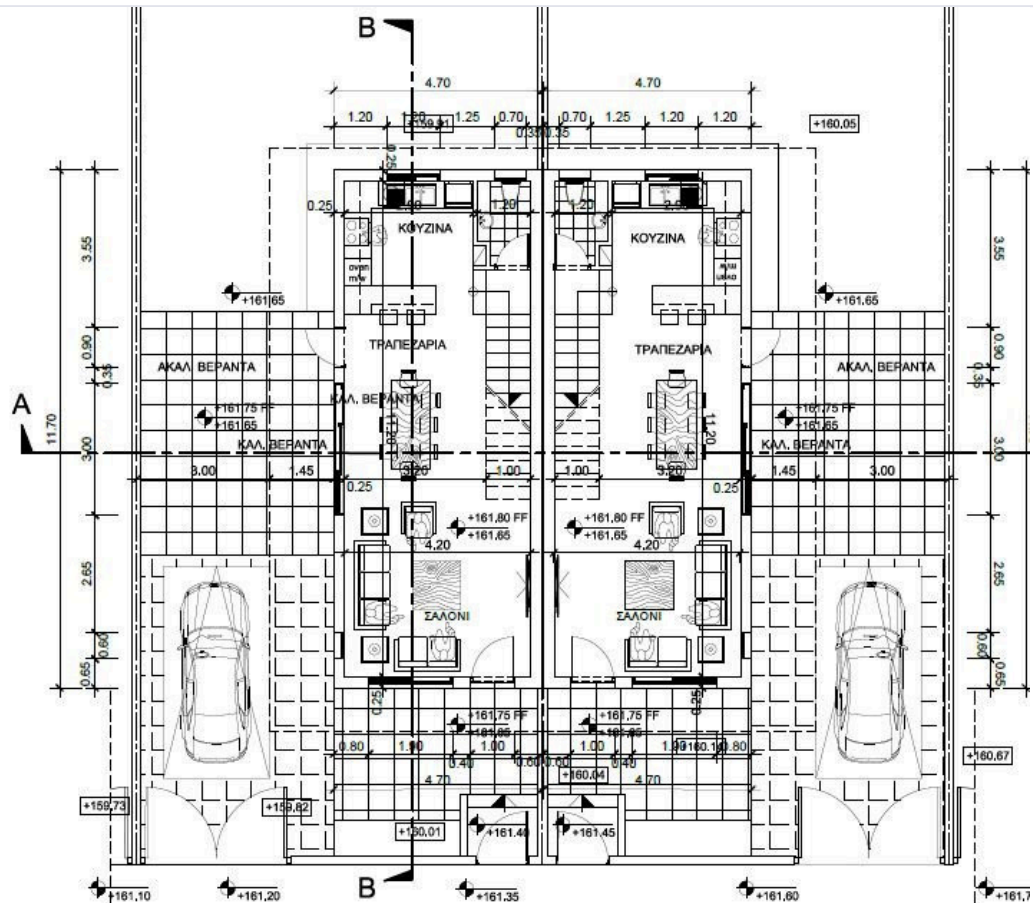
Located in the picturesque area of Parekklesia, residents can enjoy a serene atmosphere while still being close to essential amenities. Known for its beautiful landscapes, Parekklesia offers a blend of nature and convenience.

The house is built with energy efficiency in mind, achieving an impressive Energy Efficiency rating of A. This not only benefits the environment but also helps to lower utility costs, providing peace of mind for future homeowners.

*Location on map is indicative.



Floor plans



Additional information

Facilities

Parking, Covered

Solar photovoltaic panels

Solar water heater

Features

Balcony

Double glazing

Garden

Thermal insulation

Contact us



Katerina Athini

✉ katerina@cyprusdomus.com

