

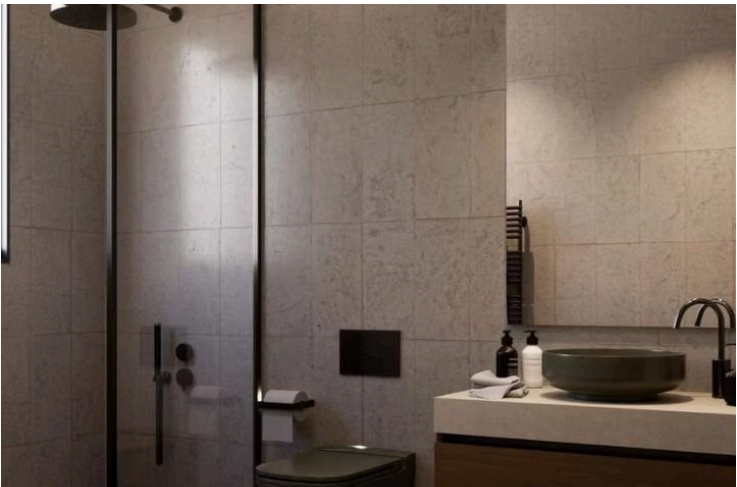
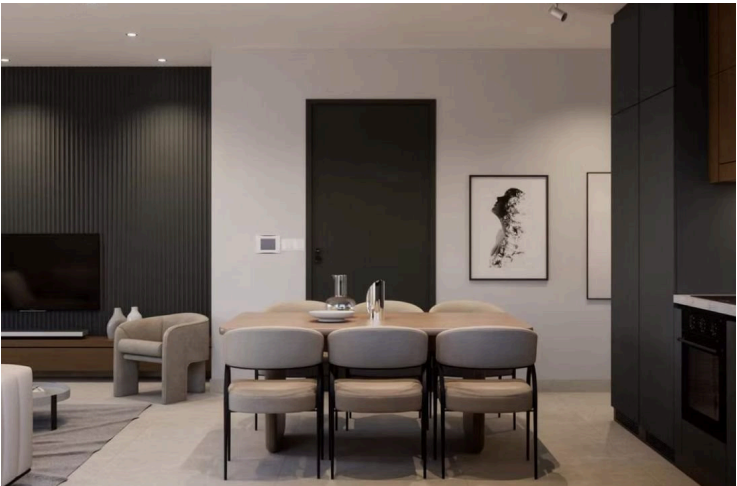
#7737

New Apartments For Sale in Agios Ioannis Area.

📍 Agios Ioannis, Limassol

€400,000 +VAT





Overview

Specifications

Bedrooms

 2

Bathrooms

 2

Covered

 84.45 m²

Type

Apartment

Status

Off plan

Energy efficiency rating

 **A**

Description

This spacious apartment boasts an internal area of 84.45 m² and features two comfortable bedrooms, each providing a cozy retreat. With two modern bathrooms, convenience and privacy are prioritized, making it perfect for families or those who enjoy entertaining guests.

Residents enjoy easy access to a variety of amenities, including shops, cafes, and restaurants, making it an ideal spot for both relaxation and socializing.

Designed with energy efficiency in mind, this apartment boasts an impressive Energy Efficiency rating of A, ensuring lower energy bills and a smaller carbon footprint. The modern finishes and layout provide a perfect canvas for your dream home.

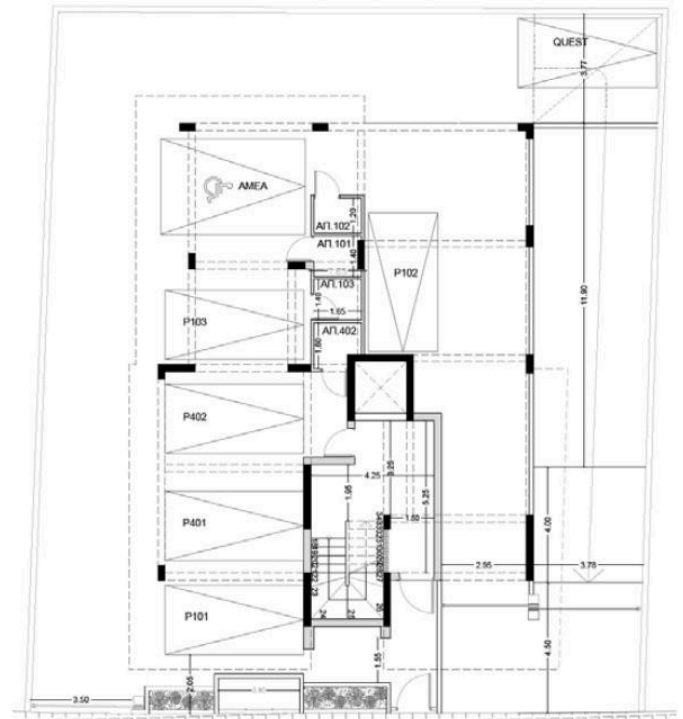
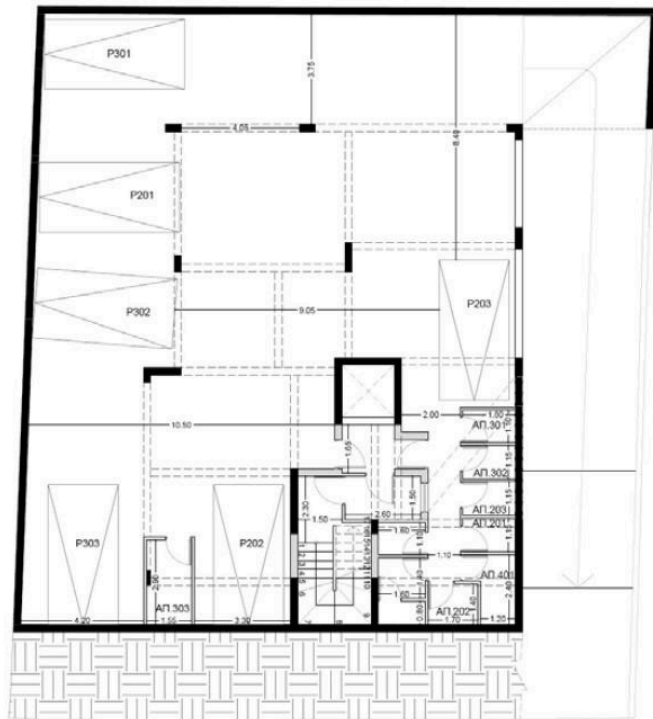
Photovoltaic systems in public areas, which further reduce energy consumption.

*Location on map is indicative.



The floor plan illustrates a three-story building with the following details:

- Floor 201:** Located at the top, it features a large living area with a circular table and chairs, a dining area, and a kitchen. Dimensions include 2.25, 6.30, 2.95, 3.90, 1.30, 1.40, 1.70, 3.20, 4.00, 1.80, 1.70, 3.30, 3.30, 1.10, 1.20, 1.45, 5.00, 3.70, 1.80, and 1.95.
- Floor 202:** Located in the middle, it contains a central staircase and elevator core. Dimensions include 6.2, 6.1, 6.3, 6.4, 2.50, 1.85, 1.50, 1.25, 1.80, 1.80, 1.10, 1.10, 3.20, 1.10, 1.50, 2.10, 3.40, 3.30, 3.20, 3.15, 2.70, 1.60, 0.90, 3.90, 6.35, 4.70, 3.10, 6.10, and 1.2.
- Floor 203:** Located at the bottom, it shows a large open area with a circular table and chairs, a dining area, and a kitchen. Dimensions include 2.50, 1.85, 1.50, 1.25, 1.80, 1.80, 1.10, 1.10, 3.20, 1.10, 1.50, 2.10, 3.40, 3.30, 3.20, 3.15, 2.70, 1.60, 0.90, 3.90, 6.35, 4.70, 3.10, 6.10, and 1.2.



Additional information

Facilities

Parking, Covered

Solar photovoltaic panels

Solar water heater

Storage

Features

Double glazing

Electric car charger

High ceilings

Near amenities

Thermal insulation

Contact us



Katerina Athini

✉ katerina@cyprusdomus.com

