

#7787

New Semi-Detached Maisonettes for sale in Parekkklisia area.

📍 Parekkklisia, Limassol

€360,000 +VAT



Overview

Specifications

Bedrooms

 3

Bathrooms

 2

Covered

 95 m²

Type	House
Toilets	1
Plot	285 m ²

Status	Under construction
Energy efficiency rating	 A

Description

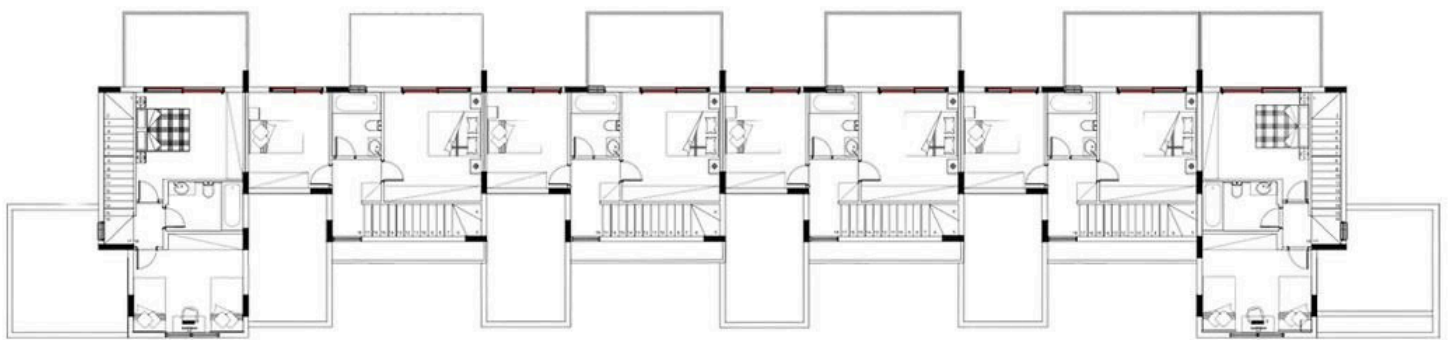
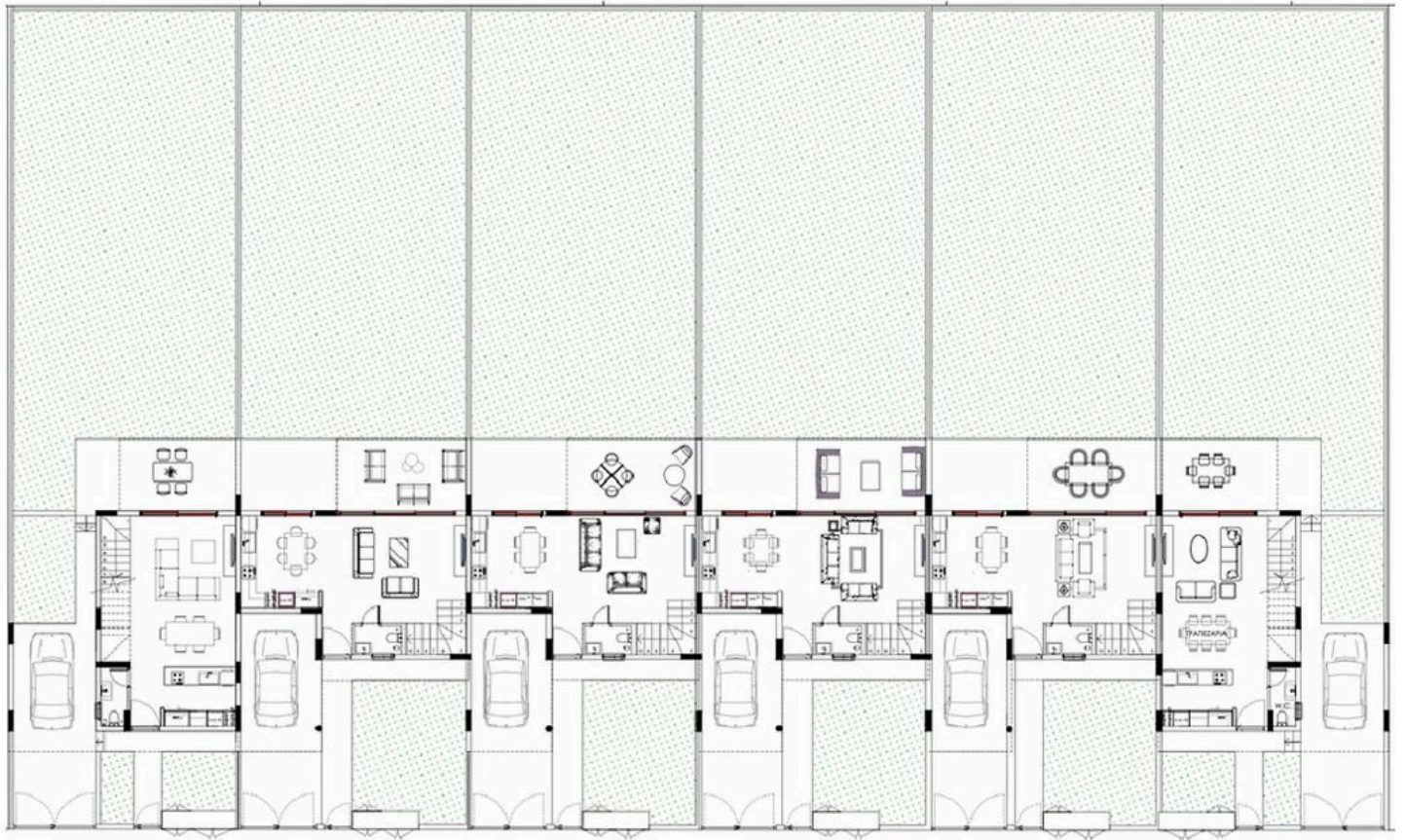
This residential complex has as a primary aim to provide homeowners with a unique opportunity to seamlessly blend a serene, countryside, family-oriented lifestyle with the energetic vibrancy of modern city living.

Nestled amidst the picturesque surroundings, this project seamlessly combines modern convenience with tranquility

*Location on map is indicative.



Floor plans



Additional information

Facilities

Aircondition, Provision

Parking, Covered

Solar photovoltaic panels

Features

Easy access to highway

Granite countertops

Marble stairs

Thermal insulation

Contact us



Katerina Athini

✉ katerina@cyprusdomus.com

