

#7793

New Detached House For Sale in Kolossi Area.

 Kolossi, Limassol

€395,000 +VAT





Overview

Specifications

Bedrooms



3

Bathrooms



2

Covered

153 m²

Type

House

Toilets

1

Plot

270 m²

Status

Under construction

Energy efficiency rating



Description

This is a beautifully designed house, offering a modern living experience in the charming area of Kolossi. This property boasts an internal space of 153 m², providing ample room for comfortable living.

The house features three spacious bedrooms, two bathrooms and 1 guest w/c, perfect for families or those who desire extra space for guests. With an energy efficiency rating of A, this home is built with sustainability in mind, helping you save on energy costs.

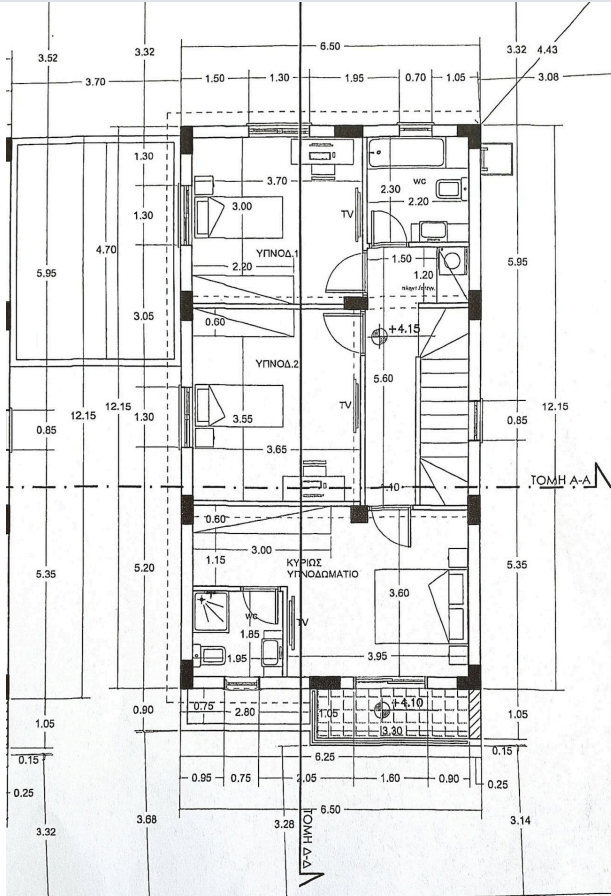
This area combines the tranquility of suburban living with easy access to local amenities, including shops, cafes, and parks.

*Location on map is indicative.



This architectural floor plan depicts a single-story residence with a carport and a garden. The layout includes the following rooms and features:

- Carport:** Located on the left side, it contains two cars. The area is labeled "Συρόμενη καροτσόπορτα" (sliding carport door).
- Entrance:** The "ΕΙΣΟΔΟΣ" (entrance) is at the bottom left, featuring a small porch with a door at +0.85 and a window at +0.75.
- Living Room:** The "ΣΑΛΟΝΙ" (living room) is at the bottom right, containing a sofa and armchairs. It has a door at +0.85 and a window at +0.75.
- Dining Room:** The "ΚΑΘΗΜΕΡΙΝΟ" (dining room) is in the center, featuring a table and chairs. It has a door at +0.85 and a window at +0.75.
- Kitchen:** The "ΚΟΥζίνα" (kitchen) is at the top right, containing a sink, stove, and refrigerator. It has a door at +0.85 and a window at +0.75.
- Bathroom:** The "ΤΟΥΑΛΕΤΑ" (bathroom) is at the top left, containing a toilet and sink. It has a door at +0.85 and a window at +0.75.
- Staircase:** The "ΛΕΒΗΤΟΣΤΑΣΙΑ" (staircase) is in the center, leading to the upper floor. It has a door at +0.85 and a window at +0.75.
- Storage:** The "ΑΠΟΘΗΚΗ" (storage room) is at the bottom right, containing a table and chairs. It has a door at +0.85 and a window at +0.75.
- Exterior:** The garden area is on the right, featuring a "ΤΟΜΗ Α-Α" (section A-A) and a "ΤΟΜΗ Β-Β" (section B-B). It includes a "ΣΥΝΤΗΡΗΤΗΡΙΟ" (fountain) and a "ΠΕΡΙΒΛΕΤΟ" (garden).
- Dimensions:** The plan includes various dimensions for rooms and overall sections. For example, the living room is 3.80m wide and 3.60m deep. The kitchen is 2.85m wide and 2.55m deep. The dining room is 3.55m wide and 3.05m deep. The carport is 3.70m wide and 2.15m deep.
- Level Markers:** The plan shows elevation markers such as +0.85, +0.75, +0.95, +2.15, +2.10, +0.40, +0.15, and +0.80.



Additional information

Facilities

Aircondition, Provision

Heating, Provision

Solar photovoltaic panels

Features

Double glazing

Shutters, electric (provision)

Thermal insulation

Contact us



Katerina Athini

✉ katerina@cyprusdomus.com

