

#7825

New Modern Apartments For Sale in Panthea Area.

 Panthea, Limassol

€360,000 +VAT





Overview

Specifications

Bedrooms



2

Bathrooms



2

Covered



77 m²

Type

Apartment

Status

Under construction

Energy efficiency rating



Description

Introducing a modern apartment for sale in the desirable area of Panthea. This unit boasts an internal space of 77 m², making it perfect for those seeking comfort and style. The apartment features two spacious bedrooms and two well-appointed bathrooms.

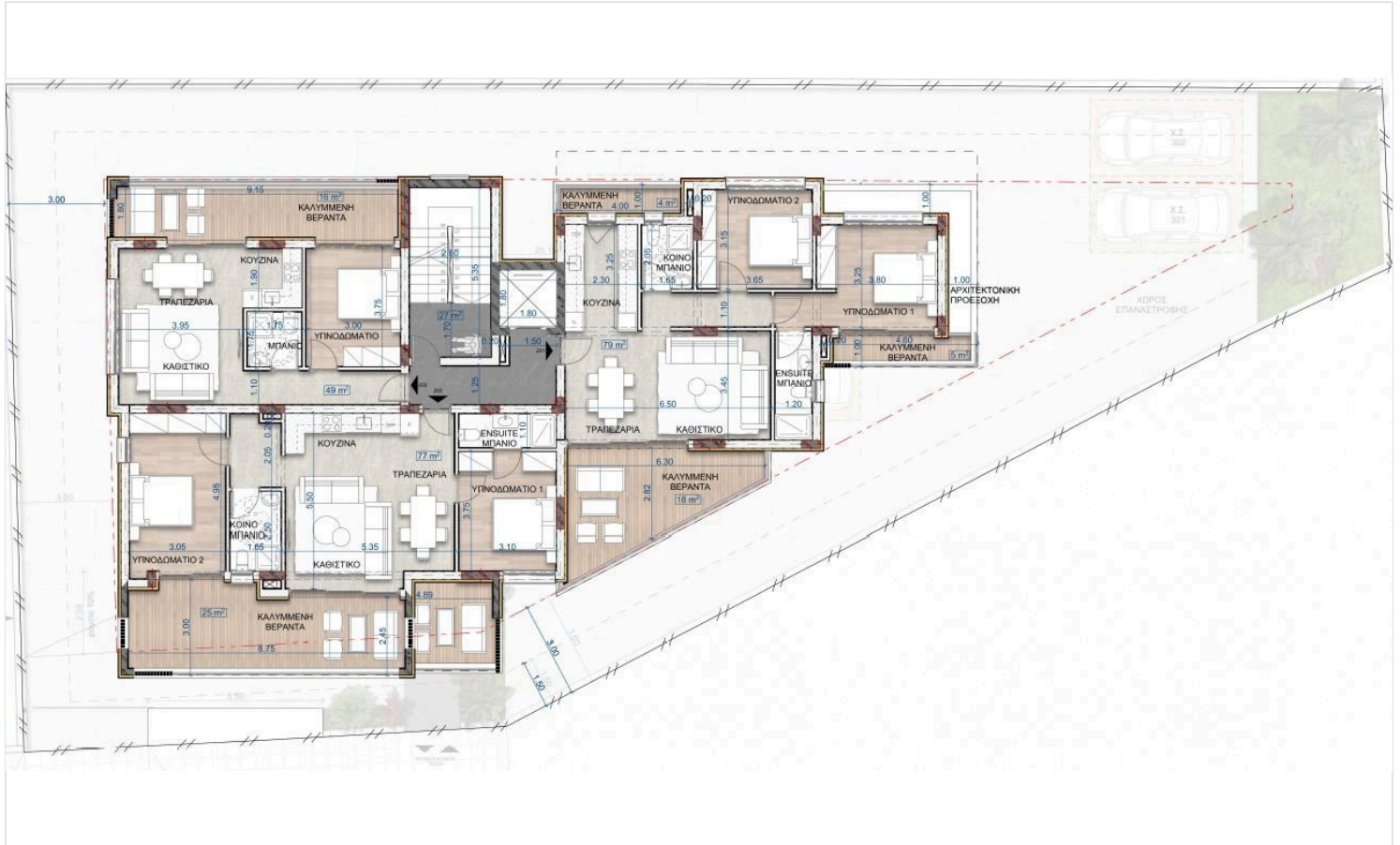
Panthea is known for its serene environment and picturesque views. This area offers a perfect balance of tranquility and accessibility, providing residents with quick access to a variety of amenities, including supermarkets, cafes, and parks.

This apartment also boasts an impressive energy efficiency rating of A, ensuring savings on utility bills while contributing to a more sustainable lifestyle.

*Location on map is indicative.



Floor plans



Additional information

Facilities

Aircondition, Provision

Heating, Provision

Parking, Covered

Solar water heater

Storage

Features

Ceramic tiles

Double glazing

Granite countertops

Laminate flooring

Modern design

Near amenities

Pressurized water system

Thermal insulation

Contact us



Katerina Athini

 katerina@cyprusdomus.com

