

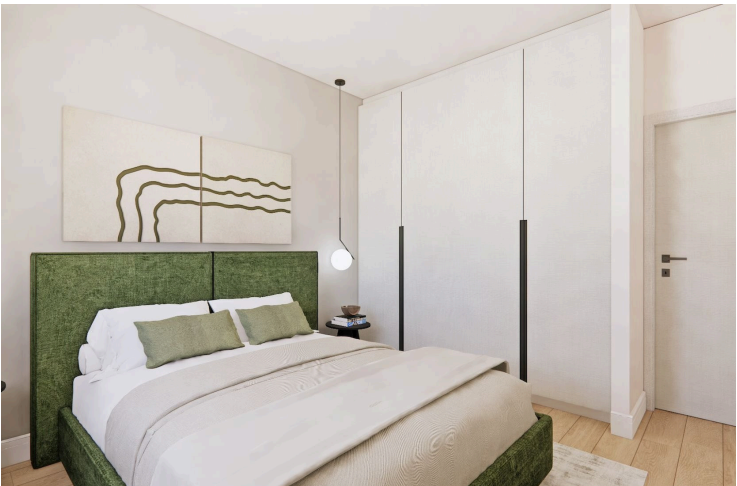
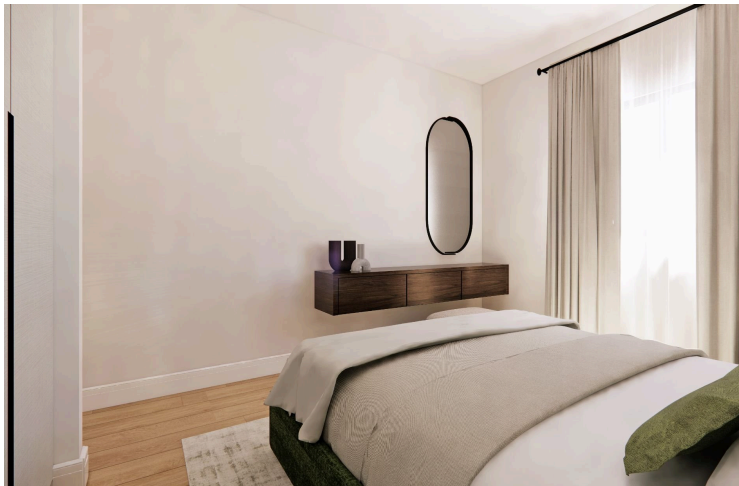
#7865

New Penthouse for sale in Kato Polemidia area.

 Kato Polemidia, Limassol





€295,000 +VAT





Overview

Specifications

Bedrooms		Bathrooms		Covered	
 2		 2		 76 m ²	
Type	Apartment				Energy efficiency rating  A
Status	Off plan				

Description

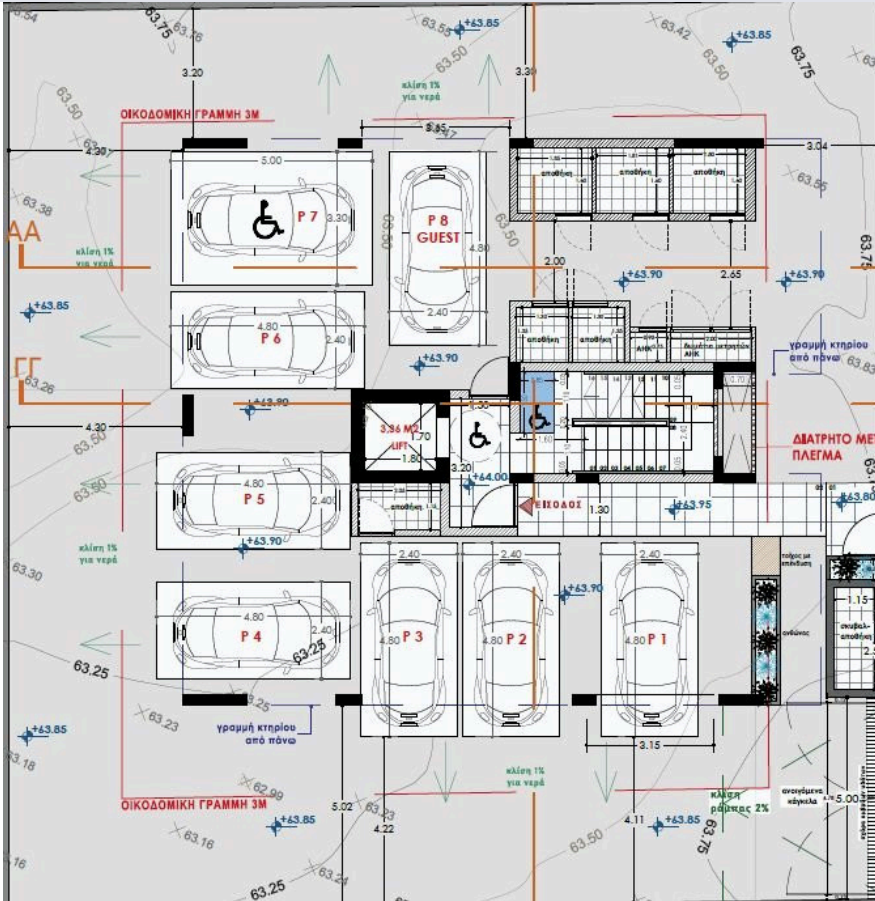
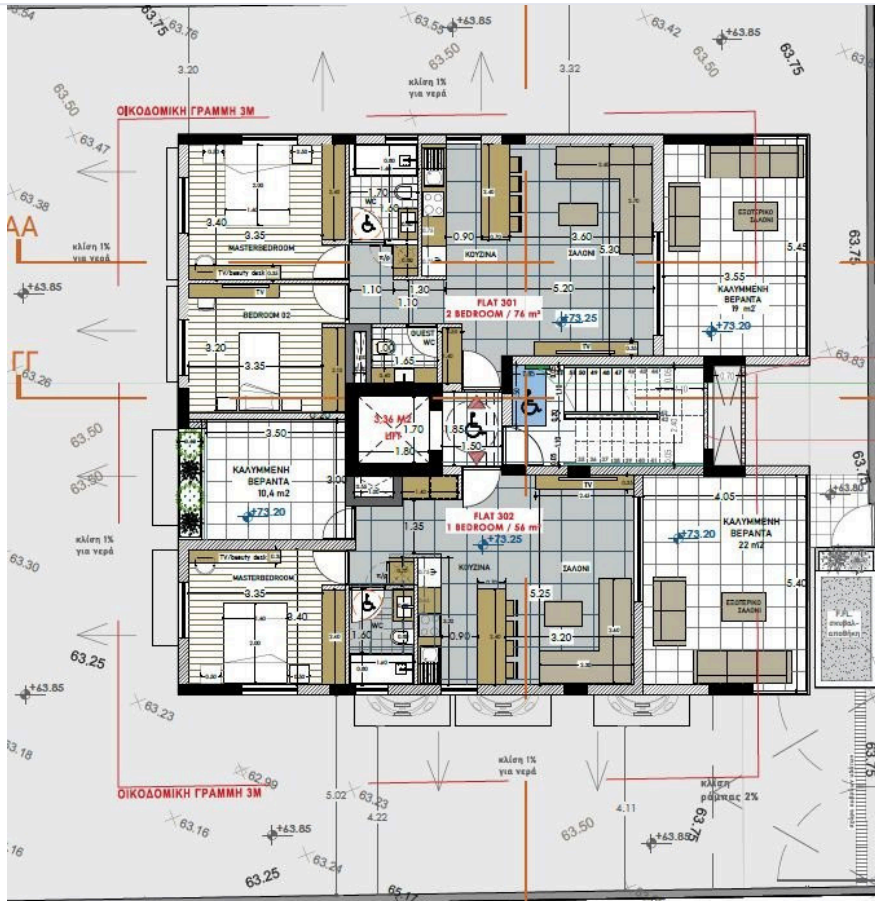
The penthouse consists of an open plan kitchen, dining and living area, 2 bedrooms and 2 bathrooms.

It has 1 covered parking and 1 storage.

*Location on map is indicative.



Floor plans



Additional information

Facilities

Aircondition, Split system

Gated complex

Heating, Central, electric

Parking, Covered

Solar photovoltaic panels

Storage

Features

Alarm system

CCTV

Double glazing

Easy access to highway

Near amenities

Roller blinds

Thermal insulation

Contact us



Katerina Athini

 katerina@cyprusdomus.com

