

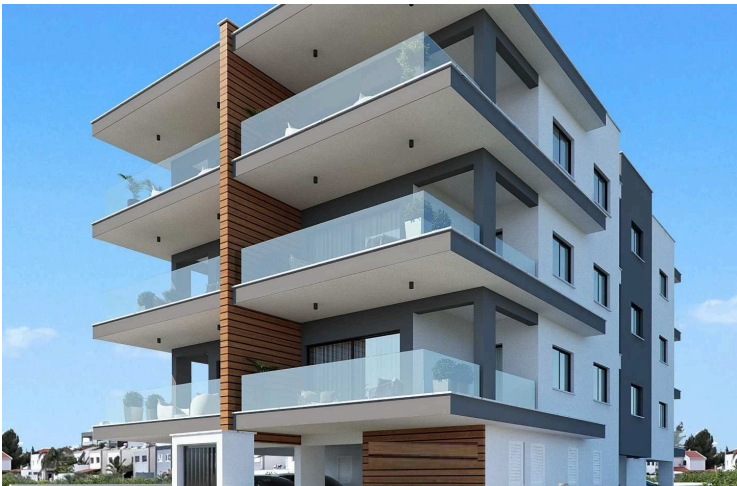
#7873

New Penthouses For Sale in Kato Polemidia Area.

 Kato Polemidia, Limassol

€290,000 +VAT





Overview

Specifications

Bedrooms



Bathrooms



Covered



Type

Apartment

Status

Under construction

Description

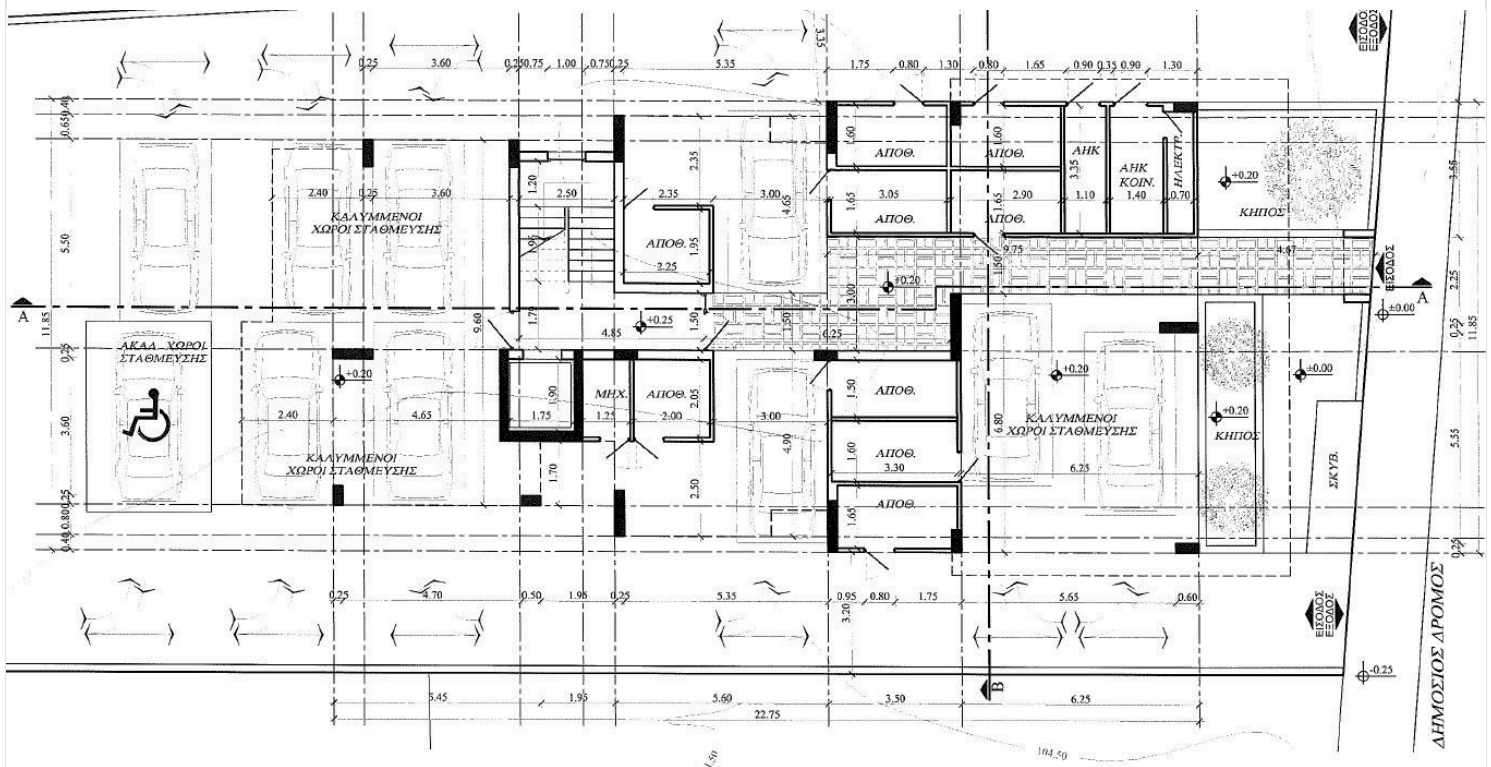
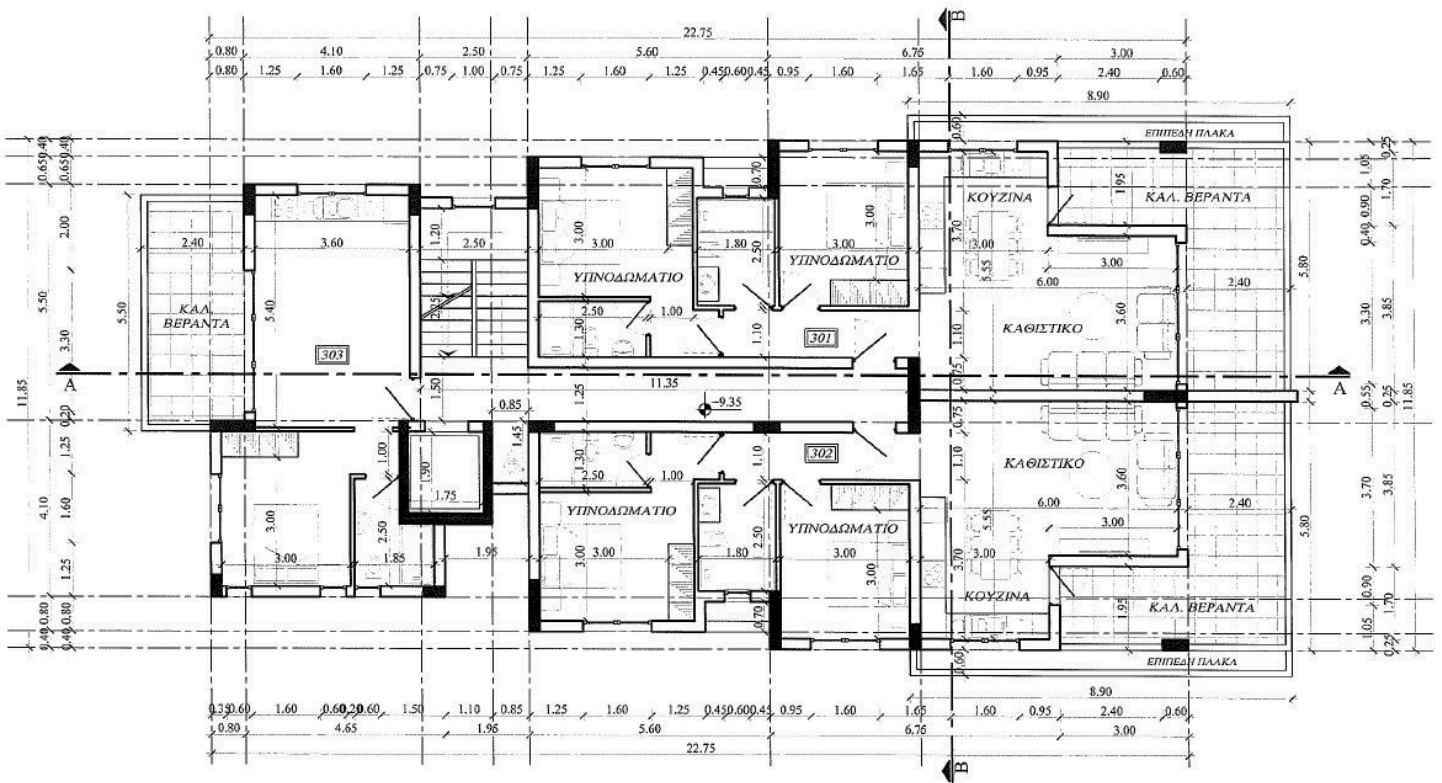
This modern residence offers 77 m² of internal space, designed for comfortable and functional living. It features an open-plan living and dining area, a stylish kitchen, two spacious bedrooms, and two contemporary bathrooms. Large windows bring in natural light and create a welcoming atmosphere throughout.

Kato Polemidia is a fast-growing neighborhood known for its family-friendly environment, excellent access to main roads, and a wide range of amenities. Here you will find schools, supermarkets, parks, and healthcare facilities all within easy reach. The area combines a relaxed suburban feel with convenient connections to the city center, making it ideal for both professionals and families.

*Location on map is indicative.



Floor plans



Additional information

Facilities

Parking, Covered

Solar photovoltaic panels

Solar water heater

Storage

Features

Double glazing

En suite bathroom

Entrance gate, automated

Granite countertops

Open plan

Thermal insulation

Contact us



Katerina Athini

✉ katerina@cyprusdomus.com

