

#7958

New Apartment Building For Sale in Mesa Geitonia Area.

📍 Mesa Geitonia, Limassol

€2,755,000 +VAT






Overview

Specifications

Covered

 **578.5 m²**

Type	Apartment Building	Status	Off plan
Plot	525 m²	Energy efficiency rating	 A+

Description

A premium residential development strategically located in the heart of Limassol, just moments away from the city business center, the beach, and a wealth of amenities.

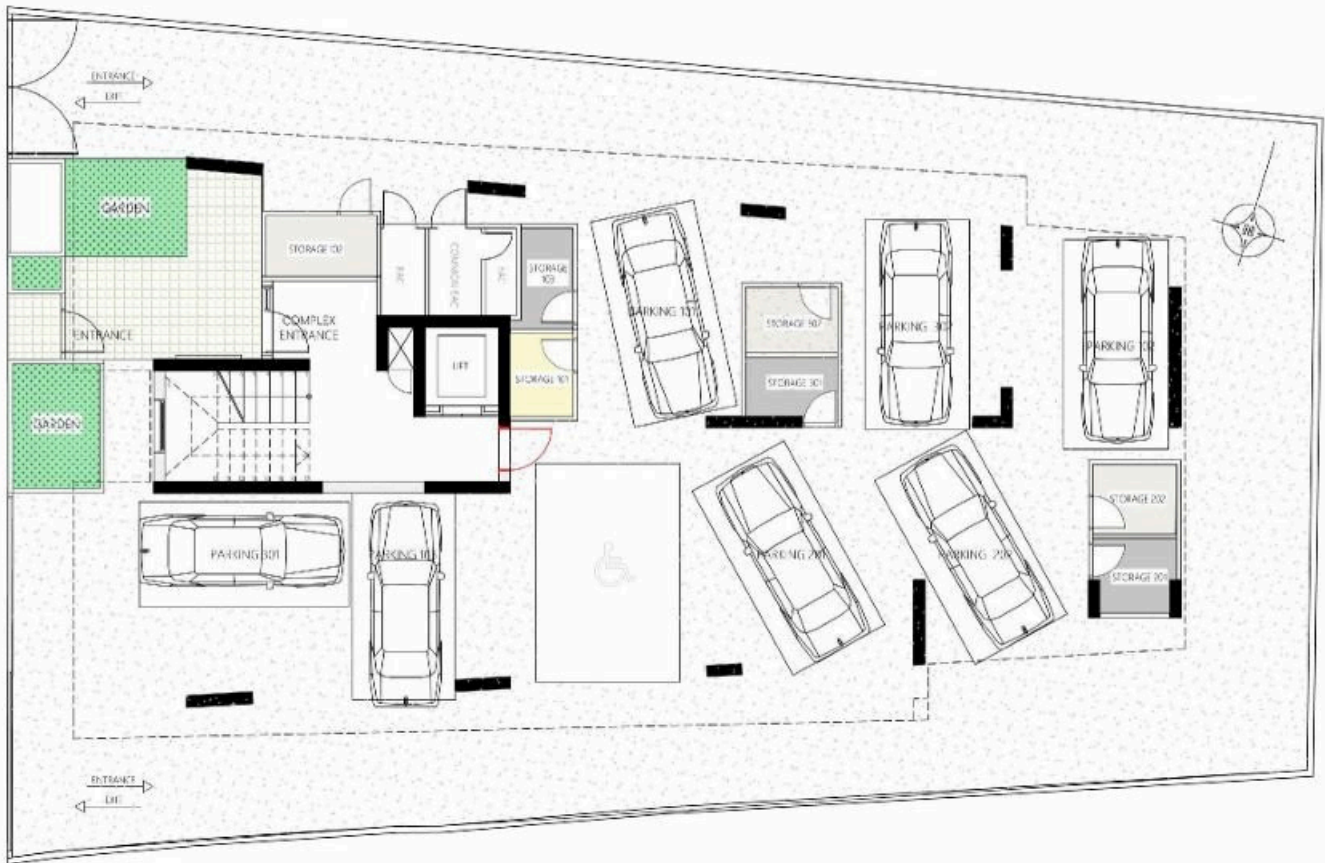
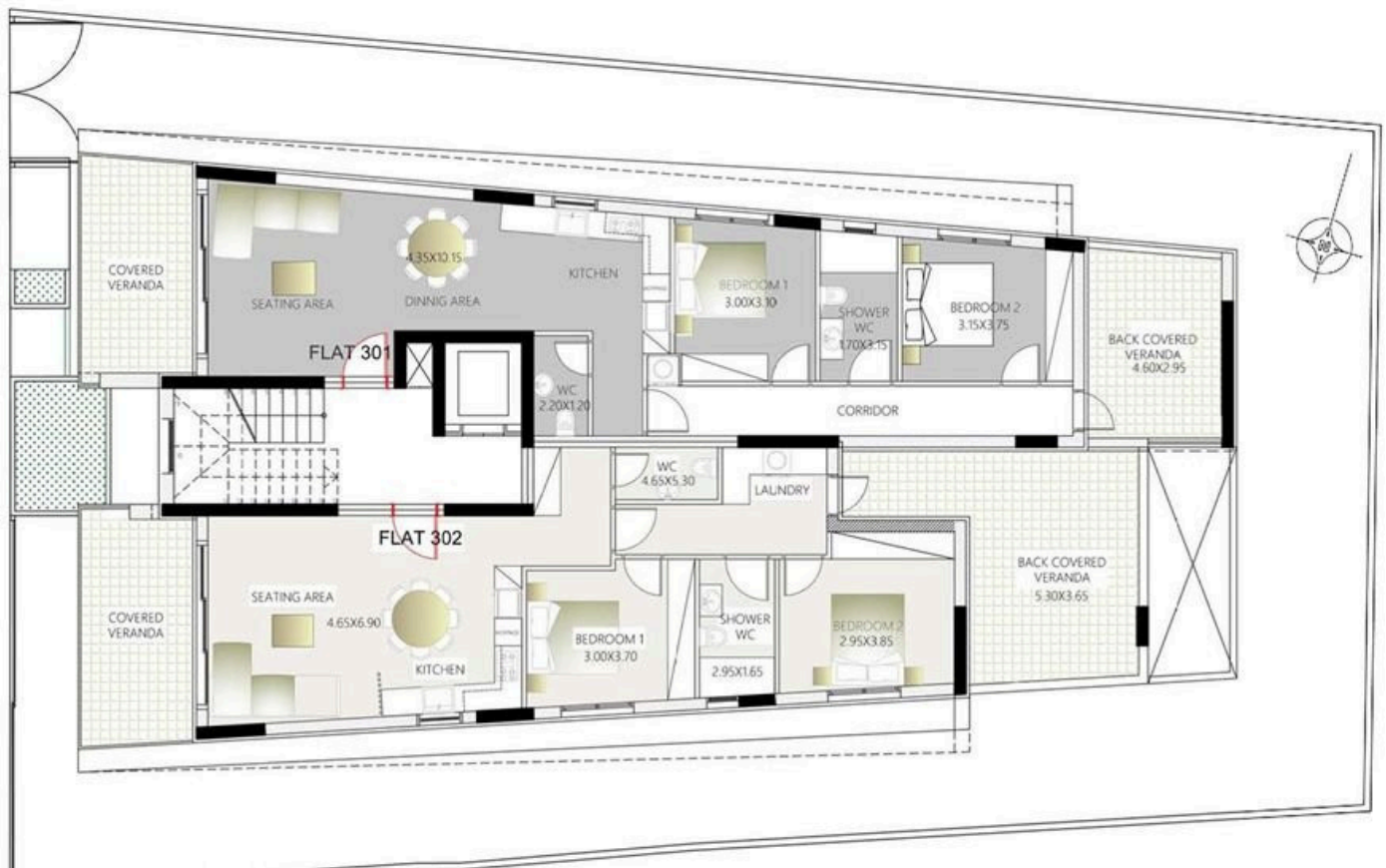
This is a three-floor development with a total of seven flats for sale, covering a combined area of 761 sqm on a 525 sqm plot of land. The building features six two-bedroom flats and one one-bedroom flat, designed to cater to the high-demand rental market of Limassol.

*The second and third floors can be extended to transform the two-bedroom flats into three-bedroom units, maximizing rental income and value.

*Location on map is indicative.



Floor plans



Additional information

Facilities

Aircondition, Provision

Elevator

Heating, Provision

Parking, Covered

Storage

Features

Double glazing

Easy access to highway

Near amenities

Quiet area

Shutters, electric (provision)

Contact us



Katerina Athini

✉ katerina@cyprusdomus.com

