

#8028

New Apartments For Sale in Panthea Area.

 Panthea, Limassol

€390,000 +VAT





Overview

Specifications

Bedrooms

 2

Bathrooms

 2

Covered

 87.8 m²

Type

Apartment

Status

Under construction

Energy efficiency rating

 **A**

Description

This spacious property offers an internal area of 87.8 m², thoughtfully designed for comfortable, contemporary living. The layout includes two bedrooms and two bathrooms (1 ensuite), making it ideal for families and couples.

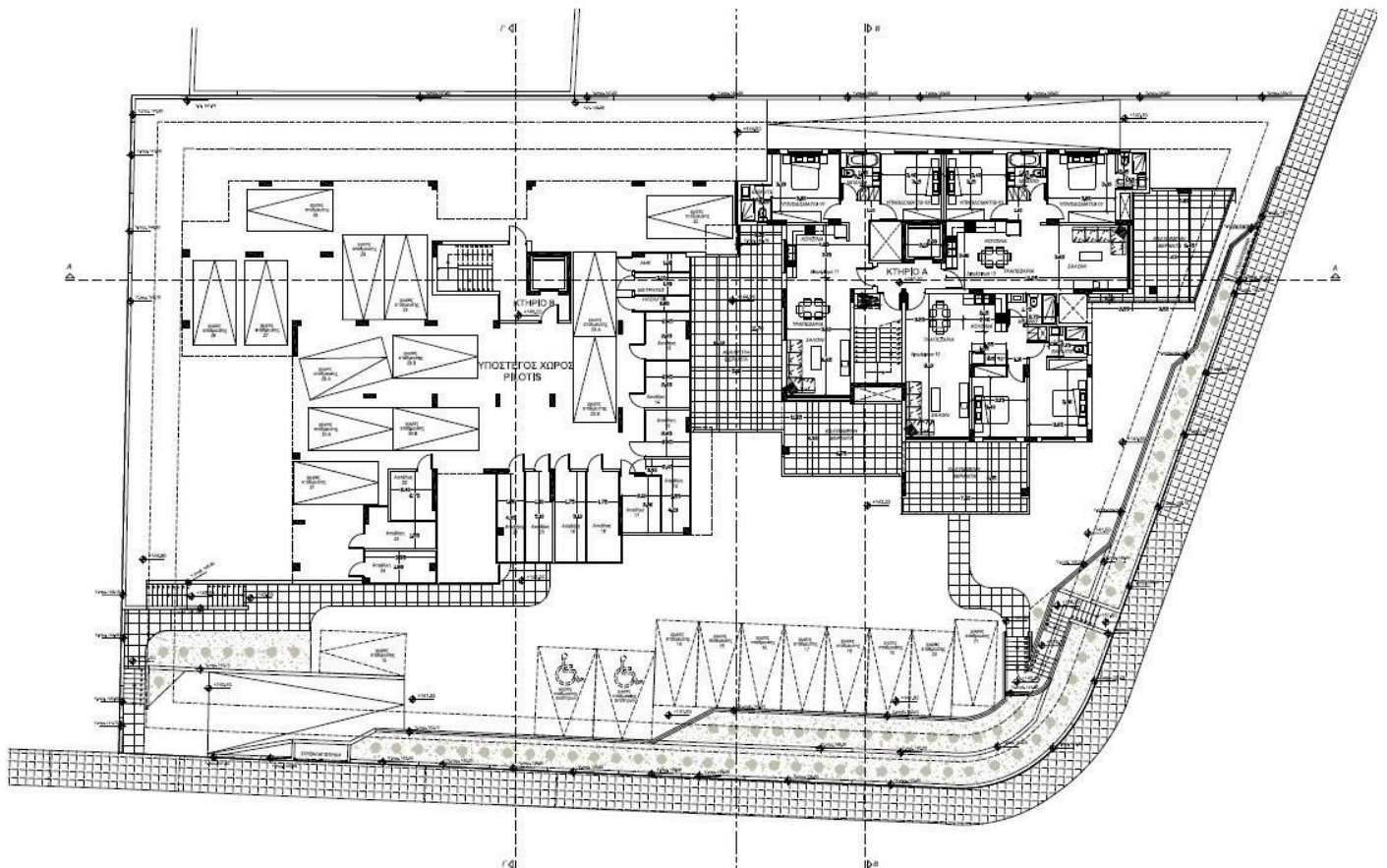
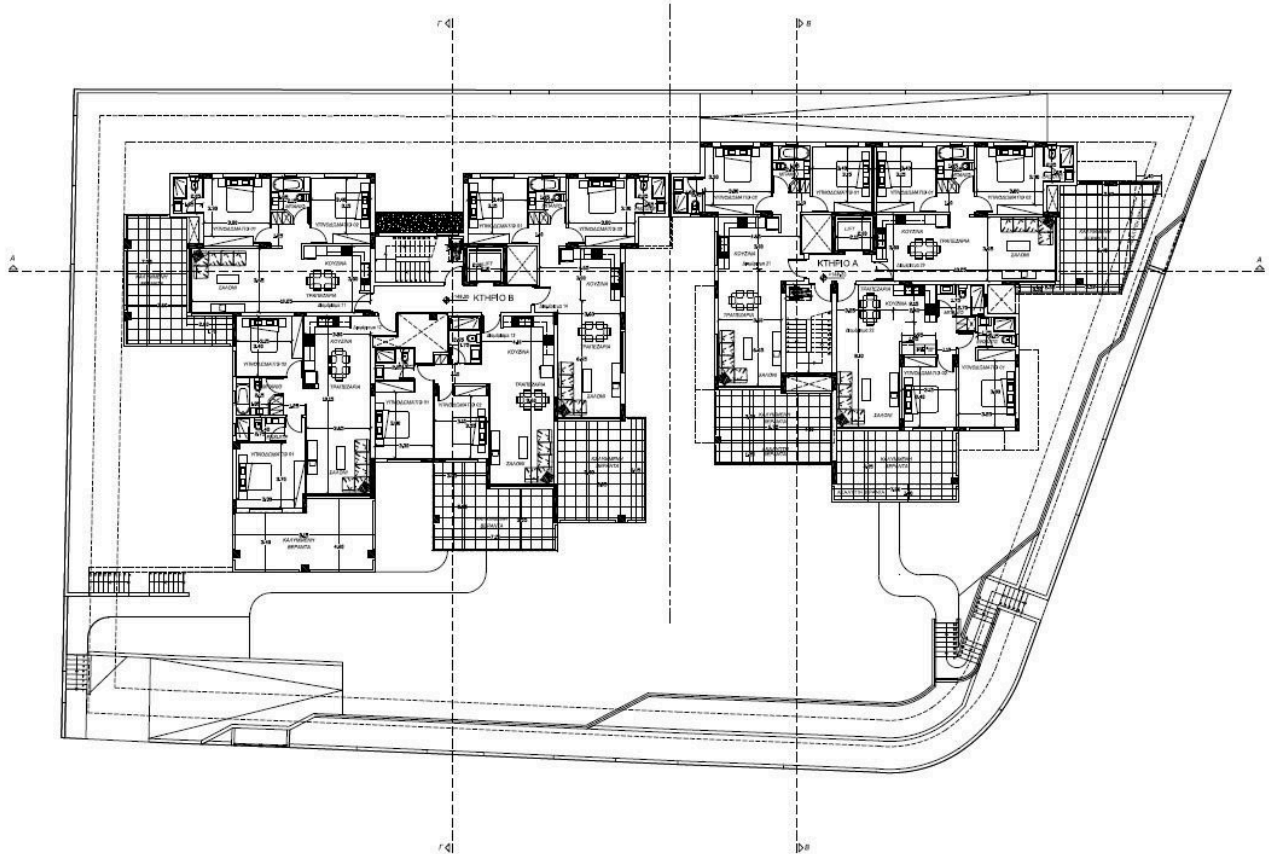
Panthea is a sought-after neighborhood known for its peaceful environment and excellent accessibility. Residents enjoy close proximity to schools, parks, supermarkets, and all essential amenities.

This apartment features top-quality specifications including energy efficiency class A, a central air conditioning system, and underfloor heating, ensuring comfort and low running costs in every season. Large windows allow natural light to flood the interior, creating a bright and welcoming atmosphere.

*Location on map is indicative.



Floor plans



Additional information

Facilities

Aircondition, Central system

Heating, Underfloor

Parking, Covered

Solar photovoltaic panels

Solar water heater

Storage

Features

Alarm system (provision)

CCTV

Double glazing

En suite bathroom

Pressurized water system

Shutters, electric

Thermal insulation

Veranda, large

Contact us



Katerina Athini

 katerina@cyprusdomus.com

