

#8029

# New Apartments For Sale in Panthea Area.

 Panthea, Limassol

**€435,000** +VAT







# Overview

## Specifications

Bedrooms

 2

Bathrooms

 2

Covered

 87.8 m<sup>2</sup>

Type

**Apartment**

Status

**Under construction**

Energy efficiency rating

 **A**

## Description

This spacious property offers an internal area of 87.8 m<sup>2</sup>, thoughtfully designed for comfortable, contemporary living. The layout includes two bedrooms and two bathrooms (1 ensuite), making it ideal for families and couples.

Panthea is a sought-after neighborhood known for its peaceful environment and excellent accessibility. Residents enjoy close proximity to schools, parks, supermarkets, and all essential amenities.

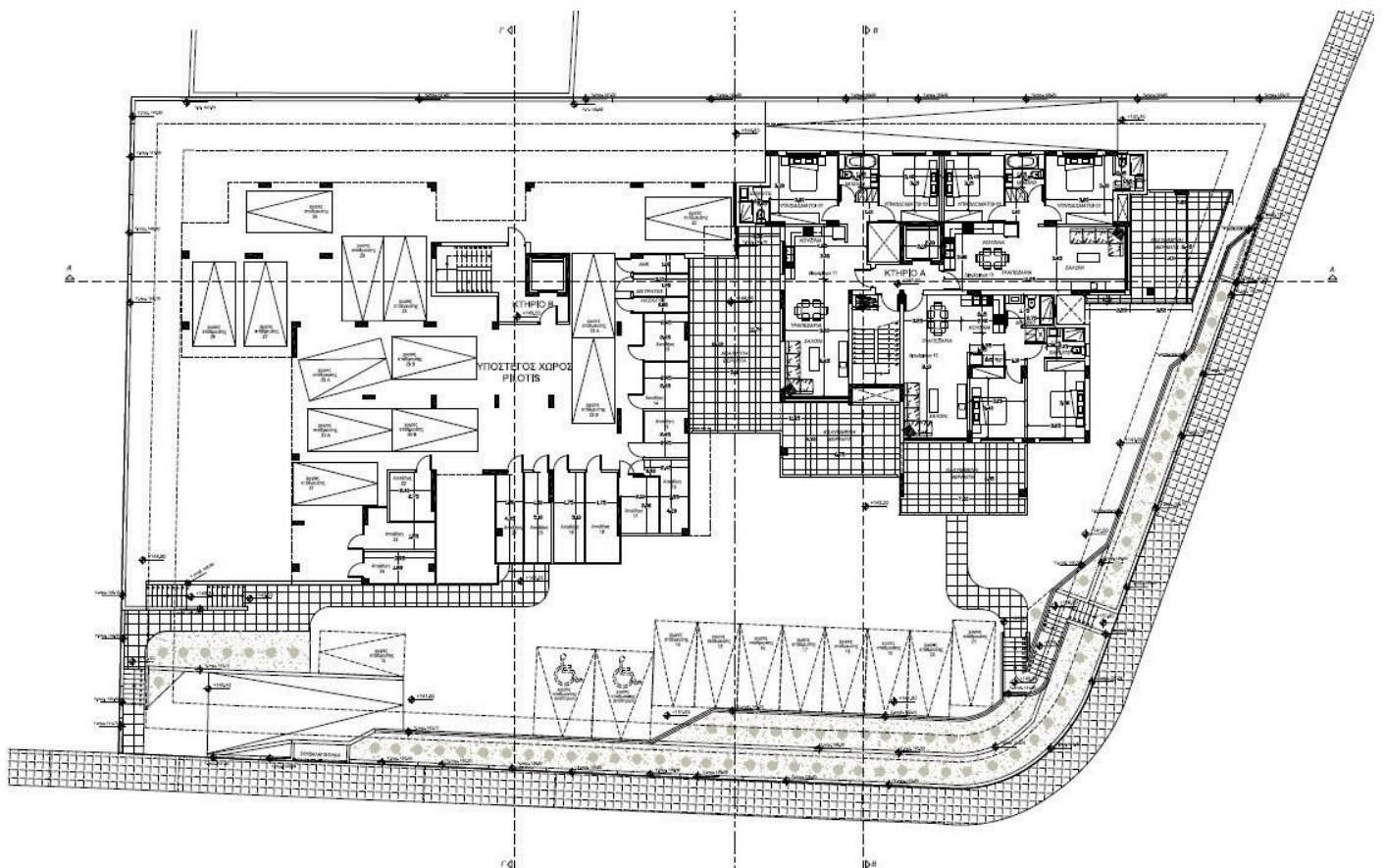
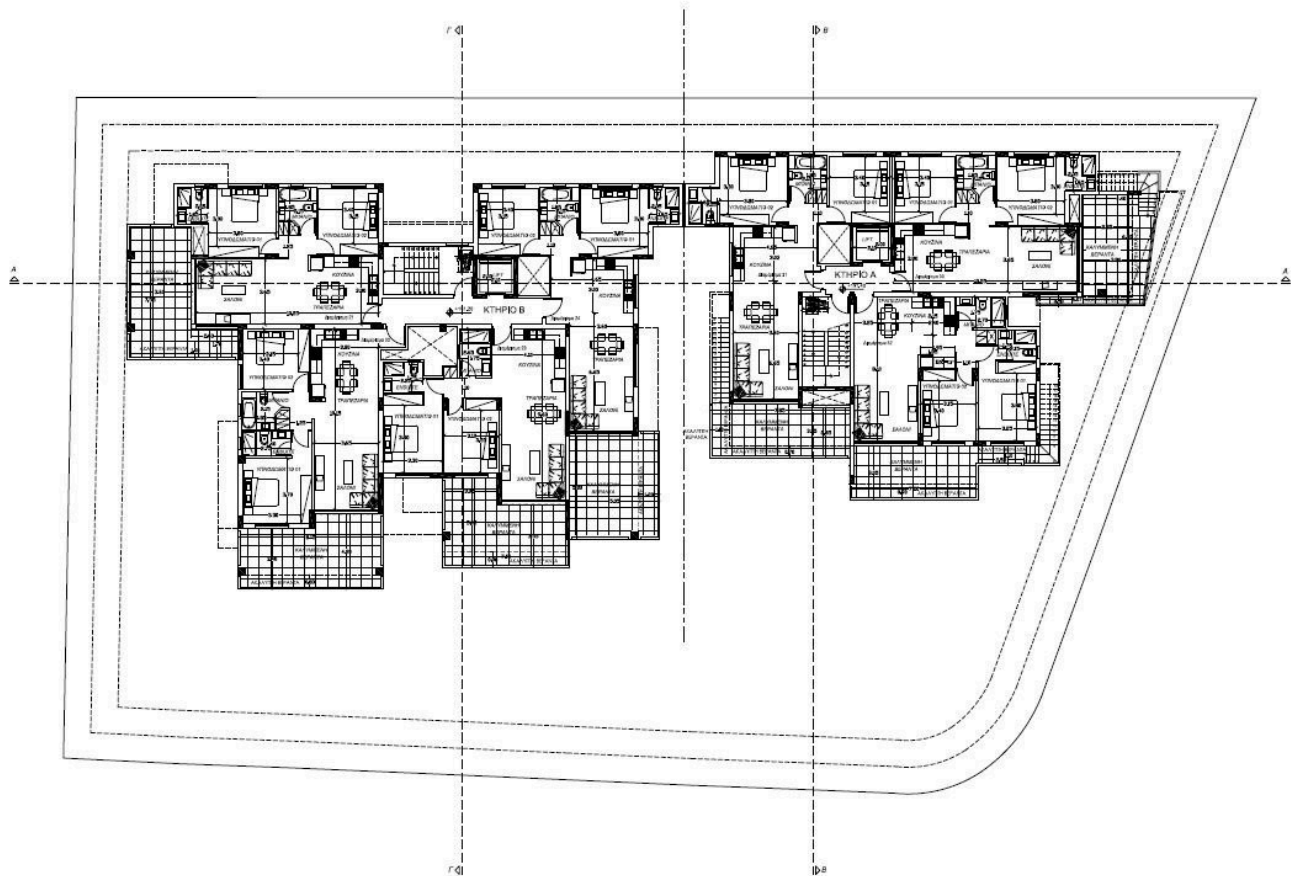
This apartment features top-quality specifications including energy efficiency class A, a central air conditioning system, and underfloor heating, ensuring comfort and low running costs in every season. Large windows allow natural light to flood the interior, creating a bright and welcoming atmosphere.

\*Location on map is indicative.





# Floor plans



# Additional information

## Facilities

Aircondition, Central system

Heating, Underfloor

Parking, Covered

Solar photovoltaic panels

Solar water heater

Storage

## Features

Alarm system (provision)

CCTV

Double glazing

En suite bathroom

Pressurized water system

Shutters, electric

Thermal insulation

Veranda, large

## Contact us



**Katerina Athini**

 [katerina@cyprusdomus.com](mailto:katerina@cyprusdomus.com)

