

#8071

New Sea View Penthouse For Sale in Panthea Area

 Panthea, Limassol

€315,000 +VAT





Overview

Specifications

Bedrooms



1

Bathrooms



1

Covered

 56 m²

Type

Apartment

Toilets

1

Status

Under construction

Description

This property offers an internal space of 56 m2, thoughtfully designed for comfort and convenience. The apartment features 2 bedrooms and 1 bathroom and 1 guest w/c.

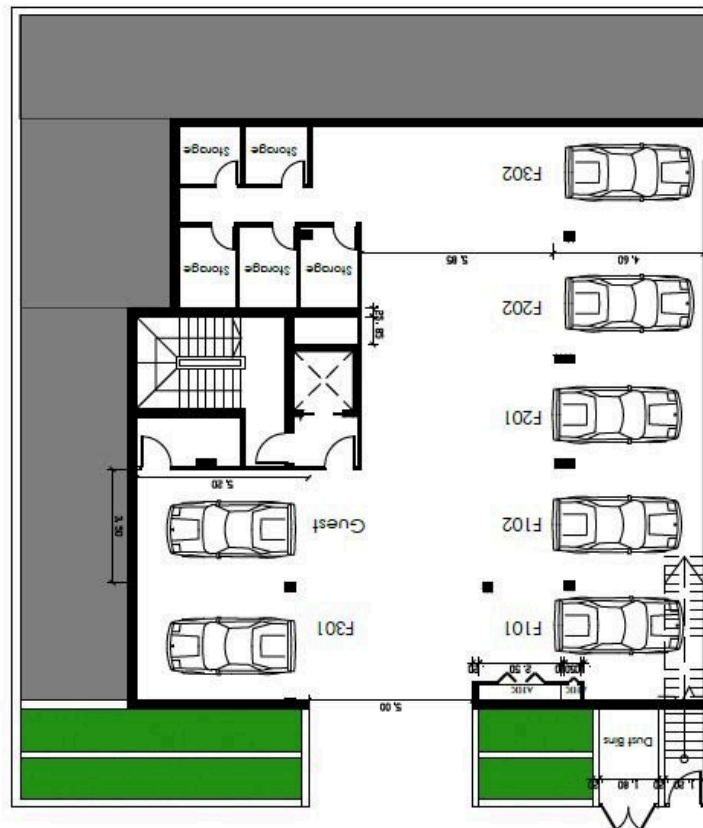
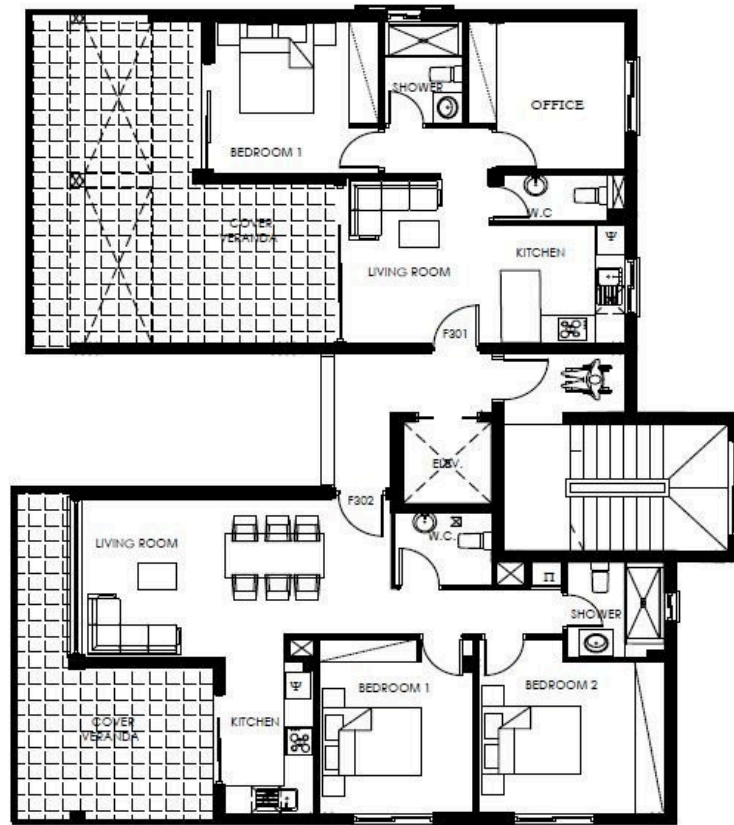
The penthouse is situated in Panthea, a sought-after residential area known for its peaceful environment and well-developed infrastructure. Residents enjoy easy access to excellent schools, parks, and shopping centers. Panthea is favored by families and professionals due to its blend of quiet living and proximity to the vibrant city center.

This apartment benefits from being close to many amenities, including supermarkets, cafes, and recreational areas, all just a short drive away. With its prime location and quality design, this property offers a perfect balance between urban convenience and comfortable living.

*Location on map is indicative.



Floor plans



Additional information

Facilities

Aircondition, Split system

Parking, Underground

Features

Ceramic tiles

Double glazing

Near amenities

Thermal insulation

Contact us



Katerina Athini

✉ katerina@cyprusdomus.com

