

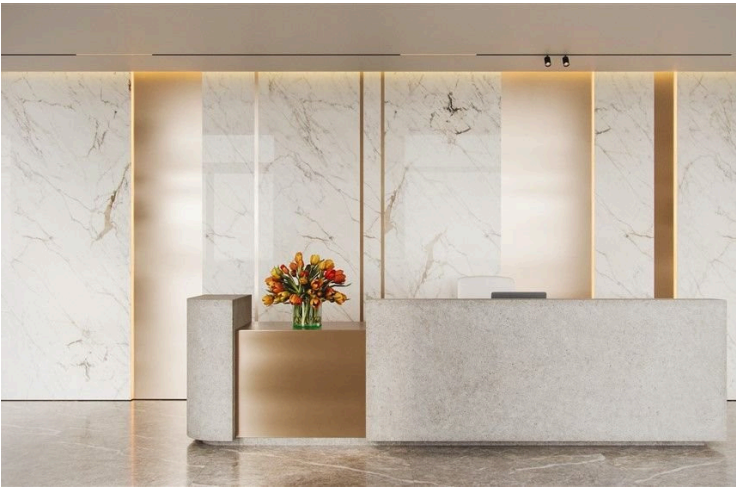
#8100

# New Whole Floor Office For Sale in Petrou & Pavlou Area.

 Petrou Kai Pavlou, Limassol

**€1,300,000** +VAT





# Overview

## Specifications

Covered

 **129.25 m<sup>2</sup>**

Type

**Office**

Status

**Off plan**

## Description

The open-plan layout offers future owners the opportunity to divide the office into functional zones and design the space in a personalized style.

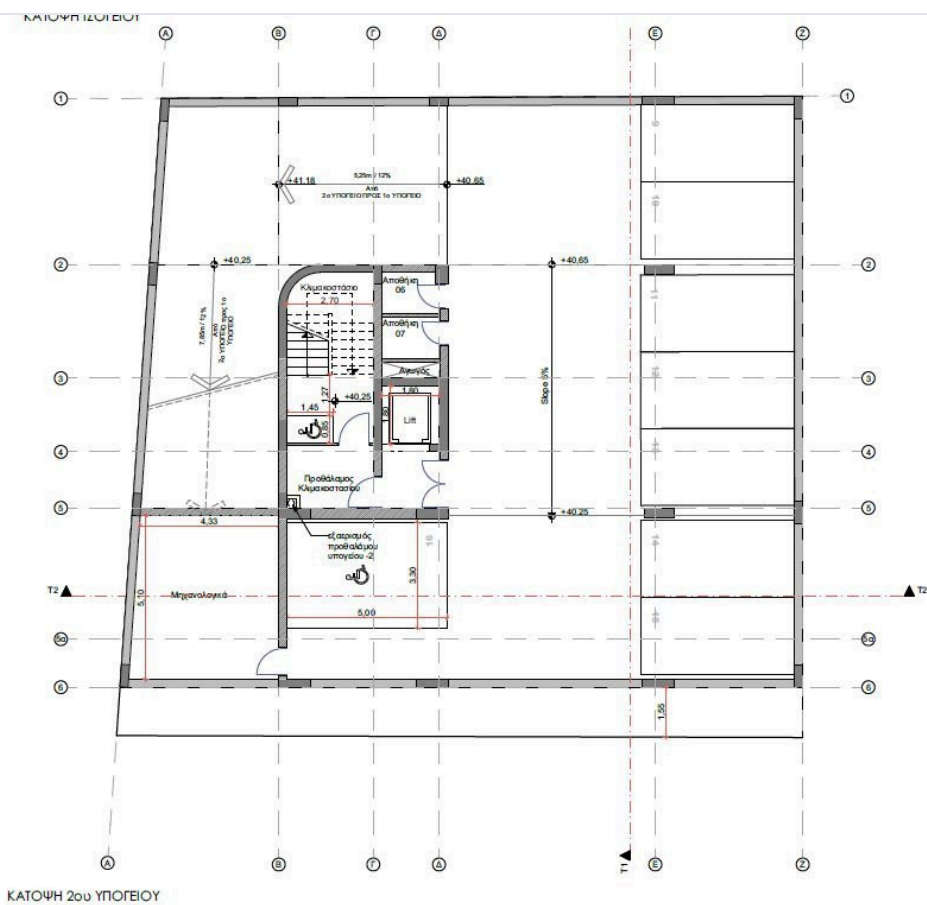
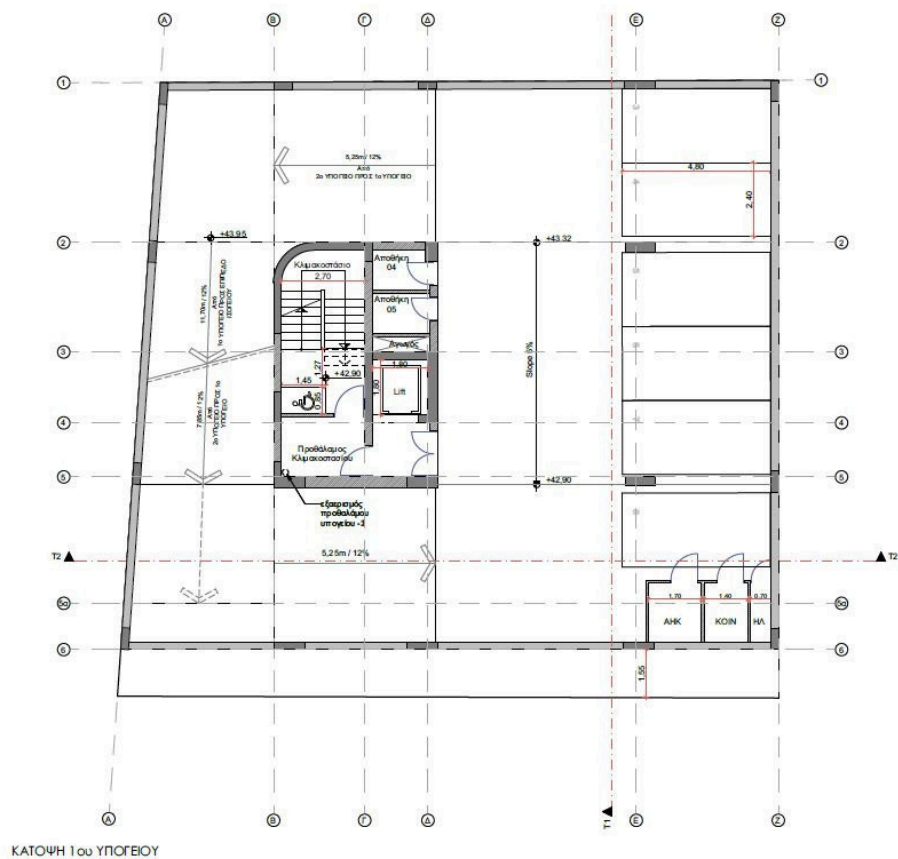
This approach provides maximum flexibility in customizing your workspace: you have the freedom to implement any layout, interior design, and technical infrastructure tailored to your company's unique goals.

The ground floor welcomes guests and employees with a spacious, bright, and elegantly designed lobby, crafted in a contemporary architectural style. High ceilings, premium finishes, and thoughtfully designed lighting create an atmosphere of prestige and professionalism.

\*Location on map is indicative.



# Floor plans



# Additional information

## Facilities

Elevator

Parking, Underground

Solar photovoltaic panels

## Features

Entrance gate

## Contact us



**Katerina Athini**

✉ [katerina@cyprusdomus.com](mailto:katerina@cyprusdomus.com)

