

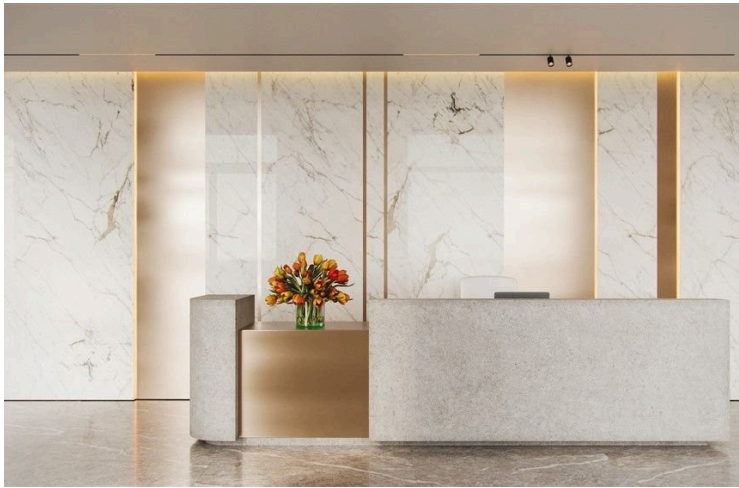
#8101

New Whole Floor Office For Sale in Petrou & Pavlou Area.

 Petrou Kai Pavlou, Limassol

€1,350,000 +VAT





Overview

Specifications

Covered

 **110.36 m²**

Type

Office

Status

Off plan

Description

The open-plan layout offers future owners the opportunity to divide the office into functional zones and design the space in a personalized style.

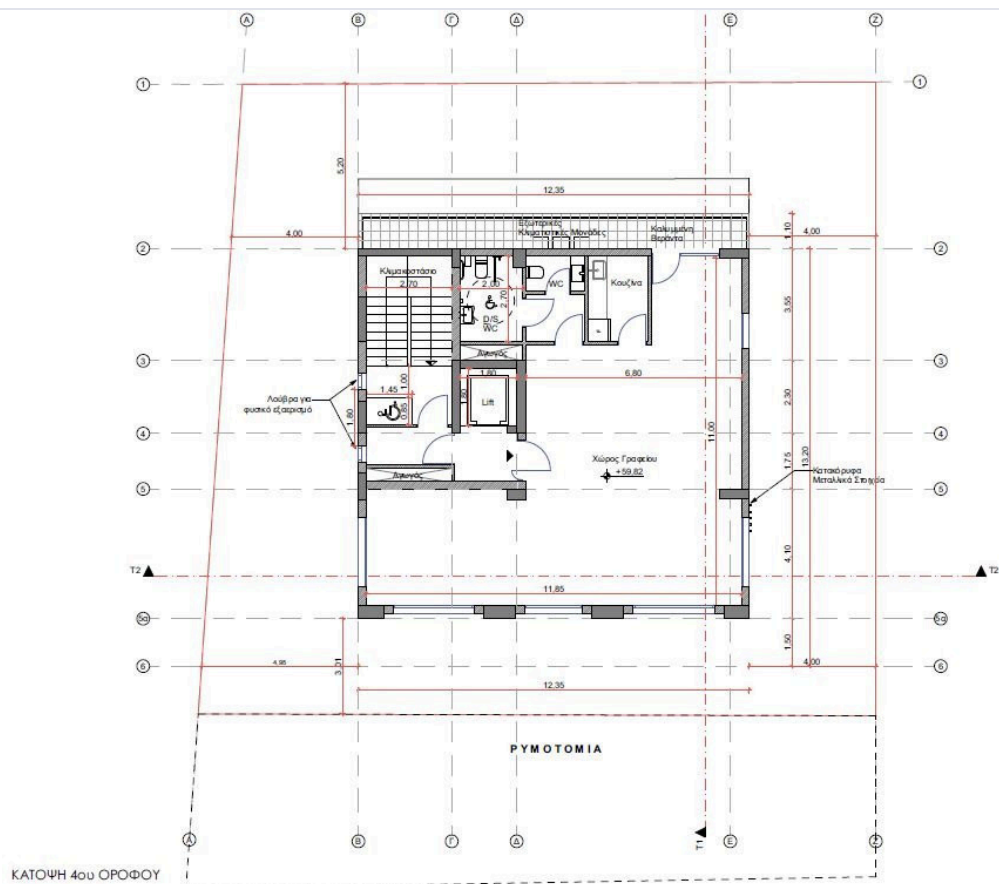
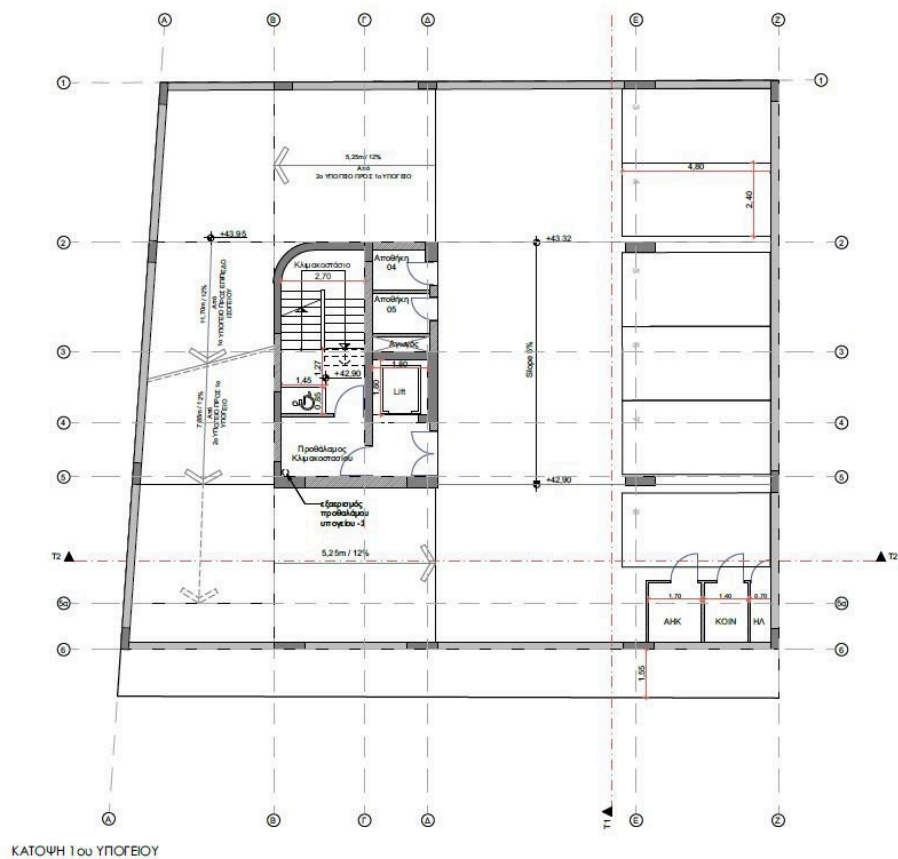
This approach provides maximum flexibility in customizing your workspace: you have the freedom to implement any layout, interior design, and technical infrastructure tailored to your company's unique goals.

The ground floor welcomes guests and employees with a spacious, bright, and elegantly designed lobby, crafted in a contemporary architectural style. High ceilings, premium finishes, and thoughtfully designed lighting create an atmosphere of prestige and professionalism.

*Location on map is indicative.



Floor plans



Additional information

Facilities

Elevator

Parking, Underground

Solar photovoltaic panels

Features

Entrance gate

Contact us



Katerina Athini

✉ katerina@cyprusdomus.com

