

#8138

New Apartments For Sale in Episkopi Area

 Episkopi Lemesou, Limassol

€232,000 +VAT





Overview

Specifications

Bedrooms



Bathrooms



Covered



Type

Apartment

Status

Off plan

Description

With an internal space of 88 m², this apartment offers a comfortable design that suits both families and individuals. The open-plan living area is bright and spacious, while the two bedrooms provide plenty of room for relaxation and privacy.

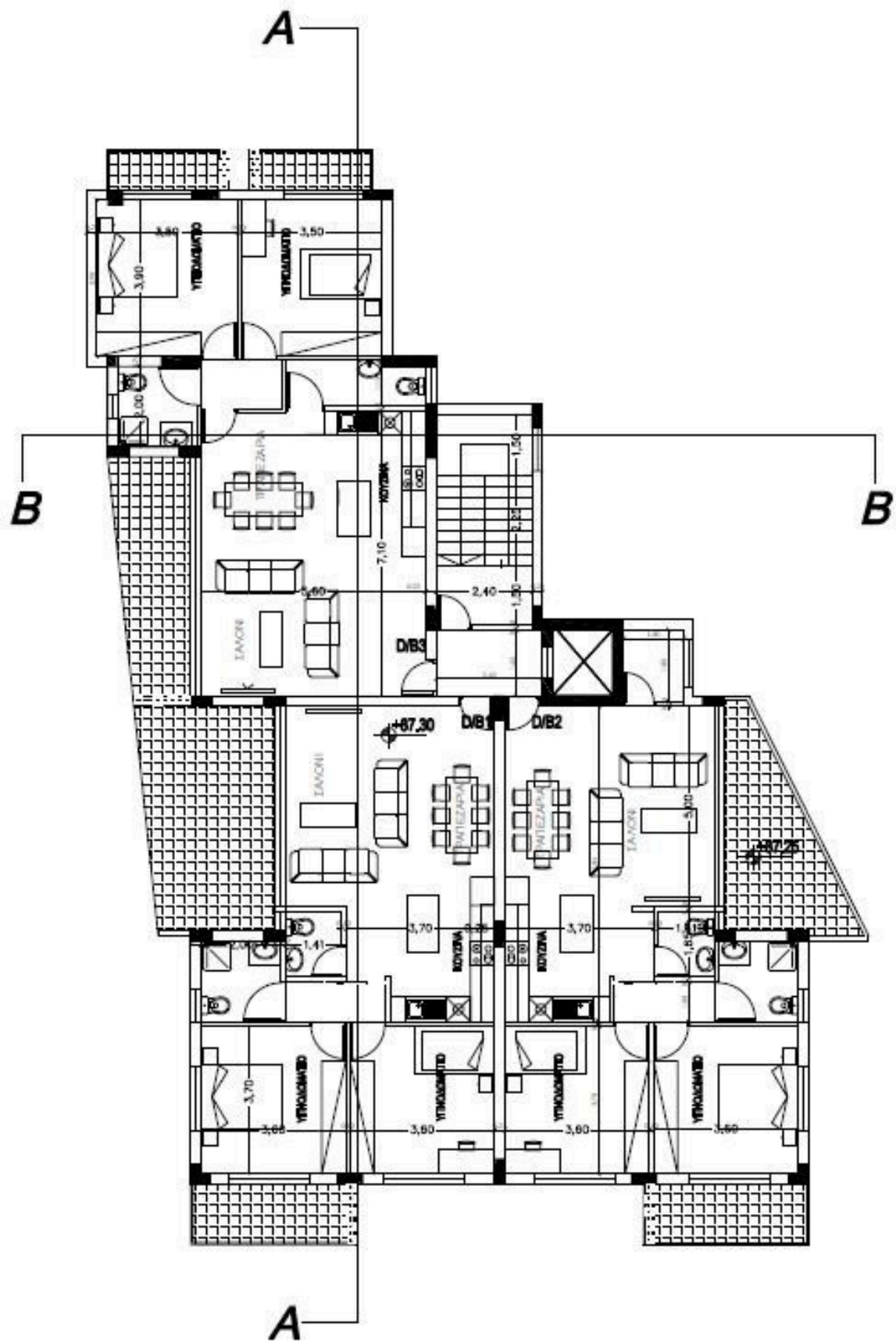
Episkopi Lemesou is known for its friendly atmosphere and a strong sense of community. The area features a selection of shops, cafes, and everyday amenities, making daily life convenient. Nature lovers will enjoy the nearby green spaces, while quick access to the highway ensures an easy commute to neighboring towns and key points of interest.

This property is an excellent choice for buyers looking for a modern home in a pleasant location.

*Location on map is indicative.



Floor plans



Additional information

Facilities

Parking, Covered

Solar photovoltaic panels

Solar water heater

Storage

Features

Double glazing

Easy access to highway

Easy access to main roads

Thermal insulation

Contact us



Katerina Athini

✉ katerina@cyprusdomus.com

