

#8149

New Ultra Modern Ground floor + Mezzanine In Mesa Geitonia Area

 Mesa Geitonia, Limassol

€9,900 /month





Overview

Specifications

Covered

 **242 m²**

Type

Shop

Status

Under construction

Description

Thoughtfully designed as a high - performance office building, the Project delivers enhanced opportunities for high levels of employee satisfaction, greater productivity, and improved mental and physical well-being.

To accomplish these objectives, the building benefits from an integrated design approach that focuses on meeting design and functionality objectives.

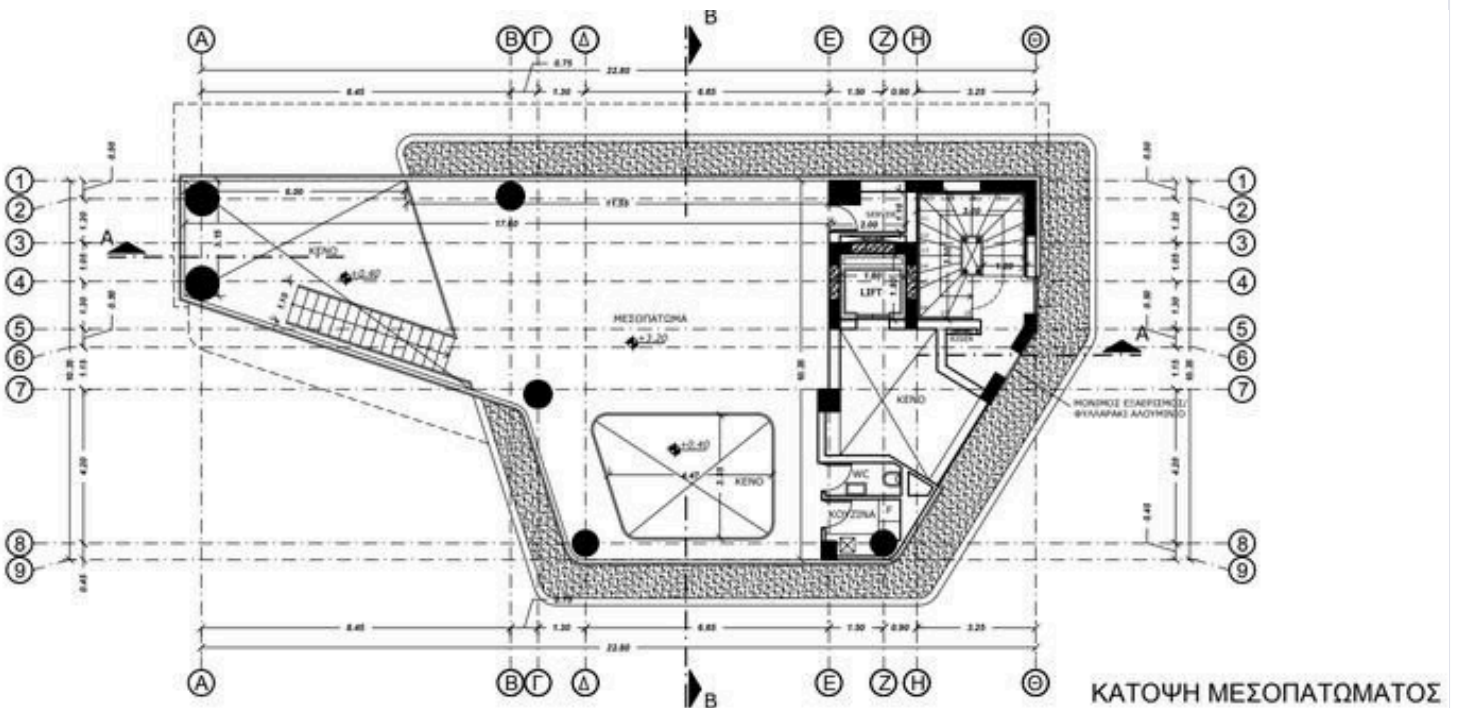
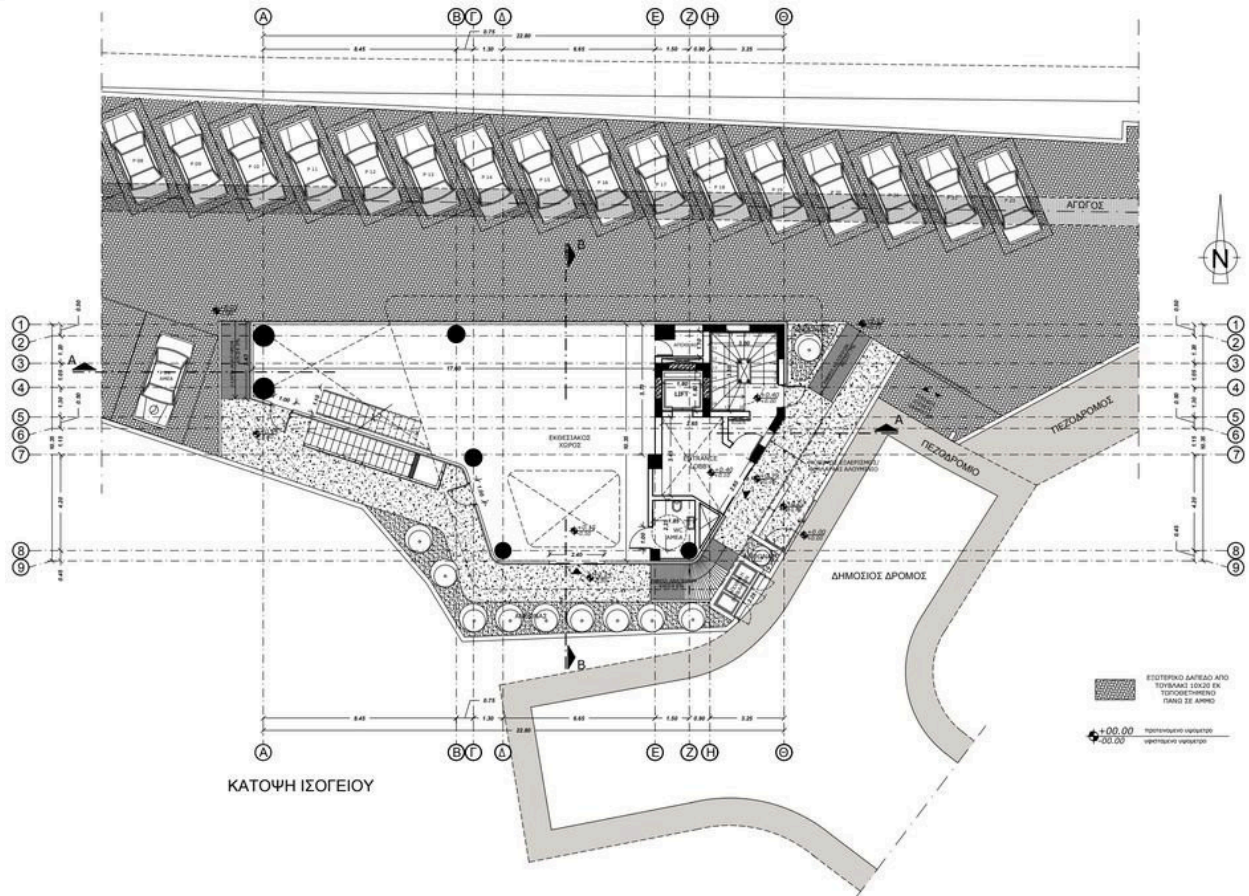
To meet the corporate needs of its occupants, adaptable and advanced infrastructure working environments are incorporated throughout.

At the same time, the building addresses all key elements that ensure optimal employee well- being : it is safe, healthy, comfortable, durable, aesthetically - pleasing, sustainable, and fully accessible.

*Location on the map is indicative.



Floor plans



Additional information

Facilities

Aircondition, Central system

Parking, Covered

Solar water heater

Features

CCTV

Entrance gate, automated

Fire detector

Kitchenette

Raised floors

Structured cabling/wiring

Thermal insulation

Contact us



Vassilis Papadopoulos

☎ (+357) 99662023

✉ info@cyprusdomus.com

