

#8152

New Apartment For Sale in Kato Polemidia Area

 Kato Polemidia, Limassol




€320,000 +VAT





Overview

Specifications

Bedrooms	Bathrooms	Covered
 2	 2	 90.2 m ²
Type	Apartment	Status
		Off plan

Description

This spacious residence offers an internal space of 90.2 m² and is located on the first floor of a three-story building. It features two comfortable bedrooms and two contemporary bathrooms, making it ideal for couples, small families, or those looking for a smart investment.

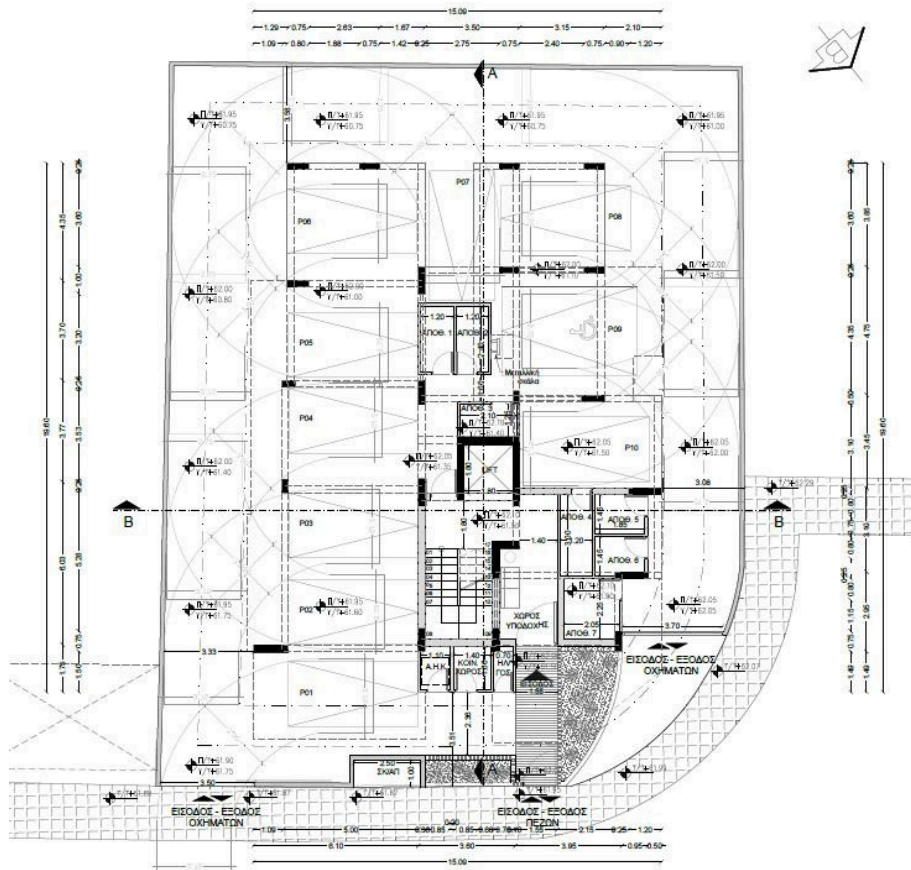
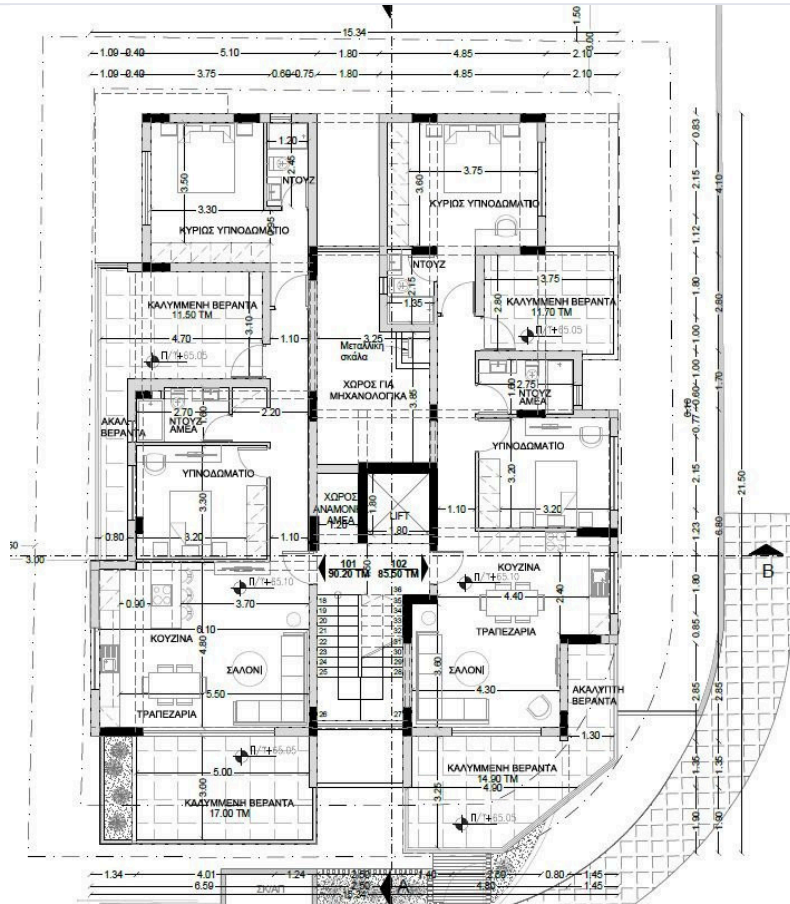
The layout is designed to maximize living space and light. The open-plan kitchen and living area provide a welcoming atmosphere for relaxing or entertaining. Large windows ensure a bright and airy feel throughout the apartment.

Kato Polemidia is a vibrant and growing neighborhood, known for its convenient access to the city center and major highways. The area offers a wide range of amenities including shops, supermarkets, cafes, and schools, all within easy reach. This location is perfect for those seeking a balance between quiet residential living and quick connectivity.

*Location on map is indicative.



Floor plans



Additional information

Facilities

Parking, Covered

Solar water heater

Storage

Features

Easy access to highway

Easy access to main roads

Near amenities

Contact us



Katerina Athini

✉ katerina@cyprusdomus.com

