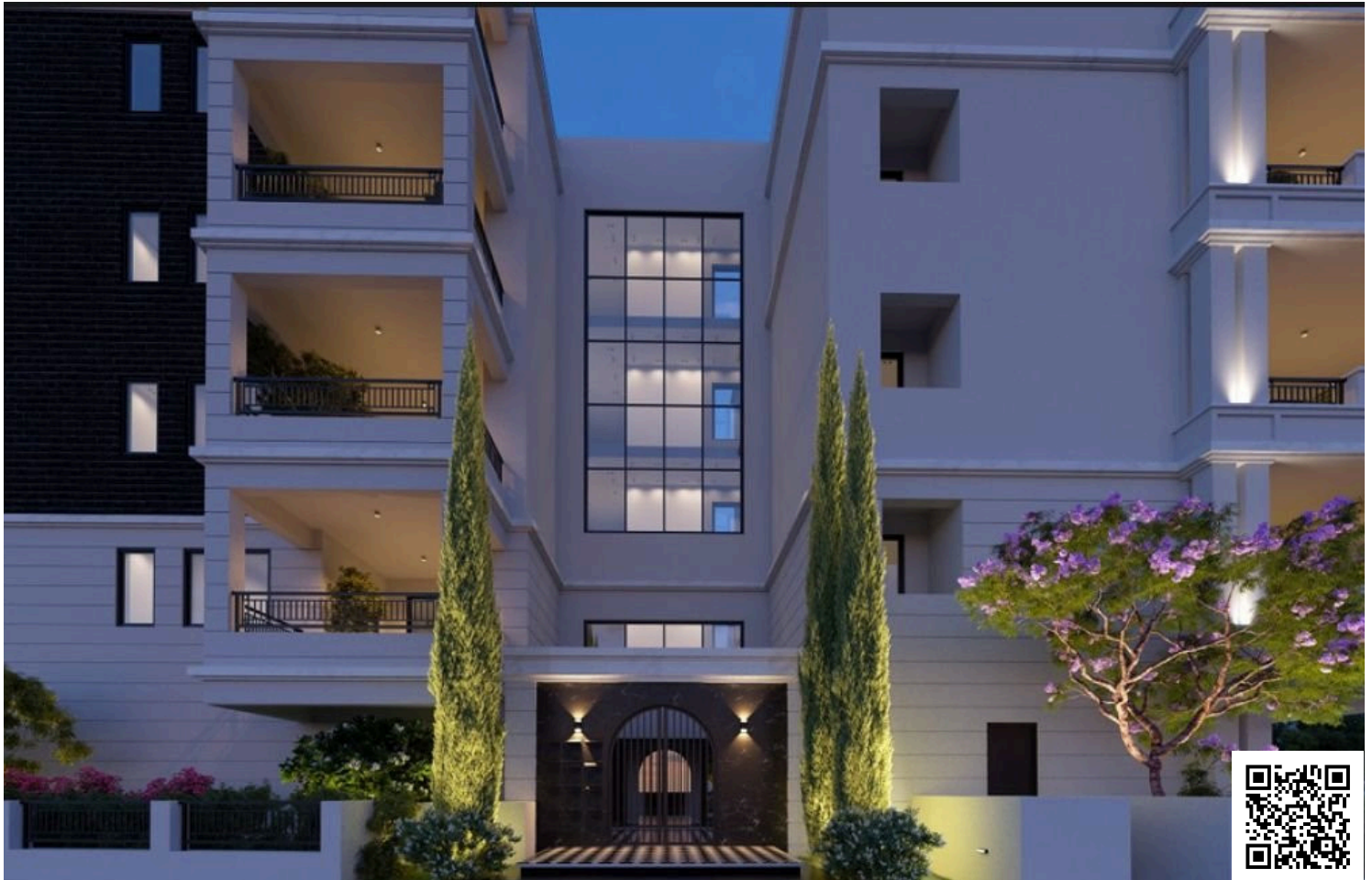


#8176

New Luxury Apartments In Petrou & Pavlou Area

 Petrou Kai Pavlou, Limassol

€410,000 +VAT





Overview

Specifications

Bedrooms

 2

Bathrooms

 1

Covered

 82.4 m²

Type

Apartment

Status

Off plan

Toilets

1

Description

Designed with functionality and style in mind, the apartment features an internal space of 82.40 m², providing ample room for relaxing and entertaining. The layout includes two spacious bedrooms one bathroom and one guest w/c.

The home benefits from a central air conditioning system, underfloor heating for cozy winters, and secure entry as part of a gated complex. Residents can also enjoy a well-maintained communal swimming pool, perfect for relaxation.

Petrou Kai Pavlou is a vibrant, established area known for its blend of residential comfort and nearby amenities. You'll find supermarkets, shops, schools, cafes, and public transport all within easy reach, making daily life both convenient and enjoyable.

*Location on map is indicative.



Floor plans



Additional information

Facilities

Aircondition, Central system

Heating, Underfloor

Pool, Communal

Elevator

Landscaped garden

Solar water heater

Gated complex

Parking, Covered

Storage

Features

Ceramic tiles

Granite countertops

Thermal insulation

Electric car charger (provision)

Pressurized water system

Entrance gate, automated

Smart home automation (provision)

Contact us



Katerina Athini

✉ katerina@cyprusdomus.com

